

## Classics Custom Options



### Custom Colors

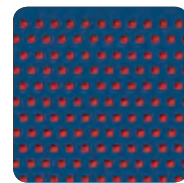
Available in a wide variety of custom colors to match your team or corporate color scheme.

### Custom Graphics

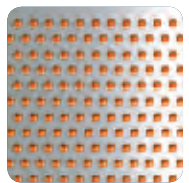
Promote your team or corporate logo with long-lasting laser cut graphics.

Contact your Rubbermaid Commercial Products Sales Representative.

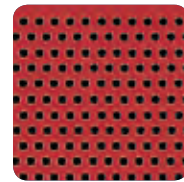
### SAMPLE COLORS & LINERS



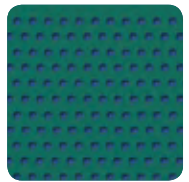
Cobalt Blue  
with Red Liner



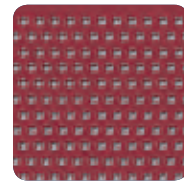
Silver Metallic  
with Orange Liner



Red with Black Liner



Empire Green  
with Blue Liner



Crimson with Gray Liner



FGS55SST  
Custom color and laser cut.

FGS55ET  
Custom color  
and laser cut.

FGS3ET  
Custom color and laser cut.

### ADDITIONAL FEATURES & OPTIONS

Contact your Rubbermaid Commercial Products Sales Representative for more information.



Optional ABS plastic lid for  
model S55.

FGABSS5



Optional recessed base for  
model S55.

FGOB55



Optional Weather Shield for  
protection from the elements.

### POWDER COATED

No.	Color	Liner	Description	Capacity (gal)	Capacity (Liters)	U.S. Dimensions	U.S. Ship Wt/Ctn	Metric Dimensions	Metric Ship Wt/Ctn
FGS3ET	<b>BK, HBZ, HGR</b>	PL	Classics Drop Top w/ Levelers	25	94.6	18" dia x 35.5" h	49.0 lb	45.7 cm dia x 90.2 cm	22.2 kg
	<b>SM</b>	PL							
FGS55ET	<b>BK</b>	PL	Classics Drop Top w/Levelers	51	193	24.5" dia x 35.5" h	73.0 lb	62.2 cm dia x 90.2 cm	33.1 kg
	<b>SM</b>	PL							

### STAINLESS STEEL WITH BLACK OR STAINLESS STEEL LIDS

No.	Color	Liner	Description	Capacity (gal)	Capacity (Liters)	U.S. Dimensions	U.S. Ship Wt/Ctn	Metric Dimensions	Metric Ship Wt/Ctn
FGS55ETWS	<b>BK</b>	PL	Classics Drop Top w/Levelers & Weather Shield	51	193	24.5" dia x 47" h	79.0 lb	62.2 cm dia x 119.4 cm	35.8 kg
FGS3SST	<b>BK</b>	PL	Classics Drop Top w/ Levelers	25	94.6	18" dia x 35.5" h	46.0 lb	45.7 cm dia x 90.2 cm	20.9 kg
	<b>SS</b>	PL							
FGS55SST	<b>BK</b>	PL	Classics Drop Top w/Levelers	51	193	24.5" dia x 35.5" h	70.0 lb	62.2 cm dia x 90.2 cm	31.8 kg
	<b>SS</b>	PL							
FGS55SSTWS	<b>BK</b>	PL	Classics Drop Top w/Levelers & Weather Shield	51	193	24.5" dia x 47" h	76.0 lb	62.2 cm dia x 119.4 cm	34.5 kg
FGOB55	<b>BK</b>	N/A	Classics Recessed Base Ring	N/A	N/A	21" dia x 2.5" h	7.0 lb	53.3 cm dia x 6.4 cm	3.2 kg

Black (BK), Hammertone Bronze (HBZ), Hammertone Charcoal (HGR), Silver Metallic (SM), Stainless Steel (SS) Plastic Liner (PL)

Custom colors & other custom options on pgs 272-277. Call Customer Service for pricing. For replacement liners, see page 135.