



# STAINLESS STEEL OPEN BASE STYLE ENCLOSED BASE WORK TABLES



Flat Top



1 1/2" Backsplash



5" Backsplash



FEATURING BOLT-ON  
STAINLESS STEEL LEG

Item #: \_\_\_\_\_ Qty #: \_\_\_\_\_  
 Model #: \_\_\_\_\_  
 Project #: \_\_\_\_\_

## 24" WIDE

Length	FLAT TOP	1 1/2" SPLASH	5" SPLASH	Wt.
36"	EB-SS-243	EF-SS-243	EK-SS-243	200 lbs.
48"	EB-SS-244	EF-SS-244	EK-SS-244	240 lbs.
60"	EB-SS-245	EF-SS-245	EK-SS-245	280 lbs.
72"	EB-SS-246	EF-SS-246	EK-SS-246	325 lbs.
84"	EB-SS-247	EF-SS-247	EK-SS-247	365 lbs.
96"	EB-SS-248	EF-SS-248	EK-SS-248	415 lbs.
108"	EB-SS-249	EF-SS-249	EK-SS-249	455 lbs.
120"	EB-SS-2410	EF-SS-2410	EK-SS-2410	490 lbs.
144"	EB-SS-2412	EF-SS-2412	EK-SS-2412	560 lbs.

## 30" WIDE

Length	FLAT TOP	1 1/2" SPLASH	5" SPLASH	Wt.
36"	EB-SS-303	EF-SS-303	EK-SS-303	225 lbs.
48"	EB-SS-304	EF-SS-304	EK-SS-304	260 lbs.
60"	EB-SS-305	EF-SS-305	EK-SS-305	300 lbs.
72"	EB-SS-306	EF-SS-306	EK-SS-306	340 lbs.
84"	EB-SS-307	EF-SS-307	EK-SS-307	380 lbs.
96"	EB-SS-308	EF-SS-308	EK-SS-308	425 lbs.
108"	EB-SS-309	EF-SS-309	EK-SS-309	465 lbs.
120"	EB-SS-3010	EF-SS-3010	EK-SS-3010	515 lbs.
144"	EB-SS-3012	EF-SS-3012	EK-SS-3012	600 lbs.

## 36" WIDE

Length	FLAT TOP	1 1/2" SPLASH	5" SPLASH	Wt.
36"	EB-SS-363	EF-SS-363	EK-SS-363	250 lbs.
48"	EB-SS-364	EF-SS-364	EK-SS-364	290 lbs.
60"	EB-SS-365	EF-SS-365	EK-SS-365	330 lbs.
72"	EB-SS-366	EF-SS-366	EK-SS-366	375 lbs.
84"	EB-SS-367	EF-SS-367	EK-SS-367	415 lbs.
96"	EB-SS-368	EF-SS-368	EK-SS-368	460 lbs.
108"	EB-SS-369	EF-SS-369	EK-SS-369	505 lbs.
120"	EB-SS-3610	EF-SS-3610	EK-SS-3610	555 lbs.
144"	EB-SS-3612	EF-SS-3612	EK-SS-3612	625 lbs.

### FEATURES:

**FLAT TOP** is furnished with a 1 5/8" sanitary rolled rim on the front and 1 5/8" square bend edges on the 2 sides and rear.

**1 1/2" SPLASH** is furnished with a 1 5/8" sanitary rolled rim on the front side and 1 5/8" square bend edges on the 2 sides and a 1 1/2" splash of single metal thickness on the rear side.

**5" SPLASH** is furnished with a 1 5/8" sanitary rolled rim on the front side and 1 5/8" square bend edges on the 2 sides and a 5" splash with a 1" return on the rear side.

Rear flush panel along the rear of the base unit.

### CONSTRUCTION:

All TIG welded. Exposed areas finished to match adjacent surfaces.

Entire Top is mechanically polished to a satin finish and is sound deadened.

Hat section secured to Top reinforces and maintains level working surface.

UNI-BODY DESIGN sides, back and fixed mid shelf (sold separately) are welded to form a single rigid structure.

Legs bolt on to table base.

### MATERIAL:

TOP is 14 gauge stainless steel type "304" series with galvanized understructure.

BODY is 18 gauge stainless steel type "430" series.

LEGS are stainless steel and include 1 1/2" adjustable hex foot.

Mid Shelves Are Available.

To Add a Fixed Mid Shelf, Add "M" After each Model Number.  
 Upgrade to Adjustable Mid Shelf. Add TA-116.



Customer Service Available To Assist You 1-800-645-3166 8:30 am - 8:00 pm E.S.T.

For Orders & Customer Service:

Email: customer@advancetabco.com or Fax: 631-242-6900

For Smart Fabrication™ Quotes:

Email: smartfab@advancetabco.com or Fax: 631-586-2933

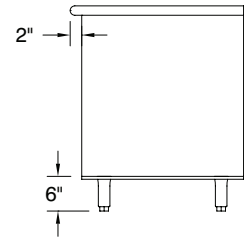
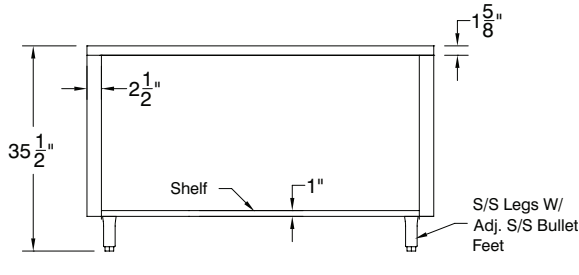
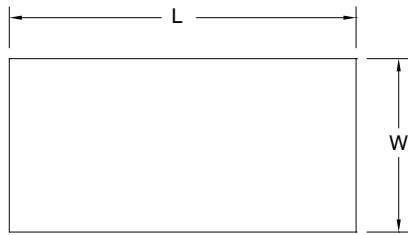
# DETAILS and SPECIFICATIONS

TOL ± .500"

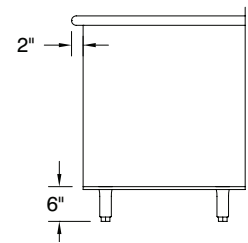
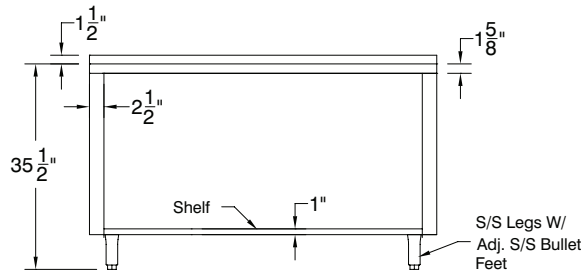
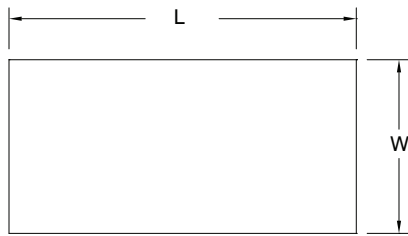
Units 7' and larger are furnished with 6 legs.

ALL DIMENSIONS ARE TYPICAL

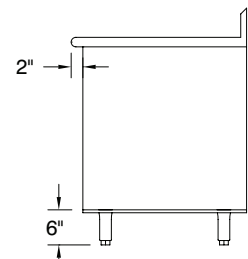
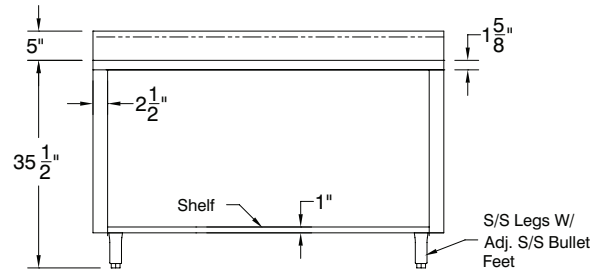
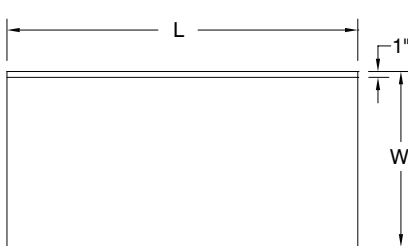
## EB-Series Flat Top



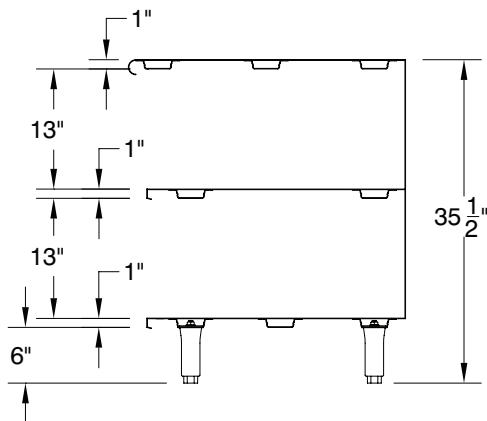
## EF-Series 1 1/2" Rear Splash



## EK-Series 5" Rear Splash



## OPTIONAL MID SHELF DETAILS



## OPTIONAL ENCLOSED BASE ACCESSORIES

- TA-20L ..... Replacement Bolt-on Leg
- TA-19L ..... Replacement Bolt-on Leg  
With Flanged Bullet Foot
- TA-255P ..... 5" Heavy Duty Polyurethane Casters  
(set of 4 - 2 w/ Brakes)
- TA-255AP.... 5" Heavy Duty Polyurethane Casters  
(set of 6 - 2 w/ Brakes)
- TA-46 ..... Door Locks
- TA-54 ..... Removable Kick Plate

## TA-116 ADJUSTABLE ENCLOSED BASE CABINET MID SHELF (Sold Separately)

*Shelves Over 36" In Length Require Multiple Sections With Center Partition.*

