



STAINLESS STEEL WOOD TOP TABLES

Item #: _____ **Qty #:** _____

Model #: _____

Project #: _____



H2S-H2G Series
with Undershelf



TH2S-TH2G Series
with Open Base



1 3/4" WOOD TOP with UNDERSHELF

Stainless Steel Base

Galvanized Base

Length	24"	30"	36"	24"	30"	36"
36"	H2S-243	H2S-303	H2S-363	H2G-243	H2G-303	H2G-363
48"	H2S-244	H2S-304	H2S-364	H2G-244	H2G-304	H2G-364
60"	H2S-245	H2S-305	H2S-365	H2G-245	H2G-305	H2G-365
72"	H2S-246	H2S-306	H2S-366	H2G-246	H2G-306	H2G-366
84"	H2S-247	H2S-307	H2S-367	H2G-247	H2G-307	H2G-367
96"	H2S-248	H2S-308	H2S-368	H2G-248	H2G-308	H2G-368

Shipping weight approximately 25 lbs. per lineal foot.

1 3/4" WOOD TOP with OPEN BASE

Stainless Steel Base

Galvanized Base

Length	24"	30"	36"	24"	30"	36"
48"	TH2S-244	TH2S-304	TH2S-364	TH2G-244	TH2G-304	TH2G-364
60"	TH2S-245	TH2S-305	TH2S-365	TH2G-245	TH2G-305	TH2G-365
72"	TH2S-246	TH2S-306	TH2S-366	TH2G-246	TH2G-306	TH2G-366
84"	TH2S-247	TH2S-307	TH2S-367	TH2G-247	TH2G-307	TH2G-367
96"	TH2S-248	TH2S-308	TH2S-368	TH2G-248	TH2G-308	TH2G-368

Shipping weight approximately 20 lbs. per lineal foot.

FEATURES & CONSTRUCTION:

Hard Wood Top.

Gussets welded to support channels.

H2S & H2G Series

Aluminum die cast "leg-to-shelf" clamp secures shelf to leg eliminating unsightly nuts and bolts. Undershelf is adjustable.

TH2S & TH2G

Front to back Stretchers are welded to legs. Left to right Stretcher bolted to legs and requires assembly.

H2S & TH2S Series

MATERIAL:

TOP: Laminated 1-3/4" Thick HARD MAPLE.

SHELF: 18 gauge stainless steel.

LEGS: 1 5/8" diameter tubular stainless steel.

Stainless steel gussets.

1" adjustable stainless steel bullet feet.

H2G & TH2G Series

MATERIAL:

TOP: Laminated 1-3/4" Thick HARD MAPLE.

SHELF: Galvanized steel.

LEGS: 1 5/8" diameter tubular galvanized steel.

Galvanized steel gussets.

1" adjustable plastic bullet feet.



Customer Service Available To Assist You **1-800-645-3166** 8:30 am - 8:00 pm E.S.T.

Email Orders To: customer@advancetabco.com. For Smart Fabrication™ Quotes, Email To: smartfab@advancetabco.com or Fax To: 631-586-2933

NEW YORK
Fax: (631) 242-6900

GEORGIA
Fax: (770) 775-5625

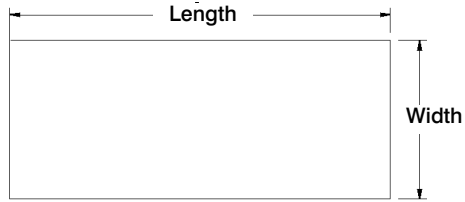
TEXAS
Fax: (972) 932-4795

NEVADA
Fax: (775) 972-1578

DETAILS and SPECIFICATIONS

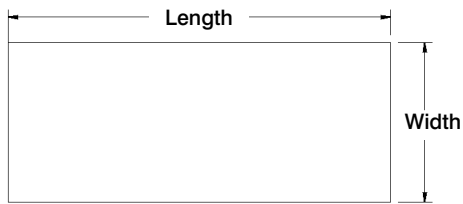
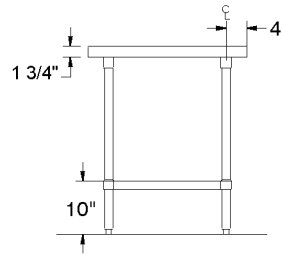
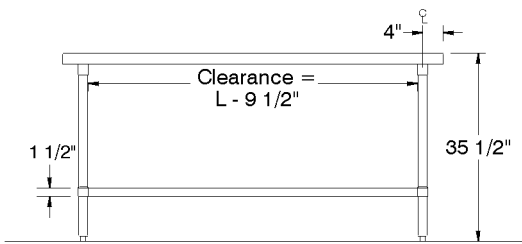
TOL \pm .500"

ALL DIMENSIONS ARE TYPICAL



H2S & H2G Series Undershelf Style

Finished size of undershelf = Length minus 5 3/4", Width minus 5 3/4"



TH2S & TH2G Series Open Base Style

Units 8 ft. and larger are furnished with six (6) legs

