



ALUMINUM  
**LUG CARTS** 

Item #: \_\_\_\_\_ Qty #: \_\_\_\_\_  
 Model #: \_\_\_\_\_  
 Project #: \_\_\_\_\_



LR4

**FEATURES:**

- Curved top design.
- Heavy duty welded construction with 6 cross supports.
- Heavy duty 5" stem bolted swivel casters.
- 1 1/2" Ribbed Angles.

**CONSTRUCTION:**

Fully welded 1" square tubing ladder assembly.

**MATERIAL:**

6063-T52 extruded aluminum angles, upright tubing, and support pieces.



LR2

MODEL #	Lug Capacity	Overall Size L x W x H	Wt.
LR6	6	19" x 26" x 69 3/4"	23 lbs.
LR4	4	19" x 26" x 52 3/4"	21 lbs.
LR2	2	19" x 26" x 31 3/4"	18 lbs.
LR1	1	15 3/4" x 23 1/2" x 18 3/4"	15 lbs.



Customer Service Available To Assist You **1-800-645-3166** 8:30 am - 8:00 pm E.S.T.

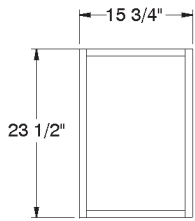
For Orders & Customer Service:  
 Email: [customer@advancetabco.com](mailto:customer@advancetabco.com) or Fax: 631-242-6900

For Smart Fabrication™ Quotes:  
 Email: [smartfab@advancetabco.com](mailto:smartfab@advancetabco.com) or Fax: 631-586-2933

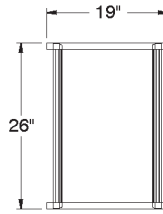
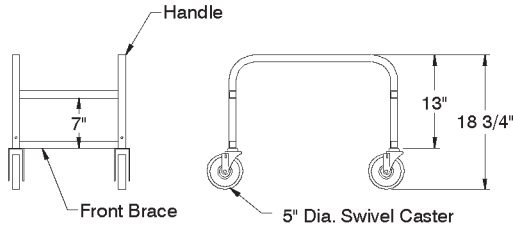
# DIMENSIONS and SPECIFICATIONS

TOL ± .500"

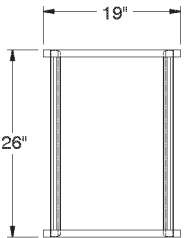
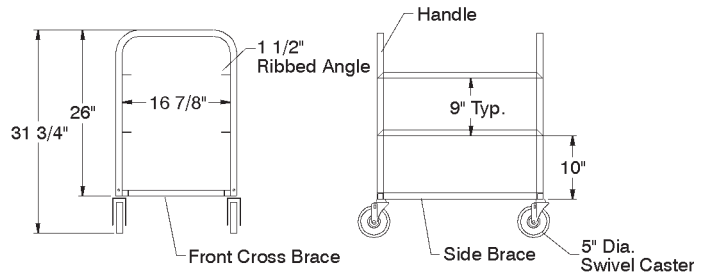
ALL DIMENSIONS ARE TYPICAL



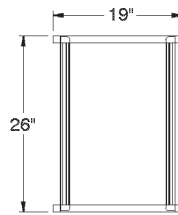
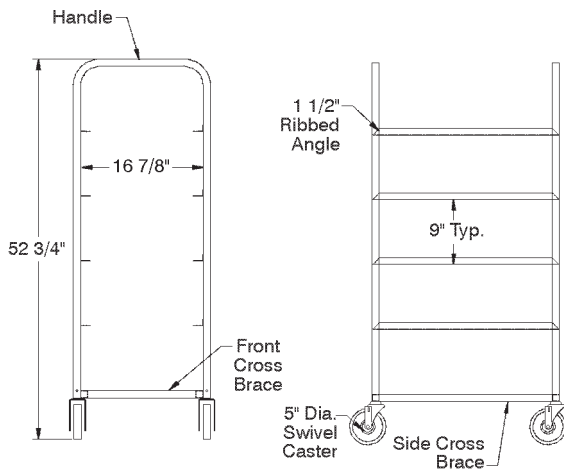
LR1



LR2



LR4



LR6

