

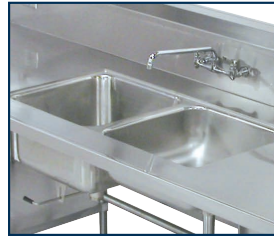


Welded Sinks Into Table Top NSF

Deep Drawn & Fabricated Sink Bowls



Flat Top
w/ K-50
Deck Mount
Faucet Shown



10" Backsplash
w/ K-1
Splash Mount
Faucet Shown

Item #: _____ Qty #: _____
 Model #: _____
 Project #: _____

FEATURES:

Sinks welded into table top.
 Includes K-6 basket drain(s)

All faucets included meet federal lead free standards.

Flat Top, 1", 1-1/2" & 5" backsplash tables include deck mounted faucet.

- Single Sink Bowls provided with K-50 swing spout faucet
- Double Sink Bowls provided with K-53 swing spout faucet

10" backsplash tables include splash mounted faucet

- Single and double sink bowls provided with K-1 swing spout faucet

OPTIONS:

TA-11Z - Allow 5" backsplash accommodate splash mounted faucet

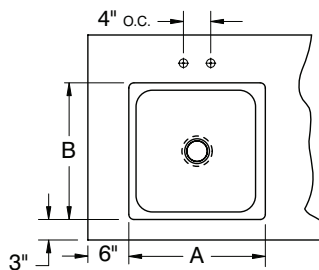
Single Bowl	Double Bowl	Size
Model#	Model#	A B
DEEP DRAWN SINK BOWLS		
TA-11A**	TA-11A-2**	16" x 20" x 8"
TA-11B**	TA-11B-2**	16" x 20" x 12"
TA-11C	TA-11C-2	20" x 20" x 8"
TA-11D*	TA-11D-2*	20" x 20" x 12"
TA-11E*	TA-11E-2*	24" x 24" x 12"
TA-11F	TA-11F-2†	10" x 14" x 10"
TA-11G*	TA-11G-2*	28" x 20" x 12"
TA-11J	TA-11J-2	14" x 16" x 12"
TA-11L	TA-11L-2	18" x 24" x 12"
FABRICATED SINK BOWLS		
TA-11N	TA-11N-2	18" x 18" x 14"
TA-11P	TA-11P-2	20" x 24" x 14"

* Only Installed In Tables 30" Wide or Wider

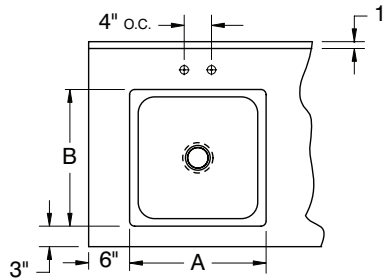
** Bowls Are Turned In 24" Wide Tables (20" X 16" X 8")

† K-50 Swing Spout Faucet (Double Bowl)

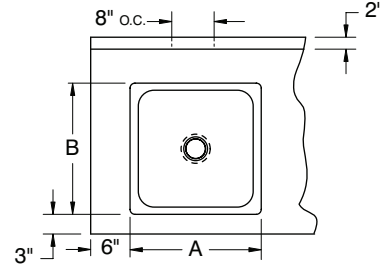
FLAT TOP, 1" or 1-1/2" REAR SPLASH
 (Deep Drawn Sink Bowl Shown)



5" REAR SPLASH with 1" RETURN
 (Deep Drawn Sink Bowl Shown)



10" REAR SPLASH with 2" RETURN
 (Deep Drawn Sink Bowl Shown)



MODIFICATIONS & ACCESSORIES

K-2A	Poly-Vance Sink Cover 10"x14"
K-2B	Poly-Vance Sink Cover 14"x16"
K-2C	Poly-Vance Sink Cover 16"x20"
K-2D	Poly-Vance Sink Cover 18"x24"
K-2E	Poly-Vance Sink Cover 20"x20"
K-2F	Poly-Vance Sink Cover 24"x24"
K-4	Lever Drain Bracket
K-5	Lever Drain
K-12	Deck Mounted Soap Dispenser
K-15	Lever Drain with Overflow
K-50	Deck Mounted 4" O.C. 8" Swing Spout Faucet
K-500MIT	Omit Swing Spout Faucet
K-52	Deck Mounted 4" O.C. 3-1/2" Gooseneck Faucet
K-520MIT	Omit Swing Spout Faucet
K-53	Deck Mounted 4" O.C. 12" Gooseneck Faucet
K-54	8-1/4" High Water Filler Faucet

K-54A	12" High Water Filler Faucet
K-55	8 1/2" Spout 4" O.C. Deck Mt. Gooseneck Faucet
K-56	5" NSF Partition
K-60	4" O.C. Splash Mounted Gooseneck Faucet
K-62	X.H.D. 4" O.C. Deck Mounted Gooseneck Faucet
K-105	14" Splash Mounted 8" O.C. Faucet
K-112	Extra Heavy Duty 12" Splash Mounted Faucet
K-316-LU	Wrist Handles for 4" O.C. Faucets
K-452	6"x9" Control Bracket
K-453	14"x16" Control Bracket
K-455A	Stainless Steel Sink Cover 10"x14"
K-455B	Stainless Steel Sink Cover 14"x16"
K-455C	Stainless Steel Sink Cover 16"x20"
K-455D	Stainless Steel Sink Cover 18"x24"
K-455E	Stainless Steel Sink Cover 20"x20"
K-455F	Stainless Steel Sink Cover 24"x24"

K-455G	Stainless Steel Sink Cover 20"x28"
K-460	Installation of Disposal Cone with 6"x9" Control Bracket
K-461	Installation of Collar with 6"x9" Control Bracket
K-470	14" deep Bowls
K-472	Faucet Hole Revision
TA-11Z	Return Only (5" Splash Tables Require 2" Return For Splash Mounted Faucet)
TA-31	5" Side Splash
TA-32	10" Side Splash
TA-34	Top Cut-Out

For More Faucet Options & Faucet Specs, See Faucet Specifications in Section G



Customer Service Available To Assist You **1-800-645-3166** 8:30 am - 8:00 pm E.S.T.

For Orders & Customer Service:

Email: customer@advancetabco.com or Fax: 631-242-6900

For Smart Fabrication™ Quotes:

Email: smartfab@advancetabco.com or Fax: 631-586-2933