

# RWS1 Warmer

7.5" x 9.3" x 8.3"  
(19.1cm x 23.6cm x 21.1cm)

•  
\*Feature points are currently unavailable.\*



Agency:



## Specifications

**Product #:** 12203.0010

**Finish:** Stainless

**Legs:** 4" Black Legs

## Additional Features

## Electrical & Capacity

Volts	Amps	Watts	Cord Attached	Plug Type	8oz cups/hr 236ml cups/hr	Input H <sup>2</sup> O Temp.	Phase	# Wires plus Ground	Hertz
120	1	100	Yes	NEMA 5-15P	-	60°F (15.5°C)	1	2	60

## Plumbing Requirements

PSI	kPa	Fitting Supplied	Water Flow Required (GPM)
-	-	-	-

## CAD Drawings

2D	Revit	KLC
●		



BUNN® reserves the right to change specifications and product design without notice. Such revisions do not entitle the buyer to corresponding changes, improvements, additions or replacements for previously purchased equipment. For most current specifications and other info visit [bunn.com](http://bunn.com).

Created on:  
08/15/2018

Unit			Shipping					
	Width	Height	Depth	Width	Height	Depth	Weight	Volume
English	8.3 in.	7.5 in.	9.3 in.	11.4 in.	9.6 in.	12.9 in.	6.500 lbs	0.817 ft <sup>3</sup>
Metric	21.1 cm	19.1 cm	23.6 cm	29.0 cm	24.4 cm	32.8 cm	2.948 kgs	0.023 m <sup>3</sup>



BUNN® reserves the right to change specifications and product design without notice. Such revisions do not entitle the buyer to corresponding changes, improvements, additions or replacements for previously purchased equipment. For most current specifications and other info visit [bunn.com](http://bunn.com).

Created on:  
08/15/2018

# Related Products & Accessories:RWS1 Warmer(12203.0010)



COVER, DRIP PAN

Product #: 03229.0000



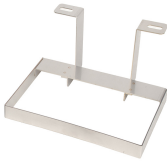
DRIP TRAY KIT,RWS1

Product #: 20213.0103



DRIP TRAY

Product #: 20213.0200



BRACKET WLDMT, DRIP TRAY RWS1

Product #: 20213.0301



BUNN® reserves the right to change specifications and product design without notice. Such revisions do not entitle the buyer to corresponding changes, improvements, additions or replacements for previously purchased equipment. For most current specifications and other info visit [bunn.com](http://bunn.com).

Created on:  
08/15/2018

## Serving & Holding Options: RWS1 Warmer(12203.0010)



1.5GPR-FF, TOP HNDL

Product #:20950.0004



BUNN® reserves the right to change specifications and product design without notice. Such revisions do not entitle the buyer to corresponding changes, improvements, additions or replacements for previously purchased equipment. For most current specifications and other info visit [bunn.com](http://bunn.com).

Created on:  
08/15/2018