

# SINGLE GPR 120/240V

31.3" x 24.3" x 9.4"  
(79.5cm x 61.7cm x 23.9cm)

- Each 1.5GPR portable server (included) has a Safety-Fresh® brew-through lid with vapor seal and spill protection
- Adjustable bypass ensures perfect coffee regardless of batch size
- Brews 1/2, 1 or 1 1/2gal (1.9, 3.8 or 5.7L) batches
- SplashGard® funnel deflects hot liquids away from the hand



Servers and airpots sold separately

Agency:



## Specifications

**Product #:** 23050.0011

**Faucet:** Upper

**Water Access:** Plumbed

**Interface:** Cabled

**Finish:** Stainless

**Funnel:** Stainless Steel

## Additional Features

## Electrical & Capacity

Volts	Amps	Watts	Cord Attached	Plug Type	8oz cups/hr 236ml cups/hr	Input H <sup>2</sup> O Temp.	Phase	# Wires plus Ground	Hertz
120/240	17.9	4300	No	-	187	60°F (15.5°C)	1	3	60

## Plumbing Requirements

PSI	kPa	Fitting Supplied	Water Flow Required (GPM)
20-90	138-621	1/4" Male Flare Fitting	-

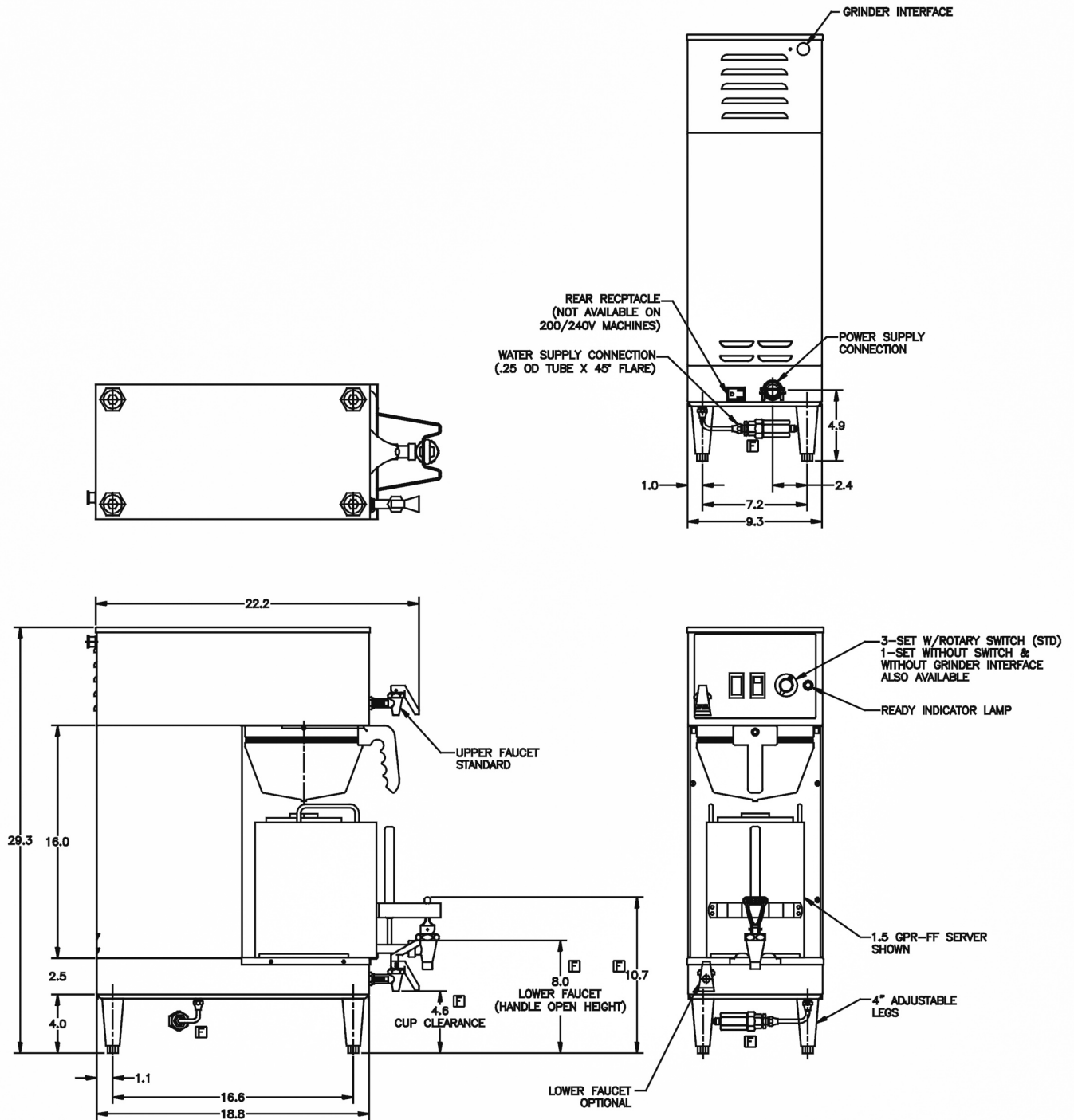
## CAD Drawings

2D	Revit	KLC
●		



BUNN® reserves the right to change specifications and product design without notice. Such revisions do not entitle the buyer to corresponding changes, improvements, additions or replacements for previously purchased equipment. For most current specifications and other info visit [bunn.com](http://bunn.com).

Created on:  
09/13/2017



Unit			Shipping					
	Width	Height	Depth	Width	Height	Depth	Weight	Volume
English	9.4 in.	31.3 in.	24.3 in.	12.6 in.	32.3 in.	29.9 in.	57.550 lbs	6.450 ft <sup>3</sup>
Metric	23.9 cm	79.5 cm	61.7 cm	32.0 cm	82.0 cm	75.9 cm	26.105 kgs	0.183 m <sup>3</sup>



BUNN® reserves the right to change specifications and product design without notice. Such revisions do not entitle the buyer to corresponding changes, improvements, additions or replacements for previously purchased equipment. For most current specifications and other info visit [bunn.com](http://bunn.com).

Created on:  
09/13/2017

# Related Products & Accessories: SINGLE GPR 120/240V(23050.0011)



RWS1, 120V

Product #: 12203.0010



PARRILLA

Product #: 12203.0010



RWS1, 120V-SATIN NKL  
LEGS

Product #: 12203.0014



FILTERS, GOURMET 500  
500/1 50/CL

Product #: 20138.1000



PAPEL FILTRANTE

Product #: 20138.1000



FUNNEL ASSY, SST  
(DUAL/SGL)

Product #: 20201.1201



EMBUDOS

Product #: 20201.1201



DRIP TRAY KIT, SINGLE  
STD & SH

Product #: 26830.0000



CHAROLA CON  
ACCESORIOS

Product #: 26830.0000



1SH STAND, 120V

Product #: 27825.0000



BASE

Product #: 27825.0000



1SH STAND, 120V BLK

Product #: 27825.0003



WATER FILTER,  
EQHP-10L

Product #: 39000.0001



WATER FILTER,  
EQHP-10

Product #: 39000.0004



BUNN® reserves the right to change specifications and product design without notice. Such revisions do not entitle the buyer to corresponding changes, improvements, additions or replacements for previously purchased equipment. For most current specifications and other info visit [bunn.com](http://bunn.com).

Created on:  
09/13/2017

## Serving & Holding Options: SINGLE GPR 120/240V(23050.0011)



RWS1, 120V

Product #:12203.0010



PARRILLA

Product #:12203.0010



RWS1, 120V-SATIN NKL  
LEGS

Product #:12203.0014



1.5GPR-FF, TOP HNDL

Product #:20950.0004



CONTENEDOR

Product #:20950.0004



BUNN® reserves the right to change specifications and product design without notice. Such revisions do not entitle the buyer to corresponding changes, improvements, additions or replacements for previously purchased equipment. For most current specifications and other info visit [bunn.com](http://bunn.com).

Created on:  
09/13/2017