

## Portion Control Grinder with 2 Hoppers

### Features

#### Portion Control Grinder

- Two hoppers hold 6 lbs. (2.7 kg) each of regular and decaf or specialty beans.
- Selected models interface to compatible BUNN brewers.
- Portion controlled for the right amount of coffee every time.
- Precision burrs for consistent, commercial-quality grind.
- The G92T HD accommodates larger brew funnels.
- Multi-set available.
- International electrical configurations available.



#### Model G9-2 HD

(funnel sold separately)

Dimensions: 25"H x 8"W x 17.8"D  
(63.5cm H x 20.3cm W x 45.2cm D)



#### Model G9-2T DBC

(funnel sold separately)

Dimensions: 25"H x 8"W x 17.8"D  
(63.5cm H x 20.3cm W x 45.2cm D)

#### BrewWISE® DBC Portion Control Grinder

- Two hoppers hold 6 lbs. (2.7 kg) each of regular and decaf or specialty beans.
- Stores individual coffee grind profiles.
- Operate any combination of equipment error-free with wireless brewer-grinder interface via Smart Funnel® and Dual Soft Heat® DBC brewer.
- Portion controlled for the right amount of coffee every time with 3 batch sizes per hopper.

For current specification sheets and other information, go to [www.bunn.com](http://www.bunn.com).

### Related Products

#### Precision Burrs

All BUNN grinders use precision burrs to cut (not crush) the coffee beans and deliver consistent grind distribution. BUNN burrs are rated at a Rockwell hardness of 66C, resulting in an exceptionally long burr life.



Model	Agency Listing
G9-2 HD	UL (ETL)
G9-2T HD	UL (ETL)
G9-2T DBC	UL (ETL)

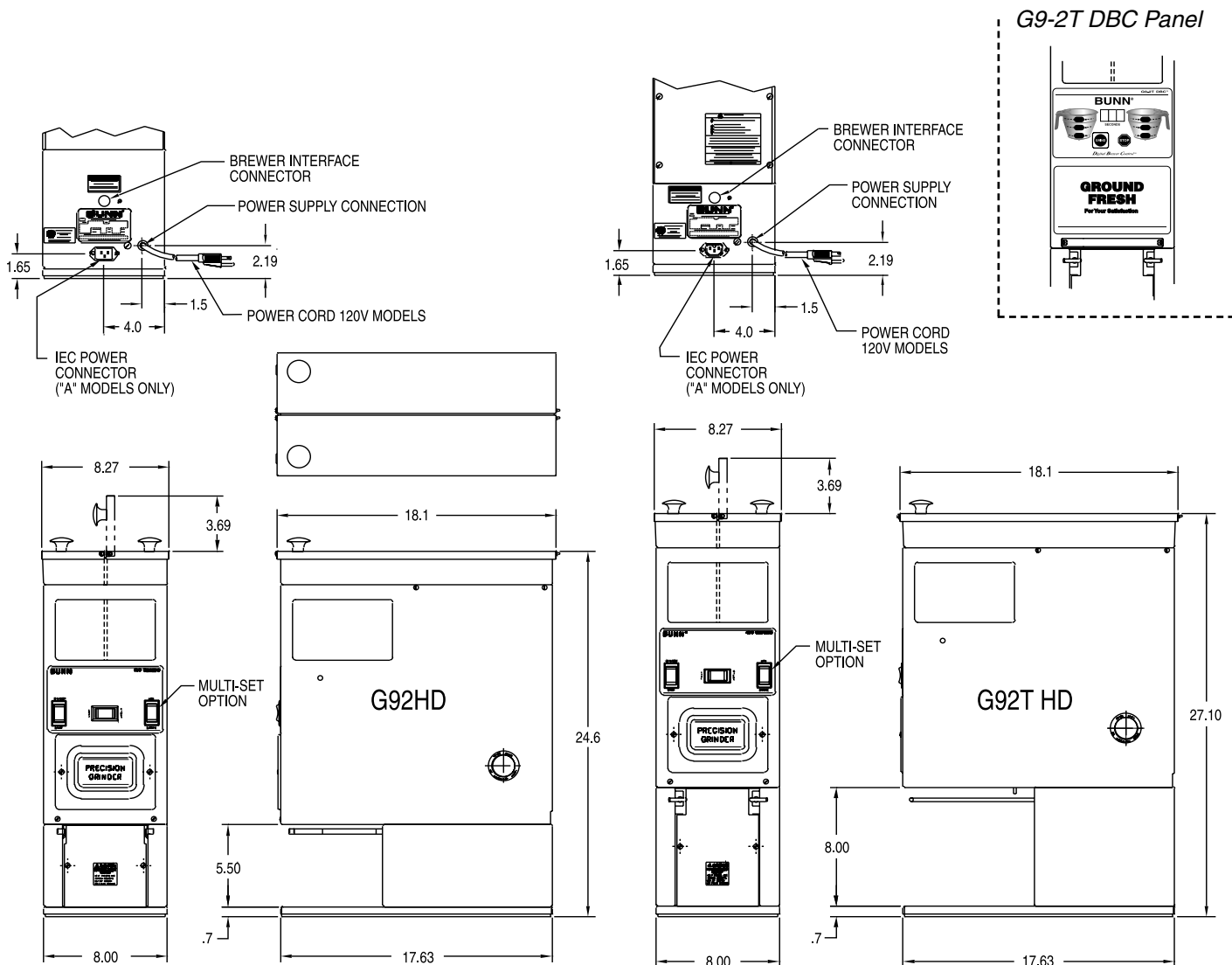
## Dimensions & Specifications

Model	Product #	Volts	Amps	Capacity	Cu. Ft.	Shipping Weight	Cord Attached
G9-2 HD†	24250.0000	120	9.4	6 lbs. per hopper	6 ft <sup>3</sup>	67 lbs.	Yes <sup>Δ</sup>
G9-2 HD-S*	24250.0006	120	9.4	6 lbs. per hopper	6 ft <sup>3</sup>	66 lbs.	Yes <sup>Δ</sup>
G9-2T HD†	24250.0021	120	9.4	6 lbs. per hopper	6 ft <sup>3</sup>	68 lbs.	Yes <sup>Δ</sup>
G9-2T HD†f	24250.0009	120	9.4	6 lbs. per hopper	6 ft <sup>3</sup>	67 lbs.	Yes <sup>Δ</sup>
G9-2T DBC**	33700.0000	120	9.4	6 lbs. per hopper	6 ft <sup>3</sup>	67 lbs.	Yes <sup>Δ</sup>

\*Analog †Brewer interface †Black finish \*\*Wireless interface <sup>Δ</sup>Power cord (NEMA 5-15P) 15 Amp-120V machine only.

G9-2T-HD accepts large brew funnels for System III, Dual and other large BUNN® Brewers.

Electrical: 2-wires plus ground service rated 120V, 60Hz, circuit required, ¾HP motor.



Bunn-O-Matic Corporation - 1400 Stevenson Drive Springfield, Illinois 62703 • 800-637-8606 • 217-529-6601 • Fax 217-529-6644 • www.bunn.com

BUNN® practices continuous product research and improvement. We reserve the right to change specifications and product design without notice. Such revisions do not entitle the buyer to corresponding changes, improvements, additions or replacements for previously purchased equipment.

All dimensions shown in inches. Bunn-O-Matic Corporation owns all copyrights relating to materials in this publication. Please contact BUNN to request permission to reproduce any portion of this publication.