

BUNN®

Single Soft Heat® Brewer with Docking System

ITEM#

PROJECT

DATE



Model Single SH with 1.5 gallon SH Server

(server sold separately)

Dimensions: 35.8" H x 9.3" W x 20.0" D
(90.9cm H x 23.6cm W x 50.8cm D)

Features

Coffee brewers with portable servers

- Brews 5.1 to 11.4 gallons (19.3 to 43.2 litres) of perfect coffee per hour.
- Brews ½, 1, or 1½ gallon (1.9, 3.8, 5.7 litres) batches.
- Patented server heat control automatically shuts off once target temperature is reached. Can be set to 175°-190°F (79.4°-87.8°C).
- Electronic grinder interface communicates to grinder on exact amount of coffee for selected brew batch size.
- Remote 1 or 2 server docking stations for additional satellite coffee serving.
- Safety-Fresh® patented brew-through lid with vapor seal and spill prevention.
- Variable batch selector knob lets you brew large batches or small servings.
- International electrical configurations available.

For current specification sheets and other information, go to www.bunn.com.

Related Products

Easy Clear® EQHP-10
Product No. : 39000.0004



Easy Clear® EQHP-10L
Product No. : 39000.0001

Single/Dual Filter Pack
Product No. : 20138.0000
Packed per case: 500
Dimensions:
5¼" Base x 4¼" Sidewall
13.3 cm Base x 10.8 cm Sidewall

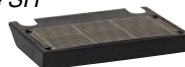


SH Server
Product No.: 27850.0001



1SH Stand
Product No.: 27825.0000

One Position Drip Tray
For use with Single/Single SH
Product No. : 26830.0000



One Position Drip Tray
For use with RWS1
Product No. : 20213.0103

Model

Single SH

Agency Listing



Dimensions & Specifications

Model	Product #	Volts	Amps	Tank Heater Watts	Total Watts	Capacity	Cu. Ft.	Shipping Weight	Cord Attached
Single SH Brewer	27800.0001	120/208	18.3	3700	3800	10.6 gal./hr.	7.8	61 lbs.	No
Single SH Brewer	27800.0002	120/240	19.1	4000	4300	11.4 gal./hr.	7.9	59 lbs.	No
Single SH Brewer	27800.0009	120	17.5	1800	2100	5.1 gal./hr.	9.3	57 lbs.	No
SH Server(1.5 gal.)	27850.0001	n/a	n/a	n/a	n/a	1½ gal.	2.4	17 lbs.	No
SH Server*(1.5 gal.)	27850.0004	n/a	n/a	n/a	n/a	1½ gal.	2.4	18 lbs.	No
SH Server*(1.5 gal.)	27850.0008	n/a	n/a	n/a	n/a	1½ gal.	2.4	18 lbs.	No
1SH Stand	27825.0000	120	.8	n/a	90	1 SH Server	1.2	13 lbs.	Yes
1SH Stand*	27825.0004	120	.8	n/a	90	1 SH Server	1.2	13 lbs.	Yes
2SH Stand	27875.0000	120	1.5	n/a	180	2 SH Servers	2.1	22 lbs.	Yes
2SH Stand*	27875.0003	120	1.5	n/a	180	2 SH Servers	2.1	22 lbs.	Yes

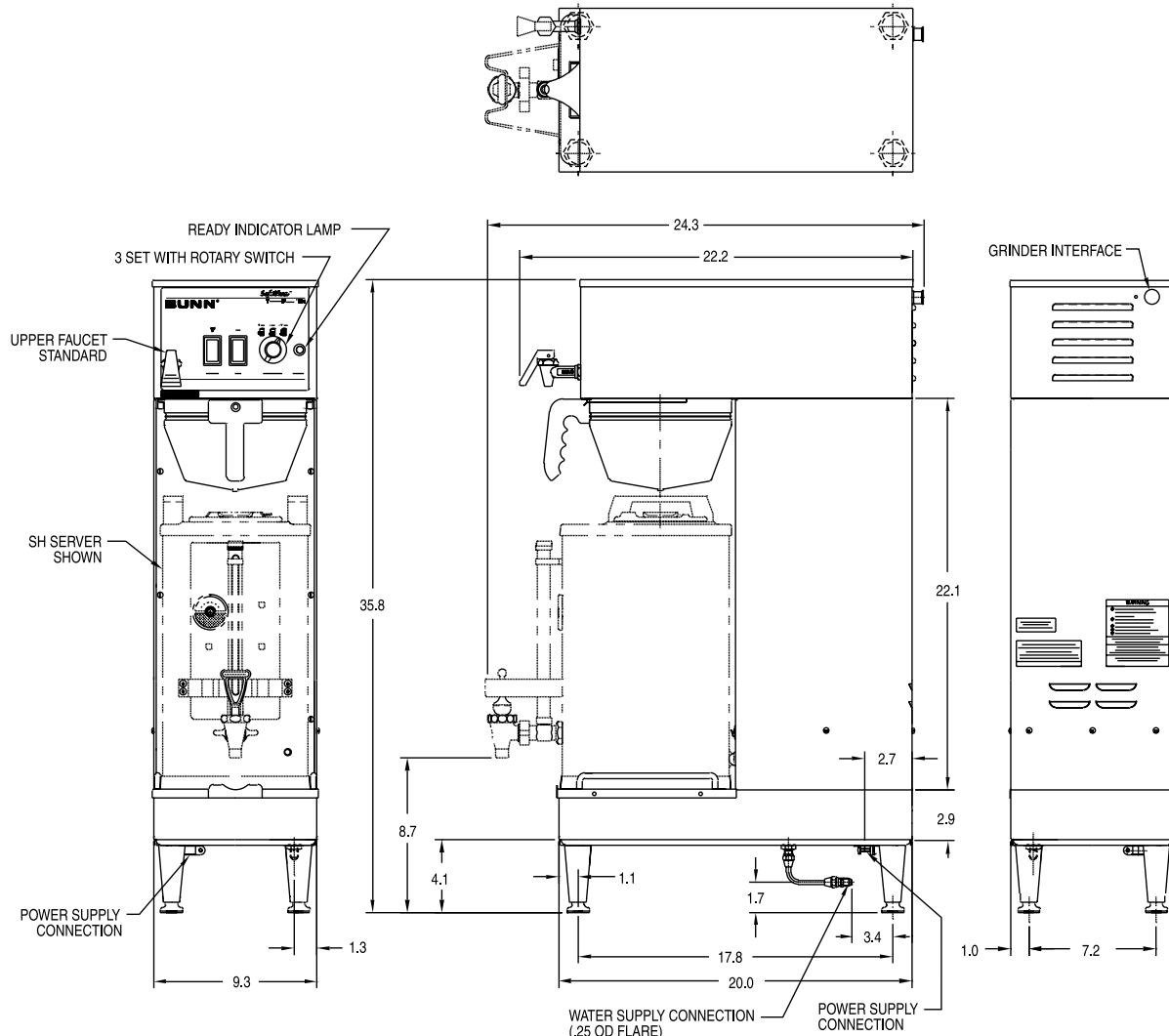
*Models have black decor. Note: Soft Heat Brewers and Servers are boxed and shipped separately.

Brewing capacity: based upon incoming water temp of 60°F (140°F rise).

Models listed as 120/208V or 120/240V must be connected to 208V or 240V electrical service respectively. Please refer to the installation manual.

Electrical: Brewer is 3-wires plus ground service rated 120/208V or 120/240V, single phase, 60Hz.

Plumbing: 20-90 psi (138-621 kPa). Machine supplied with ¼" male fitting.



Bunn-O-Matic® Corporation - 1400 Stevenson Drive Springfield, Illinois 62703 • 800-637-8606 • 217-529-6601 • Fax 217-529-6644 • www.bunn.com

BUNN® practices continuous product research and improvement. We reserve the right to change specifications and product design without notice. Such revisions do not entitle the buyer to corresponding changes, improvements, additions or replacements for previously purchased equipment.

All dimensions shown in inches. Bunn-O-Matic Corporation owns all copyrights relating to materials in this publication. Please contact BUNN to request permission to reproduce any portion of this publication.