

DUAL GPR DBC w/Lwr Fct & Fnl Lock

29.3" x 20.0" x 18.0"
(74.4cm x 50.8cm x 45.7cm)



 Servers and airpots sold separately

- Stores individual coffee recipes so operator can easily brew many varieties
- Coffee extraction controlled with pre-infusion and pulse-brew, digital temperature control and large sprayhead; coffee strength controlled with variable by-pass
- Operate any combination of BrewWISE equipment error-free with wireless brewer-grinder interface through the Smart Funnel
- Programmable freshness indication; message on display alerts when freshness timer expires and when warmers will automatically shut off
- Programmable warmer control; ability to program three time periods with distinct warmer output for each; default settings when this feature is activated is 1 hour at 100% power (100 watts) followed by 1 hour at 70% followed by 1 hour at 40%
- Energy Saver Mode reduces tank temperature during idle periods
- Each 1.5GPR portable server (included) has a Safety-Fresh® brew-through lid with vapor seal and spill protection
- Brews 1/2, 1 or 1 1/2gal (1.9, 3.8 or 5.7L) batches
- Create coffee recipe cards with BrewWISE recipe writer on your PC
- SplashGard® funnels deflect hot liquids away from the hand
- Energy saver mode reduces tank temperature during idle periods
- Funnel locks help improve safety

Agency:



Specifications

Product #: 35900.0010

Faucet: Lower

Water Access: Plumbed

Interface: Wireless

Finish: Stainless

Funnel: Smart Funnel

Additional Features

BrewWISE

Electrical & Capacity

| Volts | Amps | Watts | Cord Attached | Plug Type | 8oz cups/hr 236ml cups/hr | Input H ₂ O Temp. | Phase | # Wires plus Ground | Hertz |
|-------------|---------|-----------|---------------|-----------|------------------------------|---------------------------------|-------|------------------------|-------|
| 120/208-240 | 25.4-29 | 5158-6800 | No | - | - | 60°F (15.5°C) | 1 | 3 | 60 |

Plumbing Requirements

| PSI | kPa | Fitting Supplied | Water Flow Required (GPM) |
|-------|---------|-------------------------|---------------------------|
| 20-90 | 138-621 | 3/8" Male Flare Fitting | - |

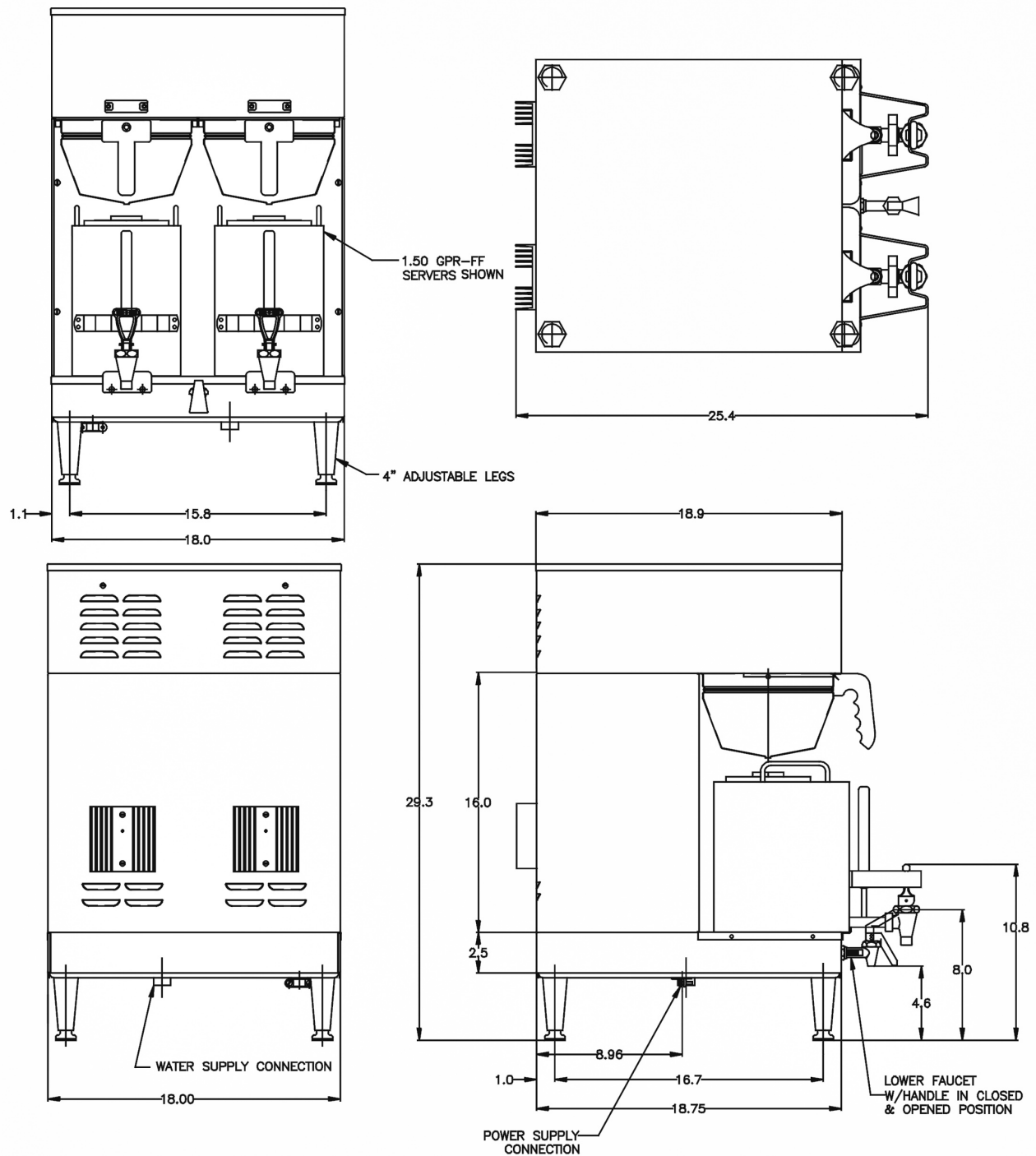
CAD Drawings

| 2D | Revit | KLC |
|----|-------|-----|
| ● | | |



BUNN® reserves the right to change specifications and product design without notice. Such revisions do not entitle the buyer to corresponding changes, improvements, additions or replacements for previously purchased equipment. For most current specifications and other info visit bunn.com.

Created on:
09/13/2017



| | Unit | | | Shipping | | | | |
|---------|----------|----------|----------|----------|--------|-------|------------|------------------------|
| | Width | Height | Depth | Width | Height | Depth | Weight | Volume |
| English | 18.0 in. | 29.3 in. | 20.0 in. | - | - | - | 96.550 lbs | 12.760 ft ³ |
| Metric | 45.7 cm | 74.4 cm | 50.8 cm | - | - | - | 43.795 kgs | 0.361 m ³ |



BUNN® reserves the right to change specifications and product design without notice. Such revisions do not entitle the buyer to corresponding changes, improvements, additions or replacements for previously purchased equipment. For most current specifications and other info visit bunn.com.

Created on:
09/13/2017

Related Products & Accessories: DUAL GPR DBC w/Lwr Fct & Fnl Lock(35900.0010)



RWS1, 120V

Product #: 12203.0010



PARRILLA

Product #: 12203.0010



RWS1, 120V-SATIN NKL
LEGS

Product #: 12203.0014



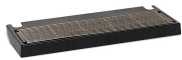
FILTERS, GOURMET 500
500/1 50/CL

Product #: 20138.1000



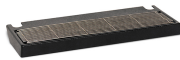
PAPEL FILTRANTE

Product #: 20138.1000



DRIP TRAY KIT, DUAL &
SH

Product #: 27150.0000



CHAROLA CON
ACCESORIOS

Product #: 27150.0000



G9-2T DBC

Product #: 33700.0000



MOLINO

Product #: 33700.0000



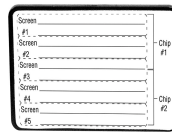
BREWWISE RECIPE
WRITER

Product #: 34444.0000



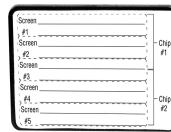
CARD ASSY, RECIPE
TRANSFER(BRW)

Product #: 34447.0000



CARD ASSY,
TRANSFER-AD (BRW)

Product #: 34448.0000



TARJETA

Product #: 34448.0000



WATER FILTER,
EQHP-25L

Product #: 39000.0002



WATER FILTER,
EQHP-25

Product #: 39000.0005



BUNN® reserves the right to change specifications and product design without notice. Such revisions do not entitle the buyer to corresponding changes, improvements, additions or replacements for previously purchased equipment. For most current specifications and other info visit bunn.com.

Created on:
09/13/2017

Serving & Holding Options: DUAL GPR DBC w/Lwr Fct & Fnl Lock(35900.0010)



RWS1, 120V

Product #:12203.0010



PARRILLA

Product #:12203.0010



RWS1, 120V-SATIN NKL
LEGS

Product #:12203.0014



1.5GPR-FF, TOP HNDL

Product #:20950.0004



CONTENEDOR

Product #:20950.0004



BUNN® reserves the right to change specifications and product design without notice. Such revisions do not entitle the buyer to corresponding changes, improvements, additions or replacements for previously purchased equipment. For most current specifications and other info visit bunn.com.

Created on:
09/13/2017