

# ICB-DBC-TWIN TALL

34.4" x 22.6" x 20.1"  
(87.4cm x 57.4cm x 51.1cm)



- Brews into 1gal to 1.5gal (3.8 to 5.7L) ThermoFresh® servers with base for easy transport of coffee to other locations
- Each side has 3 brew buttons, allowing for 3 separate brewing profiles. Two programmable batch switches allow full and half batch brewing.
- BrewWISE® intelligence with pre-infusion and pulse brew for maximum flavor extraction
- Compatible with BUNNlink®
- Digital display in English/Spanish for easier programming and control. Advertising messages and machine status also displayed. Display capable of showing English or Metric measurements.
- Easy pulse display allows for simplified programming of pulse routine
- Energy-saver mode reduces tank temperature during idle periods
- Hot water faucet
- Large 5.6gal (21.2L) tank provides back-to-back brewing capacity at 120/208-240V applications

Agency:



## Specifications

**Product #:** 37600.0011

**Water Access:** Plumbed

**Finish:** Stainless

**Funnel:** Smart Funnel

**Faucet:** Side

## Additional Features

BrewWISE

## Electrical & Capacity

| Volts   | Amps | Watts | Cord Attached | Plug Type | 8oz cups/hr<br>236ml cups/hr | Input H <sub>2</sub> O Temp. | Phase | # Wires plus Ground | Hertz |
|---------|------|-------|---------------|-----------|------------------------------|------------------------------|-------|---------------------|-------|
| 120/240 | 25   | 6000  | Yes/          | -         | 280                          | 60°F (15.5°C)                | 1     | 3                   | 60    |

## Plumbing Requirements

| PSI   | kPa     | Fitting Supplied        | Water Flow Required (GPM) |
|-------|---------|-------------------------|---------------------------|
| 20-90 | 138-621 | 3/8" Male Flare Fitting | -                         |

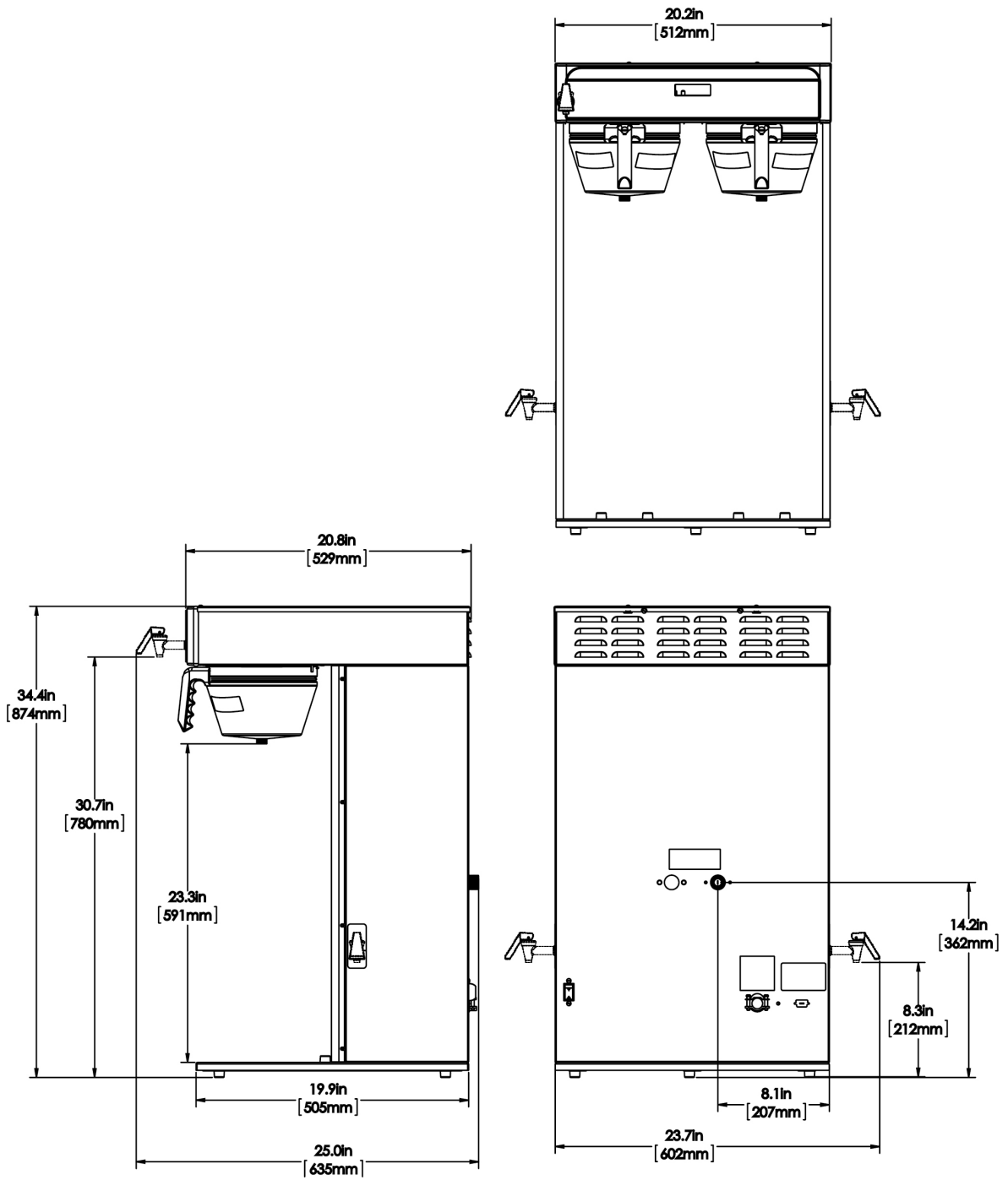
## CAD Drawings

| 2D | Revit | KLC |
|----|-------|-----|
| ●  |       |     |



BUNN® reserves the right to change specifications and product design without notice. Such revisions do not entitle the buyer to corresponding changes, improvements, additions or replacements for previously purchased equipment. For most current specifications and other info visit [bunn.com](http://bunn.com).

Created on:  
06/27/2018



|         | Unit     |          |          | Shipping |        |       |            |        |
|---------|----------|----------|----------|----------|--------|-------|------------|--------|
|         | Width    | Height   | Depth    | Width    | Height | Depth | Weight     | Volume |
| English | 20.1 in. | 34.4 in. | 22.6 in. | - in.    | - in.  | - in. | 78.460 lbs | -      |
| Metric  | 51.1 cm  | 87.4 cm  | 57.4 cm  | - cm     | - cm   | - cm  | 35.589 kgs | -      |



BUNN® reserves the right to change specifications and product design without notice. Such revisions do not entitle the buyer to corresponding changes, improvements, additions or replacements for previously purchased equipment. For most current specifications and other info visit [bunn.com](http://bunn.com).

Created on:  
06/27/2018

Related Products & Accessories: ICB-DBC-TWIN TALL(37600.0011)



FILTERS, GOURMET 500  
500/1 50/CL

Product #: 20138.1000



WATER FILTER,  
EQHP-10L

Product #: 39000.0001



WATER FILTER,  
EQHP-10

Product #: 39000.0004



BUNN® reserves the right to change specifications and product design without notice. Such revisions do not entitle the buyer to corresponding changes, improvements, additions or replacements for previously purchased equipment. For most current specifications and other info visit [bunn.com](http://bunn.com).

Created on:  
06/27/2018

# Serving & Holding Options: ICB-DBC-TWIN TALL(37600.0011)



TF SERVER, DSG2  
1G/3.8L

Product #:42700.0000



TF SERVER, DSG2  
1G/3.8L BLK

Product #:42700.0001



TF SERVER, DSG2 1G  
CD

Product #:42700.0003



TF SERVER, DSG2 1G  
BLK CD

Product #:42700.0004



TF SERVER, DSG2 1.5G  
SST

Product #:42750.0000



TF SERVER, DSG2 1.5G  
BLK

Product #:42750.0001



TF SERVER, DSG2 1.5G  
CD

Product #:42750.0003



TF SERVER, DSG2 1.5G  
BLK CD

Product #:42750.0010



TF SERVER, 1G/3.8L  
MECH

Product #:44000.0000



TF SERVER, 1G/3.8L  
MECH BLK

Product #:44000.0001



TF SERVER, 1.5G/5.7L  
MECH

Product #:44050.0000



TF SERVER, 1.5G/5.7L  
MECH BLK

Product #:44050.0001



BUNN® reserves the right to change specifications and product design without notice. Such revisions do not entitle the buyer to corresponding changes, improvements, additions or replacements for previously purchased equipment. For most current specifications and other info visit [bunn.com](http://bunn.com).

Created on:  
06/27/2018