

# H5E-DV PC 90

28.4" x 15.5" x 7.0"  
(72.1cm x 39.4cm x 17.8cm)



- Dispenses hot water in three portion sizes
- Front of machine volume programming
- Precise temperature (60°F-210°F) (15.5°C-98.9°C) ensures consistent, high quality results; adjustable in 1° increments
- Three programmable volume settings and one push and hold continuous dispense button
- All stainless design
- Locate hot water at preparation site to increase speed, safety and efficiency of kitchen staff
- Dual voltage adaptable (Can operate at 120V/15 amp or 120/208-240V/20 amp)

Servers and airpots sold separately

Agency:



## Specifications

**Product #:** 39100.0001

**Water Access:** Plumbed

**Finish:** Stainless

**Faucet:** Upper

**Temp. Setting:** 90°F (32.222°C)

**Dispense:** Portion Control

**Dispense:** Push Button

## Additional Features

## Electrical & Capacity

| Volts       | Amps | Watts | Cord Attached | Plug Type | 8oz (236mL) cups/hr |               | Phase | # Wires plus Ground | Hertz |
|-------------|------|-------|---------------|-----------|---------------------|---------------|-------|---------------------|-------|
|             |      |       |               |           | 35°F (1.67°C)*      | 140°F (60°C)* |       |                     |       |
| 120/208-240 | 16.9 | 4050  | No            | -         | 210                 | 1             | 3     | 60                  |       |
| 120/208     | 15   | 3054  | -             | N/A       | 350                 | -             | -     | -                   |       |
| 120/240     | 17   | 4050  | -             | N/A       | 466                 | -             | -     | -                   |       |

\*Temperature of water entering the system

## Plumbing Requirements

| PSI   | kPa     | Fitting Supplied        | Water Flow Required (GPM) |
|-------|---------|-------------------------|---------------------------|
| 20-90 | 138-621 | 1/4" Male Flare Fitting | -                         |

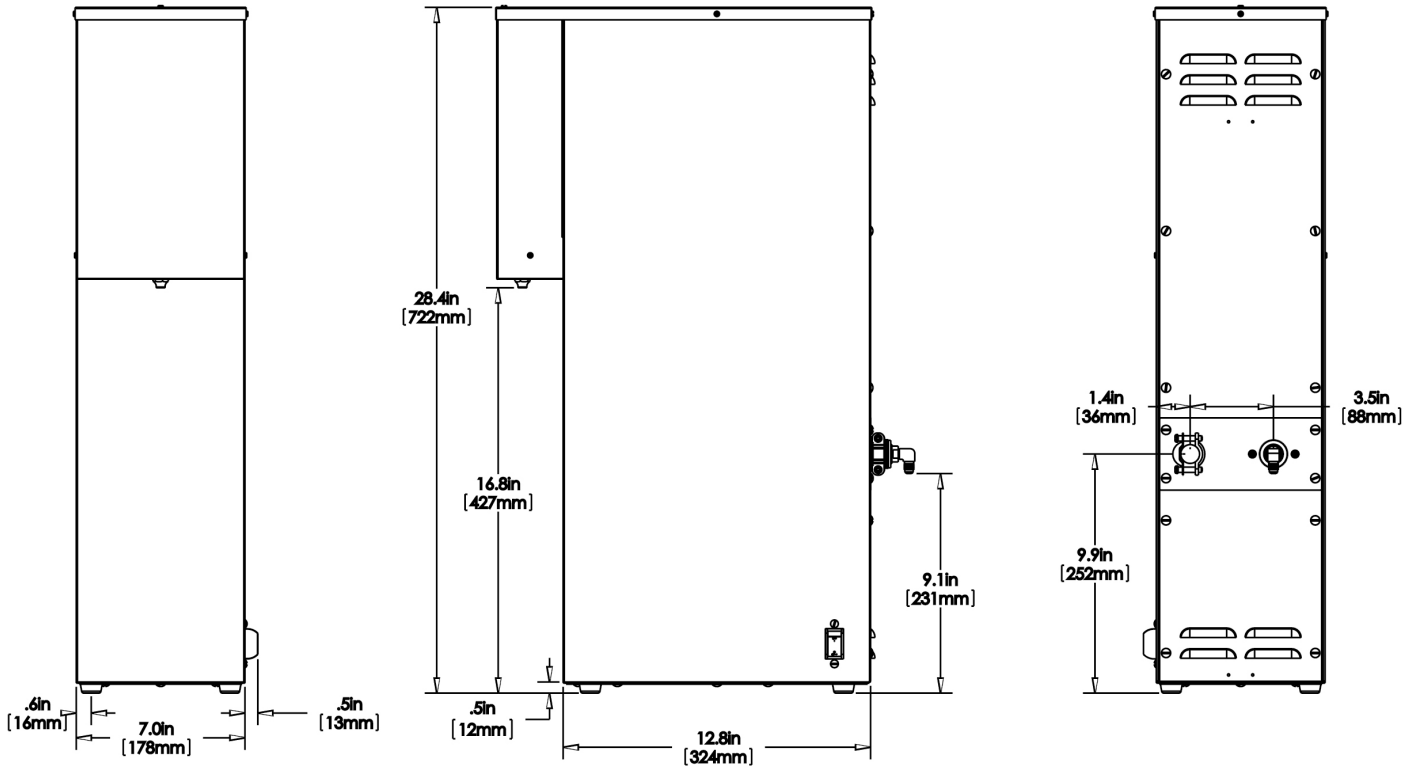
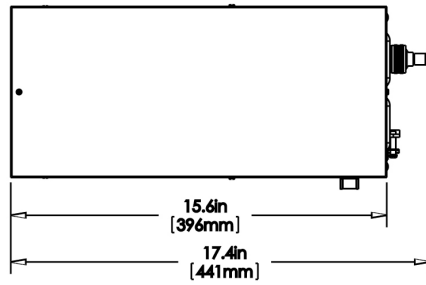
## CAD Drawings

| 2D | Revit | KLC |
|----|-------|-----|
| ●  |       |     |



BUNN® reserves the right to change specifications and product design without notice. Such revisions do not entitle the buyer to corresponding changes, improvements, additions or replacements for previously purchased equipment. For most current specifications and other info visit [bunn.com](http://bunn.com).

Created on:  
09/13/2017



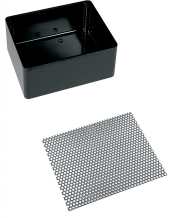
|         | Unit    |          |          | Shipping |        |       |            |                       |
|---------|---------|----------|----------|----------|--------|-------|------------|-----------------------|
|         | Width   | Height   | Depth    | Width    | Height | Depth | Weight     | Volume                |
| English | 7.0 in. | 28.4 in. | 15.5 in. | -        | -      | -     | 32.250 lbs | 4.164 ft <sup>3</sup> |
| Metric  | 17.8 cm | 72.1 cm  | 39.4 cm  | -        | -      | -     | 14.629 kgs | 0.118 m <sup>3</sup>  |



BUNN® reserves the right to change specifications and product design without notice. Such revisions do not entitle the buyer to corresponding changes, improvements, additions or replacements for previously purchased equipment. For most current specifications and other info visit [bunn.com](http://bunn.com).

Created on:  
09/13/2017

## Related Products & Accessories:H5E-DV PC 90(39100.0001)



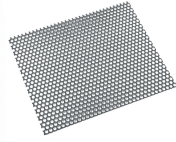
DRIP TRAY KIT (2.5\"/>

Product #: 02497.0000



DRIP TRAY

Product #: 02545.0000



COVER, DRIP TRAY-PERFORATED

Product #: 02546.0000

FOOT, RUBBER

Product #: 02547.0000

PATAS

Product #: 02547.0000



WATER FILTER,  
EQHP-10L

Product #: 39000.0001



WATER FILTER,  
EQHP-25L

Product #: 39000.0002



BUNN® reserves the right to change specifications and product design without notice. Such revisions do not entitle the buyer to corresponding changes, improvements, additions or replacements for previously purchased equipment. For most current specifications and other info visit [bunn.com](http://bunn.com).

Created on:  
09/13/2017