

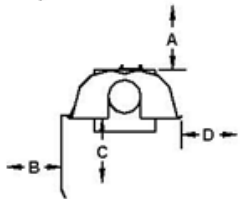
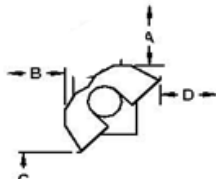
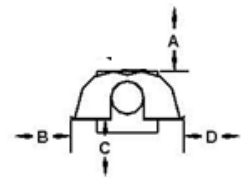
# BERNER PATIO HEATERS Deco-Tube

## Compact Comfort

### Two-Stage, Dual Comfort Series

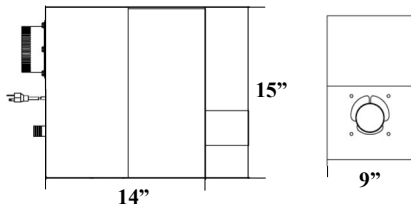
<u>SPECIFICATIONS</u>	<u>Natural Gas</u>	<u>Propane</u>
Finish	Powder Coated Black (Standard) Stainless Steel (Optional)	Powder Coated Black (Standard) Stainless Steel (Optional)
Manifold Pressure	3.5" W.C. (Hi), 2.4" W.C. (Lo)	10.5" W.C. (Hi), 6.2" W.C. (Lo)
Inlet Pressure	5.0" W.C. (Min), 14.0" W.C. (Max)	11.5" W.C. (Min), 14.0" W.C. (Max)
Inlet Connection	1/2" Female NPT	
Electric Supply	120 VAC, 60 HZ, 1 Amp: 36" cord with grounded 3 prong plug	
Control	Two-Stage Switch - Part #BPA-EE20	

### CLEARANCES TO COMBUSTIBLES

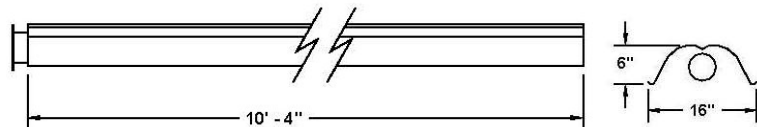


Reflector Configuration	Dimension	Model No.			
		BPD-ET3040 30,000 - 40,000 btu/hr	BPD-ET4560 45,000 - 60,000 btu/hr	BPD-ET6080 60,000 - 80,000 btu/hr	BPD-ET75100 75,000 - 100,000 btu/hr
Standard	A	2"	2"	2"	2"
	B	18"	25"	26"	30"
	C	45"	58"	67"	67"
	D	18"	25"	30"	30"
45° Tilt	A	4"	4"	4"	4"
	B	4"	4"	4"	4"
	C	40"	50"	67"	67"
	D	38"	46"	58"	58"
One Side Extension	A	2"	2"	2"	2"
	B	4"	4"	4"	4"
	C	50"	58"	63"	73"
	D	35"	38"	42"	45"

#### Burner Dimensions



#### Reflector Dimension



#### WARRANTY

- Burner and Controls = 3 years
- Aluminized Heat Exchanger with Post Purge = 10 years

