



CONTROL CENTER MODEL MRS

SPECIFICATIONS

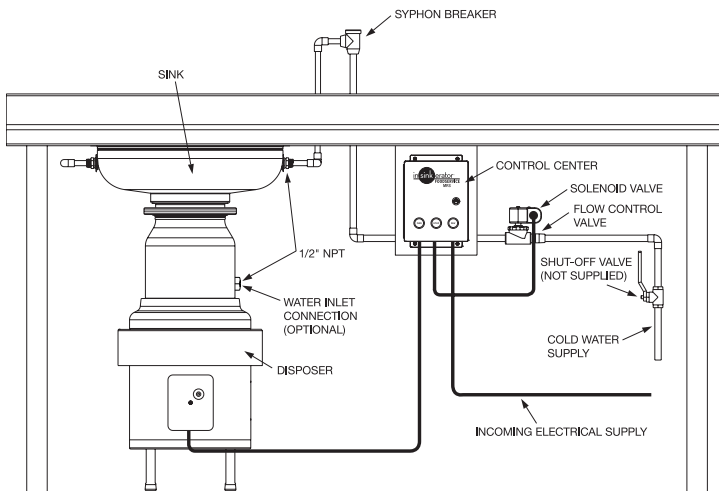
- 3 - Button switch with FWD/STOP/REV
- Stainless steel construction
- NEMA 4 - water tight enclosure
- Manual reverse allows increased cutting element life and reduces jams
- Magnetic starter/provides automatic shut-off in case of power interruption
- Operates on line voltage

VOLTAGE/PHASE AVAILABILITY

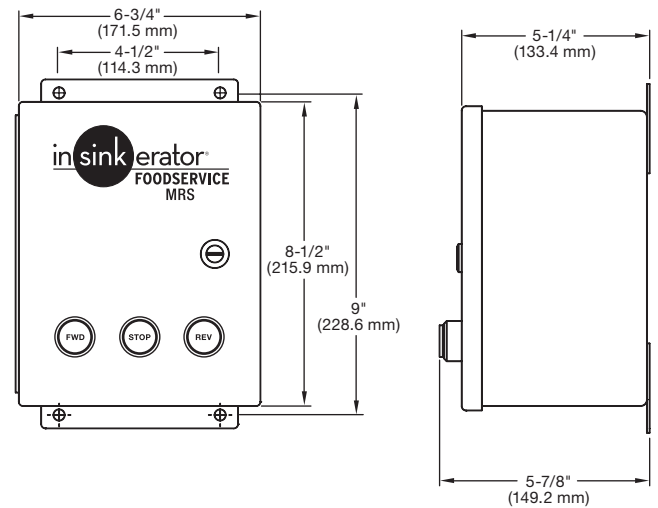
Model	Voltage/Hz	Phase	Disposer Models
MRS-6	120V, 50/60 Hz	1 Ph	SS-50 to SS-200
MRS-7	208-240V, 50/60 Hz	1 Ph	SS-50 to SS-200
MRS-8	208-240V, 50/60 Hz	3 Ph	SS-50 to SS-300
MRS-9	380-460V, 50/60 Hz	3 Ph	SS-50 to SS-750



RECOMMENDED INSTALLATION



DIMENSIONS



Our products appear on **The KCL CADalog** CD-ROM based CAD Foodservice Symbol Library. More information is available from **Kochman Consultants, Ltd.** at www.kclcad.com.



4700 21st STREET
 RACINE, WI 53406
 TEL: 800-845-8345
 FAX: 262 554-3620

www.insinkerator.com



The Emerson logo is a trademark and a service mark of Emerson Electric Co.

