



ITEM#

# HEATED BLACK GLASS SHELF

Models HBG-2418, -3018, -3618, -4818, -6018, -7218

HBGB-2418, -3018, -3618, -4818, -6018, -7218

The Hatco Heated Black Glass Shelf has a heated ceramic glass surface to create uniform heat across the entire surface, and is made of approved foodsafe material. Adjustable thermostat controls allow surface temperature to range from 100° to 200°F (38°-93°C).

Recommended for use in metallic counters. For other surfaces, verify that the material is suitable for temperature up to 200°F (93°C). Hatco is not responsible for counter damage caused by heat from the warmer.

## FLEXIBILITY

Ideal for use on pass-through areas, buffet lines, and as hors d'oeuvre displays. These unique foodwarmers are available in portable and built-in models. Surface color is black and they feature a thermostatically-controlled heated ceramic glass surface to help hold your food hot and delicious. Shelves are made of approved foodsafe materials, allowing you to place food product directly on the glass surface.

Built-in models have an optional flush mount control box with a 3' (914 mm) conduit. All units come with a 6' (1829 mm) cord, plug and a flush mount electronic control box with a 6' (1829 mm) conduit.

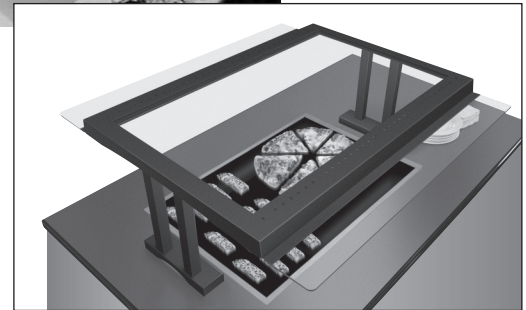
## QUALITY

The following features assure the finest performance for years to come:

- Available in portable and built-in models.
- Hatco Heated Black Glass Shelves are made of approved foodsafe materials allowing you to place food product directly on the glass surface.
- Every Heated Black Glass Shelf features a thermostatically-controlled heated base to help hold food hot and delicious.
- Lighted On/Off rocker switch.
- The built-in and portable units are equipped with an attractive trim mounting ring that is available in stainless steel (standard) or *Designer* Black powdercoated.
- Portable units are available with *Designer* Black powdercoated and plastic handles.
- Optional angled food stop for portable models keeps product on the heat zone.



Models HBG-2418



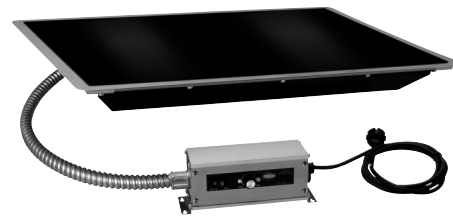
Model HBGB-2418 under GR3L-35 with accessory sneeze guards.



Model HBG-2418 with accessory *Designer* Black powdercoated and plastic handles



Model HBG-2418 with optional angled food stop (close-up view)



Model HBGB-2418

## HBGB Countertop Cut-Out Dimensions

Model	Minimum Width	Maximum Width	Minimum Depth	Maximum Depth
HBGB-2418	24.62" (625 mm)	24.87" (632 mm)	18.62" (473 mm)	18.87" (479 mm)
HBGB-3018	30.62" (778 mm)	30.87" (784 mm)	18.62" (473 mm)	18.87" (479 mm)
HBGB-3618	36.62" (930 mm)	36.87" (937 mm)	18.62" (473 mm)	18.87" (479 mm)
HBGB-4818	48.62" (1235 mm)	48.87" (1241 mm)	18.62" (473 mm)	18.87" (479 mm)
HBGB-6018	60.62" (1540 mm)	60.87" (1546 mm)	18.62" (473 mm)	18.87" (479 mm)
HBGB-7218	72.62" (1845 mm)	72.87" (1851 mm)	18.62" (473 mm)	18.87" (479 mm)



HATCO CORPORATION P.O. Box 340500 Milwaukee, WI 53234-0500 U.S.A.  
 (800) 558-0607 • (414) 671-6350 • Fax (800) 543-7521 • Int'l. Fax (414) 671-3976  
 www.hatcocorp.com • E-mail: equipsales@hatcocorp.com

Form No. HBG Spec Sheet

Printed in U.S.A.  
 September 2011

BLANKET ELEMENTS GUARANTEED AGAINST BURNOUT AND BREAKAGE FOR ONE YEAR.

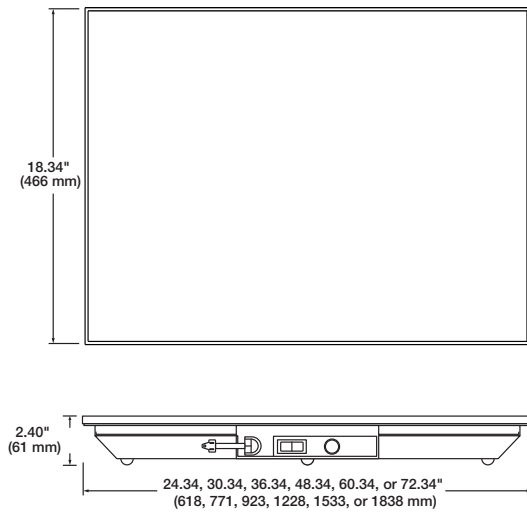


# HEATED BLACK GLASS SHELF

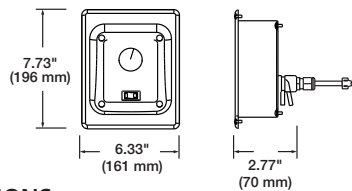
Models HBG-2418, -3018, -3618, -4818, -6018, -7218

HBGB-2418, -3018, -3618, -4818, -6018, -7218

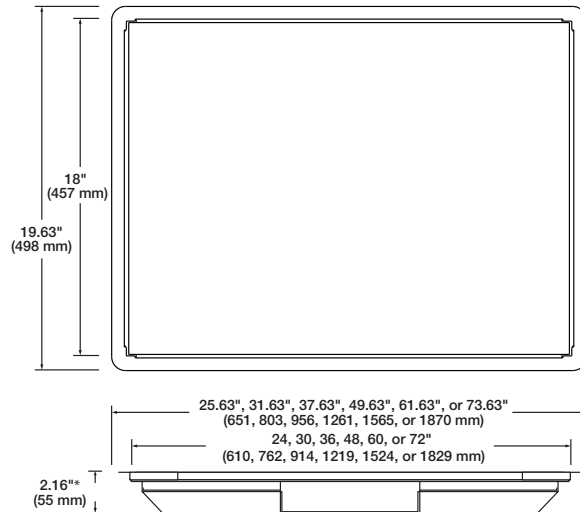
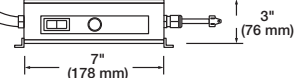
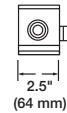
HBG Models



HBGB Optional Flush Mount Control Box



HBGB Models

\*For Recessed Models  
height = 2.66\" (68 mm)

## SPECIFICATIONS

### Portable Models

Model	Watts	Amps	Width	Shipping Weight
HBG-2418	425	3.5	24.34\" (618 mm)	22 lbs. (10 kg)
HBG-3018	525	4.4	30.34\" (771 mm)	27 lbs. (12 kg)
HBG-3618	630	5.3	36.34\" (923 mm)	32 lbs. (15 kg)
HBG-4818*	850	7.1	48.34\" (1228 mm)	44 lbs. (20 kg)
HBG-6018*	1050	8.8	60.34\" (1533 mm)	54 lbs. (25 kg)
HBG-7218*	1260	10.5	72.34\" (1838 mm)	64 lbs. (29 kg)

### Built-in Models<sup>^</sup>

Model	Watts	Amps	Heated Width	Shipping Weight
HBGB-2418	425	3.5	24\" (610 mm)	27 lbs. (12 kg)
HBGB-3018	525	4.4	30\" (762 mm)	32 lbs. (15 kg)
HBGB-3618	630	5.3	36\" (914 mm)	37 lbs. (17 kg)
HBGB-4818*	850	7.1	48\" (1220 mm)	54 lbs. (25 kg)
HBGB-6018*	1050	8.8	60\" (1524 mm)	64 lbs. (29 kg)
HBGB-7218*	1260	10.5	72\" (1829 mm)	74 lbs. (34 kg)

\*Units over 36\" (914 mm) are constructed of two equal size pieces of glass. Portable models include 4\" (102 mm) legs.

<sup>^</sup> Recommended for use in a metallic countertop. For other surfaces, verify that the material is suitable for temperatures up to 200°F.

### OPTIONS (NOT FOR RETROFIT)

- Flush mount recessed thermostatic control box with lighted On/Off rocker switch and angled recessed controls in **Stainless Steel (Standard)** or **Designer Black Powdercoated** (HBGB models only).
- Trim Ring, Available in **Stainless Steel (Standard)** or **Designer Black Powdercoated** (HBGB models only)
- Built-in Heated Black Glass with Recessed Top (HBGB models only)
- Food Stop (HBG models only)

### PRODUCT SPECS

#### Heated Black Glass Shelf

The Heated Black Glass Shelf shall be a Hatco Model ... as manufactured by the Hatco Corporation, Milwaukee, WI 53234 U.S.A.

With 24/7 parts and service assistance (U.S. and Canada only), the Heated Black Glass Shelf shall be rated at ... watts, ... volts, and ... inches (millimeters) in overall width. It shall consist of food-safe material,

### DIMENSIONS

HBG-2418, -3018, -3618, -4818, -6018, -7218: 24.34\", 30.34\", 36.34\", 48.34\", 60.34\", or 72.34\"W x 18.35\"D x 2.40\"H (618, 771, 923, 1228, 1533, or 1838 x 466 x 61 mm).

HBGB-2418, -3018, -3618, -4818, -6018, -7218: 25.63\", 31.63\", 37.63\", 49.63\", 61.63\", or 73.63\"W x 19.63\"D x 2.16\"H (651, 803, 956, 1261, 1565, or 1870 x 499 x 55 mm).

#### Control Box Dimensions:

HBGB optional flush mount: 6.33\"W x 2.77\"D x 7.73\"H (161 x 70 x 196 mm).

HBG standard control box: 7\"W x 2.5\"D x 3\"H (178 x 64 x 76 mm).

### VOLTAGE

120V, single phase, NEMA 5-15P.  
Export voltages available.

### CORD LOCATION

Front left of control.

### PLUG CONFIGURATION



### ACCESSORIES

- Rounded *Designer* Black Powdercoated and Plastic Handles

thermostatically-controlled heated base, and a 6' (1829 mm) cord with plug attached (HBG models only); or a remote box with 3' (914 mm) conduit and a 6' (1829 mm) cord with plug attached (HBGB models only).

HATCO CORPORATION P.O. Box 340500 Milwaukee, WI 53234-0500 U.S.A. • (800) 558-0607 • (414) 671-6350  
Fax (800) 543-7521 • Int'l. Fax (414) 671-3976 • www.hatcocorp.com • E-mail: equipsales@hatcocorp.com