



Project _____
 Item # _____
 Quantity _____

Drop-In 4/3-Size Heated Wells — UR, C-UR Fabricator Components

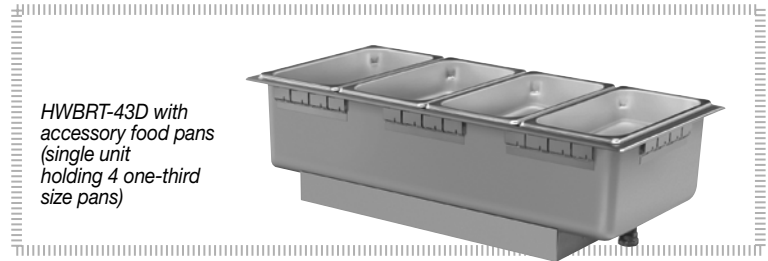
- Models: HWBLRT-43, -43D
 HWBLRN-43, 43D
 HWBRT-43, 43D
 HWBRN-43, -43D
 HWBHRT-43, -43D
 HWBHRN-43, -43D

Hatco's Drop-In 4/3-Sized Heated Wells are recognized as having UL components that that hold hot food products at safe serving temperatures, plus have the added benefit of allowing fabricators the freedom to design their own steam tables. Like the full-size models, Hatco units offer a larger drain, more consistent holding temperatures, heavier stainless steel construction, easier-to-service design for quick change of components, and a remote thermostat with separate power switch.

Standard features

- Rectangular Uninsulated 4/3-Size Heated Well (Top mount only)
- Superior thermostat controls that read the actual temperature of the well and add heat only if needed
- Thermostatic or infinite (not available on 120V High Watt) controls available
- Without conduit and control box enclosure
- Available with or without a drain
- 50% larger drain with flat screen simplifies cleaning and holds pans level
- Thermostatic controls feature a separate lighted ON/OFF rocker switch and temperature dial, allowing preset temperatures to be maintained
- Low (120V only), Standard and High Watt
- Thicker stainless steel construction and solid brazed joints for durability
- Easy service access to elements or thermostats
- Mounting kits for combustible countertops available
- Accessory adapters to convert 4/3-Size Wells to hold round pans available

*Fabricator will need to obtain UL approvals.



HWBRT-43D with accessory food pans (single unit holding 4 one-third size pans)

Options (available at time of purchase only)

- Additional Power Supply Lead Wire in 1' (305 mm) increments for "RN" (Infinite Control) Components (Lead Wire only - Conduit not included)

Accessories

- Rectangular Full-Size Stainless Steel Food Pans:
- Third-Size (2.5" [64 mm] H)
 - Half-Size (2.5" [64 mm] H)
 - Full-Size (2.5" [64 mm] H)
 - Full-Size (4" [101 mm] H)
 - Full-Size (6" [152 mm] H)
- Round Food Pans:
- 11-Quart (10-Liter)
- Hinged Lid for Round Pans:
- 11-Quart (10-Liter)
- Notched Lid for Round Pans:
- 11-Quart (10-Liter)
- Stainless Steel Wire Trivets:
- Half-Size
 - Full-Size
- Adapter to convert warmers to hold Round Pans which holds two 11-Quart (10-Liter) Inserts
- Support Bars:
- 12" (305 mm)
- Mounting Kit for combustible countertops
 - 3/4" Ball Valve for unit with Drains
 - 3/4" Gate Valve for unit with Drains
 - Heated Well Remote Handle for 3/4" Drains (requires a Ball or Gate Valve)



HATCO CORPORATION | P.O. Box 340500 Milwaukee, WI 53234-0500 U.S.A.
 (800) 558-0607 | (414) 671-6350 | www.hatcocorp.com | support@hatcocorp.com



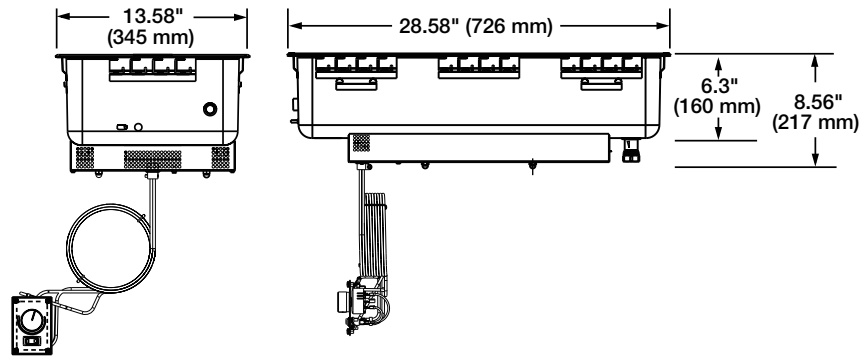
Drop-In 4/3-Size Heated Wells — UR, C-UR Fabricator Components

Models: HWBLRT-43, -43D, HWBLRN-43, -43D, HWBRT-43, -43D, HWBRN-43, -43D,
HWBHRT-43, -43D, HWBHRN-43, -43D

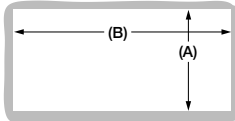
Ordering Instructions *(Please specify the following with each order)*

1. **Desired Voltage:** 120, 208, 240V
(export voltage available)
2. **Base Size of Heated Well**
A. 4/3 Rectangular:
12" x 27" (305 x 686 mm)
3. **Drain** (with or without)
4. **Wattage**
A. High Watt
B. Standard Watt
C. Low Watt (120V only)
5. **Agency:**
A. UR and C-UR (UL recognized – Conduit and control enclosures not included). Fabricators will need to obtain UL approvals

HWB-43-UR Series



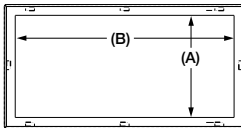
Non-Combustible
Countertop
Opening
("Rectangular"
cut-out)



Cutout Dimensions for Non-Combustible Countertops

Model	Minimum Width (A)	Maximum Width (A)	Minimum Depth (B)	Maximum Depth (B)
HWB-, HWBI-43 Series	12.69" (322 mm)	12.94" (328 mm)	27.69" (703 mm)	28.00" (711 mm)

Combustible
Countertop
Opening
("Rectangular"
cut-out)

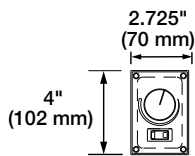


Cutout Dimensions for Combustible Countertops ▲

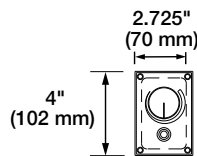
Model	Minimum Width (A)	Maximum Width (A)	Minimum Depth (B)	Maximum Depth (B)
HWB-, HWBI-43 Series	14.00" (356 mm)	14.25" (362 mm)	29.00" (737 mm)	29.25" (743 mm)

▲ Accessory Mounting Kit required for Top Mounts

Control Panels



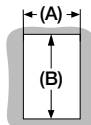
Thermostatic
(On/Off Lit Rocker Switch)



Infinite
(Pilot Light)

(Not available on
120V high watt)

Control Box Opening
(Thermostatic or Infinite
shown)



Cutout Dimensions for Control Boxes

Control Box	Minimum Width (A)	Maximum Width (B)
T-Stat Control	2.125" (54 mm)	3.375" (86 mm)
Infinite Switch	2.125" (54 mm)	3.375" (86 mm)



Drop-In 4/3-Size Heated Wells — UR, C-UR Fabricator Components

Models: HWBLRT-43, -43D, HWBLRN-43, -43D, HWBRT-43, -43D, HWBRN-43, -43D,
HWBHRT-43, -43D, HWBHRN-43, -43D

Drop-In 4/3-Size Models — UR, C-UR Fabricator Components

The shaded areas contain electrical information for International models only

	Model ^a	Dimensions (Width x Depth x Height)	Volts ^b	Watts	Amps	Optional Control Configuration	Ship Weight							
Low Watt	HWBLRT-43 HWBLRT-43D HWBLRN-43 HWBLRN-43D	13.58" x 28.58" x 8.56" (345 x 726 x 217 mm)	120	750	6.3		30 lbs. (14 kg) 33 lbs. (15 kg) 21 lbs. (10 kg) 33 lbs. (15 kg)							
	Standard Watt							13.58" x 28.58" x 8.56" (345 x 726 x 217 mm)	120	1200	10.0	Thermostatic (ON/OFF lit rocker switch)	Infinite (control with pilot light)	23 lbs. (11 kg) 21 lbs. (10 kg) 21 lbs. (10 kg) 21 lbs. (10 kg)
									208		5.8			
									240	5.0				
220		1200	5.5											
240	5.0													
High Watt	HWBHRT-43 HWBHRT-43D HWBHRN-43* HWBHRN-43D*	13.58" x 28.58" x 8.56" (345 x 726 x 217 mm)	120	1650	13.8	Thermostatic (ON/OFF lit rocker switch)	Infinite (control with pilot light)	30 lbs. (14 kg) 21 lbs. (10 kg) 30 lbs. (14 kg) 33 lbs. (15 kg)						
			208		7.9									
			240		6.9									
			220	1650	7.5									
			240		6.9									

*208 or 240V only.

^a "RT" added to model name indicates unit with thermostat control, lit rocker switch and 36" (914 mm) or 72" (1829 mm) capillary.

^b "RN" added to model name indicates unit with infinite switch control, pilot light and 36" leads.

• CE Mark not available.

PRODUCT SPECS Drop-In 4/3-Size Heated Wells

The Drop-In 4/3-Size Heated Well – UR, C-UR Fabricator Components shall be a Model ...as manufactured by the Hatco Corporation, Milwaukee, WI 53234 U.S.A.

The Drop-In 4/3-Size Heated Well shall be rated at ...watts, ...volts, and be... inches (millimeters) in overall width and be ...inches (millimeters) in overall depth. It shall consist of stainless and aluminized steel housing with a metal sheathed heating

element, EZ locking hardware for installation, and a remote thermostat with lighted power switch. Models with a drain consist of a 3/4" NPT drain.

Warranty consists of 24/7 parts and service assistance (US and Canada only).

HATCO CORPORATION | P.O. Box 340500 Milwaukee, WI 53234-0500 U.S.A.
(800) 558-0607 | (414) 671-6350 | www.hatcocorp.com | support@hatcocorp.com