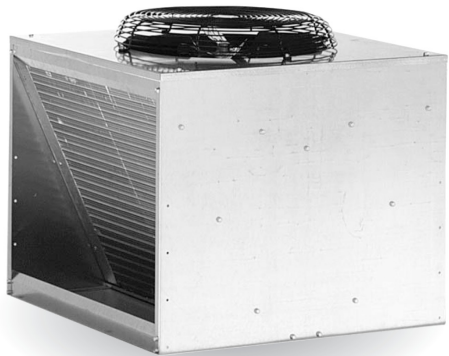


ERC and PR Series Remote Condensers

Air Cooled Remote Condensers

ERC311



Features

- Operate in wide outdoor temperature range from -20°F to 120°F.
- Single or double circuit for single or double unit installations.
- Heavy gauge galvanized steel for corrosion resistance.
- Thermally protected fan motors.
- PVC coated steel fan guards.
- Direct drive fan blades.
- Standard Aero-Quip fittings.
- Maximizes ice production by dissipating heat away from ice machine
- Minimizes air conditioning load.

PRC 241



Line Sets

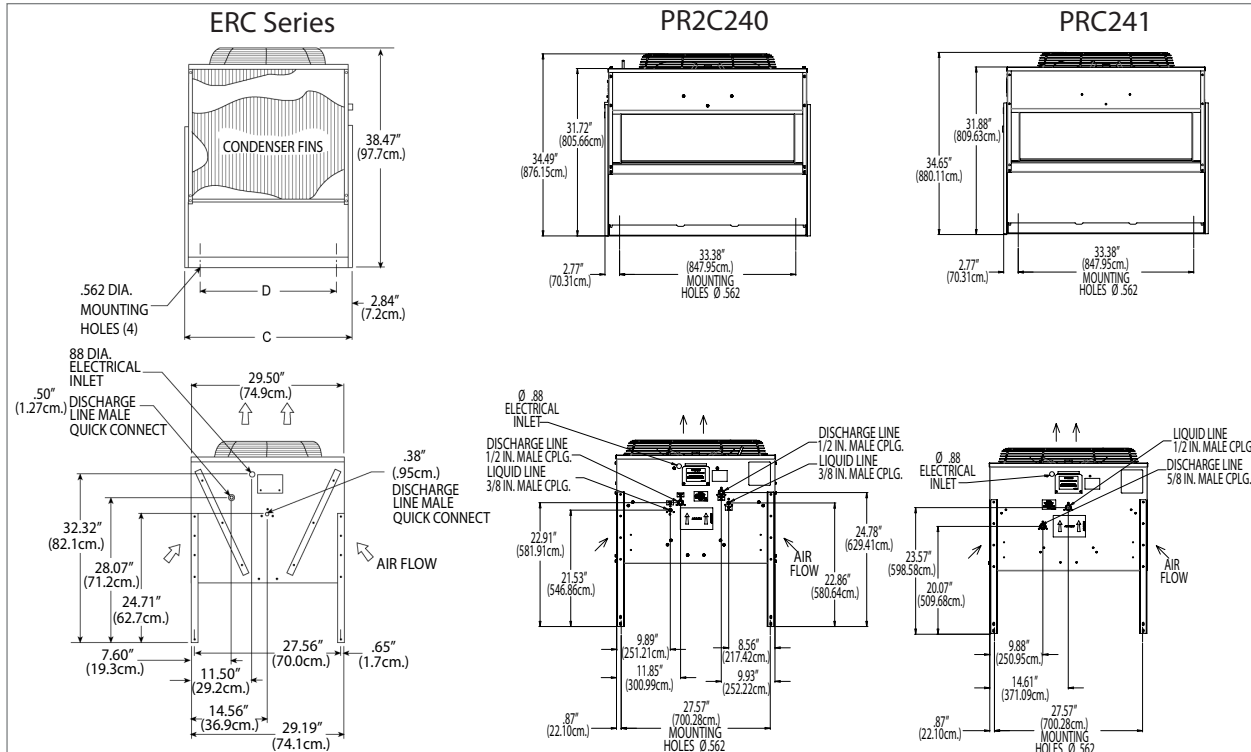
Choice of pre-charged, insulated, refrigerant line sets with easy to install quick-connect couplings. Available in 10 ft., 25 ft., 40 ft. and 75 ft. lines. Please consult ice machine users manual for installation guidelines.



Warranty

- 3 years parts and labor on all components.

Warranty valid in North, South & Central America.
Contact factory for warranty in other regions.



ERC Series

Operating Requirements: Electrical Voltage Min. -10% Max. +10%

Model Number	C Overall Length	D Mounting Hole Spacing	Basic Electrical Volts/Hz/Phase	Circuits	Min. Circuit Ampacity	Contains Headmaster?	Shipping Weight lb / kg	Shipping Carton W x D x H
ERC111-1	29.125"	23.54"	115 / 60 / 1	1	2.7	Yes	95 / 43	32 x 31 x 34 (81.3 x 78.7 x 86.4 cm)
ERC311-32	29.125"	23.54"	208-230 / 60 / 1	1	1.25	Yes	130 / 59	32 x 34 x 34 (81.3 x 78.7 x 86.4 cm)
ERC611-32	37.75"	32.16"	208-230 / 60 / 1	1	1.9	Yes	140 / 64	31 x 33 x 39 (81.3 x 78.7 x 99.1 cm)

Note: All units have a galvanized finish, are 29.5" wide and 38.5" high with legs. These units are designed to be powered by the ice machine they are connected to. The minimum circuit ampacity and maximum fuse size of the ice machine includes the requirements of the remote condenser. All but the ERC611 have 1/2" discharge and 3/8" liquid line connections. The ERC611 has a 5/8" discharge line connection.

PR Series

Model Number	Overall Length	Mounting Hole Spacing	Basic Electrical Volts/Hz/Phase	Circuits	Min. Circuit Ampacity	Contains Headmaster?	Shipping Weight lb / kg	Shipping Carton W x D x H
PR2C240-32	38.91"	33.38"	208-230 / 60 / 1	2	1.9	No	135 / 61	32 x 40.5 x 27.5 (81.3 x 102.9 x 69.9 cm)
PRC241-32	38.91"	33.38"	208-230 / 60 / 1	1	1.9	Yes	135 / 61	

Note: This unit has a galvanized finish, is 23.8125" wide and has adjustable height legs. Heights are 12", 18" and 24". Total height with legs is 29.25" or 35.25" or 41.25". This unit is designed to be powered by the ice machine it is connected to. The minimum circuit ampacity and maximum fuse size of the ice machine includes the requirements of the remote condenser.

Accessories

RTE10 -10ft. (3.0 m) precharged R-404A tubing
 RTE25 -25ft. (7.6 m) precharged R-404A tubing
 RTE40 -40ft. (12.2 m) precharged R-404A tubing
 RTE75 -75ft. (22.9 m) precharged R-404A tubing
 KTE4 -Tube End Kit- contains 4 quick connect fittings for any RTE Line Set

RTEL10 -10ft. (3 m) precharged R-404A tubing. Use with C2648 remote cooled units
 RTEL25 -25ft. (7.6 m) precharged R-404A tubing. Use with C2648 remote cooled units
 RTEL40 -40ft. (12.2 m) precharged R-404A tubing. Use with C2648 remote cooled units
 RTEL75 -75ft. (22.9 m) precharged R-404A tubing. Use with C2648 remote cooled units
 KTEL4-Tube End Kit- contains 4 quick connect fittings for RTEL tubing
 KERCF-Air Filter for ERC111 or ERC311

Scotsman Ice Systems • 775 Corporate Woods Parkway • Vernon Hills, IL 60061

1-800-SCOTSMAN

Fax: 847-913-9844

E-mail: customer.relations@scotsman-ice.com

www.scotsman-ice.com