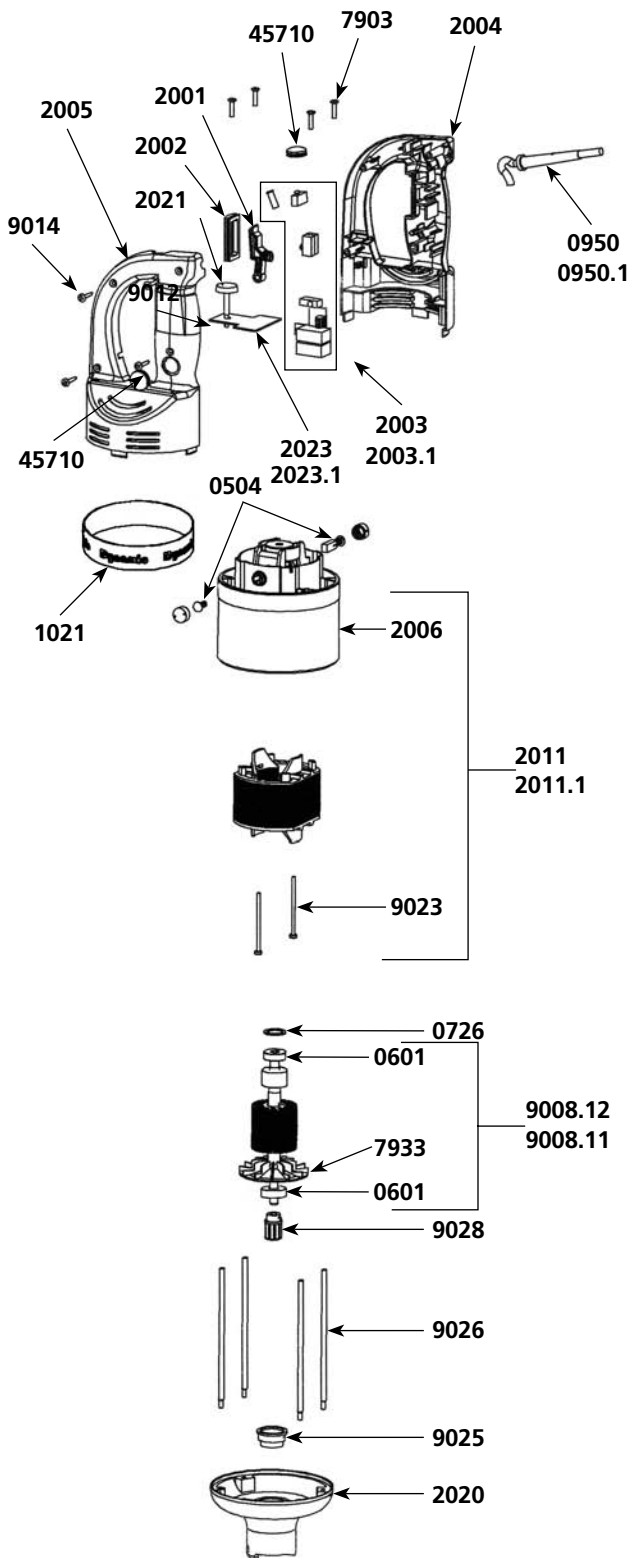


## Parts list

Code List \$ Price



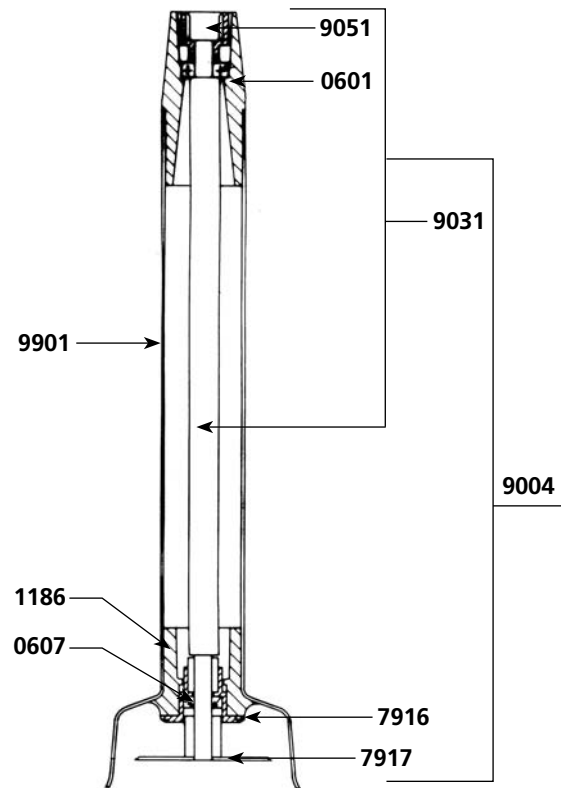
Carbon brushes (2)	0504	14,08
Ball bearing	0601	14,08
Squeezing washer	0726	1,98
Safety button, return spring	0768	3,89
Strain relief 230 V	0950	2,46
Strain relief 115 V	0950.1	2,46
Filter C.E.M. 230 V	0999.20	14,34
Warning label	1017	4,95
Dynamic label	1021	12,27
ID label 230 V	1069	5,08
ID label 115 V	1070	5,08
Micro switch	1237	10,99
Power on indicator light 230 V	1241	5,41
Power on indicator light 115 V	1241.1	5,41
Control lever	2001	10,21
Control lever protector	2002	6,06
Circuit board 230 V (4 switches + capacitor)	2003	123,68
Circuit board 115 V (4 switches + capacitor)	2003.1	123,68
Half handle (no button)	2004	52,86
Half handle (button side)	2005	52,86
Motor housing + carbon brush holders	2006	73,80
Stator 230 V (carter + carbon brush holders)	2011	203,46
Stator 115 V (carter + carbon brush holders)	2011.1	203,46
Power cord 230 V > 2002	2012	27,98
Power cord 115 V > 2002	2012.1	27,98
Power cord (English) > 2002	2012.2	49,25
Power cord (Australian) > 2002	2012.3	53,90
Lower aluminum housing	2020	135,65
Variable speed knob	2021	4,00
Complete handle 230 V	2022	259,78
Complete handle 115 V	2022.1	259,78
Variable speed circuit board 230 V	2023	85,27
Variable speed circuit board 115 V	2023.1	85,27
Rubber button cap	45710	3,05
Spacer screws (4)	7903	4,57
Fan	7933	8,96
Rotor 115 V	9008.11	224,40
Rotor 230 V	9008.12	224,40
Power cord 230 V < 2002	9011	21,85
Handle screws (4)	9014	0,66
Motor field screws (2)	9023	3,72
Motor ball bearing sleeve	9025	4,30
Spacer rods (4)	9026	15,87
Coupler for armature	9028	9,37
Power cord 115 V < 2002	9040	27,34
Carbon brush wires 230 V	9043	9,37
Power cord (Australian) < 2002	9066	52,67
Power cord (English) < 2002	9067	47,93
Carbon brush wires 115 V	9143	9,37
BM 2000 motor block (see machine catalog)	AC001	-

# MF 90/2000 & MFAP 90/2000

## MF 90/2000 & MFAP 90/2000 foot

**Parts list** **Code List \$ Price**

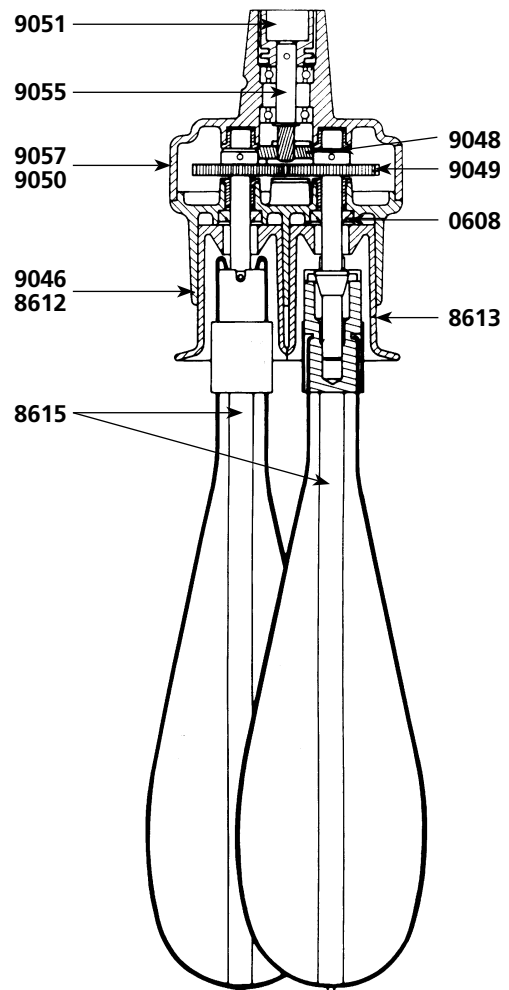
Ball bearing	0601	<b>14,08</b>
Waterproof seal	0607	<b>18,36</b>
Lower bearing assembly support	1186	<b>21,05</b>
Lower bearing assembly	7916	<b>34,12</b>
Cutter blade w/screw	7917	<b>37,28</b>
Lower bearing screws (3)	7950	<b>1,24</b>
Shaft, lower bearing & cutter assembly	9004	<b>168,45</b>
Shaft	9031	<b>124,62</b>
Coupling casing + pin	9051	<b>14,88</b>
Tube assembly	9901	<b>206,42</b>
Lower ball bearing screws inox (3)	9902	<b>1,24</b>
M 90 Complete Mixer tool (see machine catalog)	AC002	-



## MF 90/2000 & MFAP 90/2000 whisk tool

**Parts list** **Code List \$ Price**

Ball bearing	0601	<b>14,08</b>
Waterproof seal	0608	<b>18,89</b>
Pin 3 X 20	0744	<b>2,19</b>
Pin 3 X 14	0745	<b>1,98</b>
Spacer screws (4)	7903	<b>4,57</b>
Holder + plastic ejector + seal	8612	<b>64,20</b>
Plastic ejector (pair)	8613	<b>27,40</b>
Whisk (Pair)	8615	<b>146,39</b>
Reduction gear assembly	9034	<b>290,59</b>
Lower casing w/o middle gear	9046	<b>240,93</b>
Central double gear & shaft	9048	<b>102,24</b>
Single gear (2)	9049	<b>83,11</b>
Upper plastic casing	9050	<b>84,79</b>
Coupling casing + pin	9051	<b>14,88</b>
Equipped upper shaft	9055	<b>70,63</b>
Complete upper casing	9057	<b>110,20</b>
F 90 Complete Whisk tool (see machine catalog)	AC003	-



## Wall bracket

**Parts list** **Code List \$ Price**

Wall bracket	0880	<b>8,23</b>
--------------	------	-------------