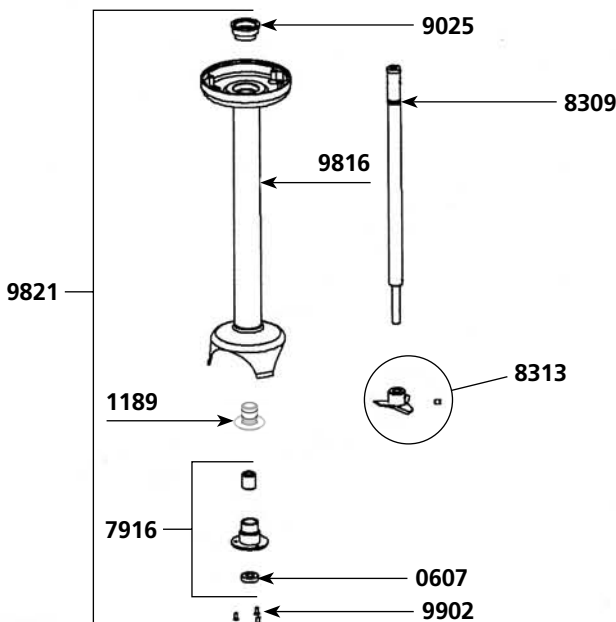
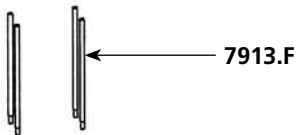
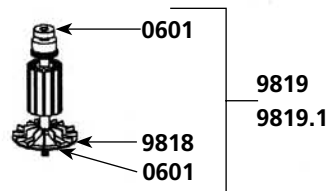
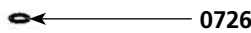
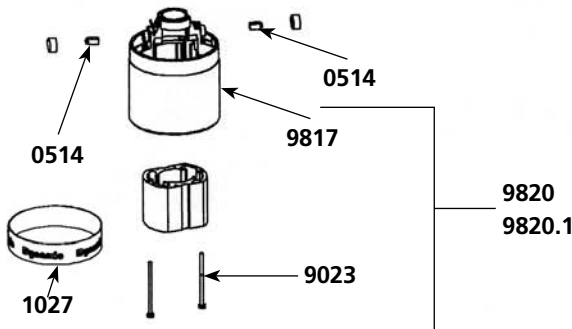
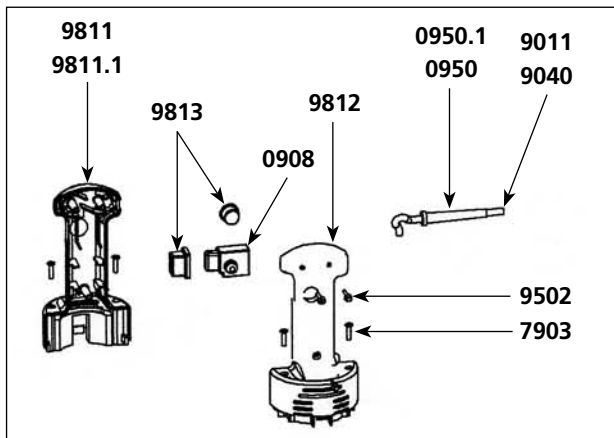


9810 - 9810.1



Parts list

Code List \$ Price

Motor brushes (2)	0514	14,08
Ball bearing	0601	14,08
Waterproof seal	0607	18,36
Squeezing washer	0726	1,98
Wall bracket	089959	20,66
Non-locking switch	0908	29,49
Strain relief 230 V	0950	2,46
Strain relief 115V	0950.1	2,46
Capacitor	0972.1	15,93
Warning label	1017	4,95
Dynamic label	1027	12,27
Label w/ serial number 230 V	1063	5,16
Label w/ serial number 115 V	1064	5,16
Lower bearing assembly support	1189	21,05
Speed variator (option) (230V)	1213	97,59
Speed variator (option) (115V)	1214	84,79
Spacer screws (4)	7903	4,57
Spacer rods (4)	7913.F	15,87
Lower bearing assembly	7916	34,12
Shaft	8309	73,80
Cutter blade w/screw	8313	37,28
Power cord 230 V	9011	21,85
Motor field screws (2)	9023	3,72
Ball bearing sleeve	9025	4,30
Power cord 115 V	9040	27,34
Power cord (Australian)	9066	54,78
Power cord (Australian)	9067	49,85
Handle screws (3)	9502	0,61
Complete handle 230 V	9810	65,88
Complete handle 115 V	9810.1	65,88
Lower half handle w/ label 230 V	9811	28,69
Lower half handle w/ label 115 V	9811.1	28,69
Upper half handle	9812	25,76
Switch protector (2)	9813	8,51
Motor & shaft housing + palier + bearing	9816	150,43
Upper motor casing (w/carbon brushes holders)	9817	43,91
Fan	9818	10,13
Rotor 230 V	9819	237,62
Rotor 115 V	9819.1	237,62
Stator 230 V (w/carter, carbon brushes holders)	9820	237,62
Stator 115 V (w/carter, carbon brushes holders)	9820.1	237,62
Complete foot assembly	9821	289,23
Shaft, lower ball bearing & cutter assembly	9836	124,62
Lower bearing screws (3)	9902	1,24

