



BMOA-48GE

BMOA-GE SERIES

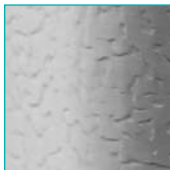
Bottom Mounted Medium Temp Open Display Merchandisers With Glass Ends

MODELS

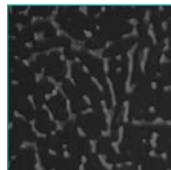
- BMOA-36GE
- BMOA-48GE
- BMOA-74GE

FEATURES

STANDARD TEXTURED FINISH



Standard white



Black also available

- 2" foamed-in-place "zero ODP" urethane insulation
- Standard LED lighting
- Shelves adjustable in 1" increments
- Three lighted tiers of two-position shelving with price tag molding
- Perforated interior back wall for better air flow
- Off-cycle defrost
- Easily accessible electrical enclosure
- Steel floor pans removable for easy service access

WARRANTY

- Standard limited three year extended compressor and two year limited parts and labor

CONSTRUCTION

- Standard electronic controller with these features:
 - Ability to monitor defrost functions from the front panel interface
 - Audible and visual alarm
 - Eliminates room thermostat, defrost termination/fan delay control, defrost timer and digital thermometer or other temperature indicator
- 24 gauge galvanized painted textured steel exterior and interior
- Ends constructed of double pane tempered glass

REFRIGERATION

- Refrigerant: R-404A
- Front air intake and rear air discharge
- Self-contained, bottom mount refrigeration system
- Temp. range: 34° to 41°F (1° to 5°C)
- R-factor (insulation efficiency rating): 17.24
- **Drain plumbing hookup recommended. Condensate pan available if there is no access to drain plumbing. Condensate pan must be field installed and requires a dedicated 15 amp, 120 volt circuit.**

OPTIONS

- Add suffix "R" for remote system
- Custom exterior colors
- Condensate evaporator drain pan
NOTE: Must be field installed and requires a dedicated 20A, 120v circuit.
- Casters
- Extra lighted shelves (one only)
- Extra non-lighted shelves



BMOA-GE SERIES

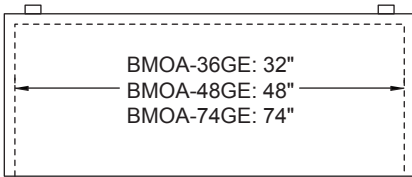
BOTTOM MOUNT OPEN DISPLAY MERCHANDISERS WITH GLASS ENDS

TECHNICAL SPECIFICATIONS

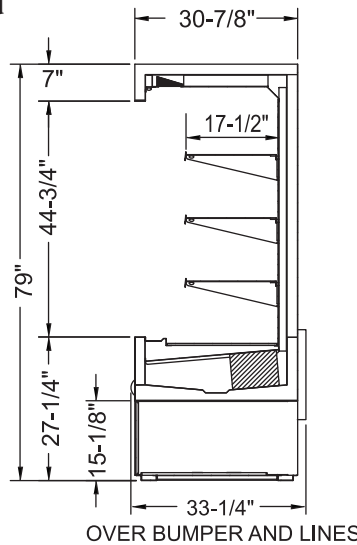
MODEL	DIMENSIONS (in.)			DIMENSIONS (mm)			VOLTS	AMPS**	UNIT H.P.	NO. OF SHELVES	STANDARD SHELF SIZE (in inches)	DISPLAY CU. FT.	TOTAL CU. FT.	SHIP CU. FT.	SHIP WT. LB/KG
	L	D*	H	L	D	H									
BMOA-36GE	36	33 ¹ / ₄	79	914	845	2007	208-230	8.6	1	3	17 ¹ / ₂ x 31 ¹ / ₂	15.8	22.8	92.0	525/239
BMOA-48GE	52	33 ¹ / ₄	79	1321	845	2007	208-230	10.4	1	3	17 ¹ / ₂ x 47 ¹ / ₂	23.7	34.2	117.0	640/291
BMOA-74GE	78	33 ¹ / ₄	79	1981	845	2007	208-230	11.6	1 ¹ / ₂	6	17 ¹ / ₂ x 36 ³ / ₈	36.5	52.7	168.0	860/391

*Depth includes bumper and lines. **If condensate evaporator pan accessory is used, it must be field installed and requires a dedicated 20 amp, 120 volt circuit.

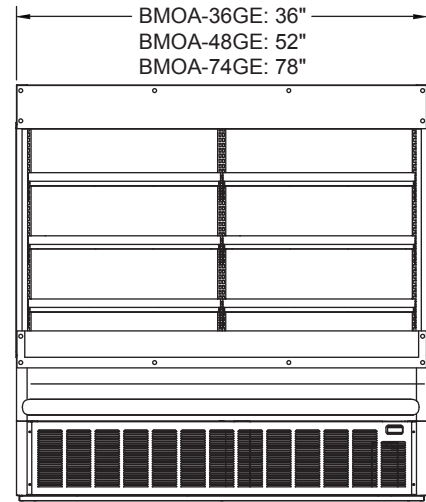
Note: 208-230/60/1 also requires neutral and safety ground wire.



PLAN VIEW



SIDE VIEW



ELEVATION VIEW

LISTINGS



HOOKUP

Electrical: Via plug in, 9 foot long flexible four wire 208-230v 14/4 cord with neutral and ground wires and molded plug.

Plumbing: Requires connection to customer's drain



NEMA L14-20P

RECOMMENDED OPERATING CONDITIONS

- Merchandisers designed to hold product in the 34° to 41°F (1° to 5°C) range
- Designed to operate in air-conditioned stores where the max. temperature is 75°F and the max. relative humidity is 55%
- Should not be installed in direct sunlight
- Should not be installed near HVAC vents, fans or doorways that will disrupt airflow and compromise the function of the air screen inside the case
- Bottom shelf should not be loaded such that the front air intake is obstructed
- Floor drain should be properly trapped
- Factory installed controls should not be altered, removed or replaced without consent of the factory
- Product must not be displayed in the cold air curtain

BID SPECIFICATIONS

Item no. BMOA-____GE
Provide ____ () Bottom Mount Open Display Merchandiser(s) With Glass Ends, Master-Bilt model no. BMOA-____GE.

Merchandiser will have interior and exterior textured finish with ends constructed of double pane tempered glass.

An electronically controlled monitoring

system will be standard. Other features include LED lighting, adjustable two-position shelves, independent shelf lighting and a perforated interior back wall.

The refrigeration system will be self-contained, have a front condenser air intake and rear air discharge and use R-404A refrigerant. The temperature range will be 34° to

41°F (1° to 5°C).

Merchandiser to have standard limited three year extended compressor warranty and two year limited parts and labor warranty.

Merchandiser to be UL and C-UL listed and UL EPH classified.



908 Highway 15 North • New Albany, MS 38652

PHONE: 800-647-1284 or 662-534-9061 • FAX: 800-232-3966 or 662-534-6049 • www.master-bilt.com

All specifications subject to change without notice.

