



T&S BRASS AND BRONZE WORKS, INC.
 2 Saddleback Cove / P.O. Box 1088
 Travelers Rest, SC 29690

Model No.
066X

Item No.

Travelers Rest, SC: 800-476-4103 • Simi Valley, CA: 800-423-0150 • Fax: 864-834-3518 • www.tsbrass.com

This Space for Architect/Engineer Approval

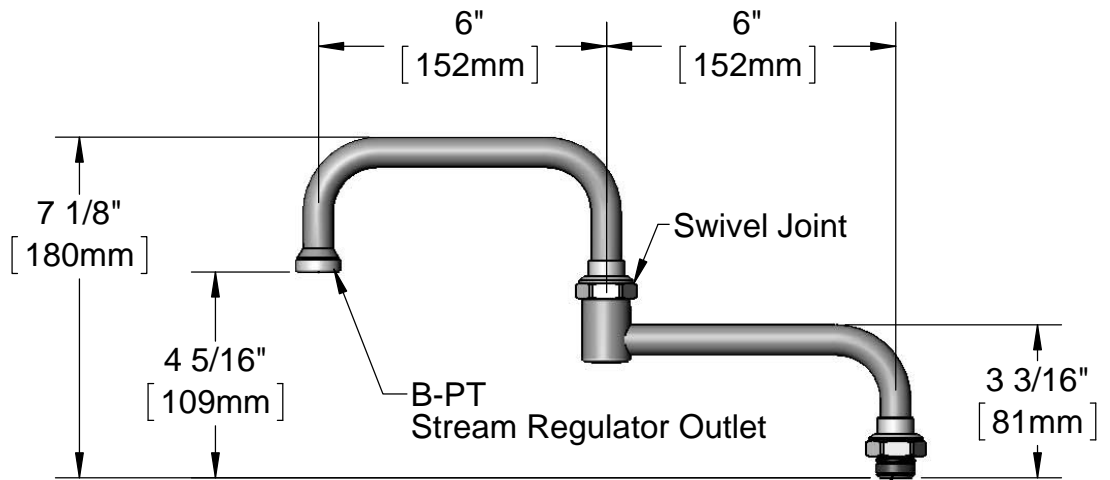
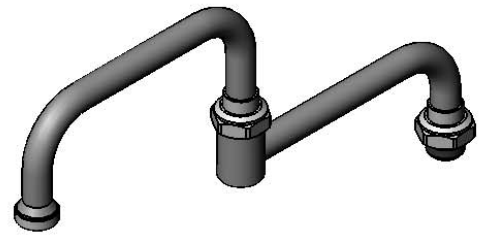
Job Name _____ Date _____

Model Specified _____ Quantity _____

Customer/Wholesaler _____

Contractor _____

Architect/Engineer _____



Swivel Piece Fits All Standard T&S Swivel Outlets

Product Specifications:
 12" Double Joint Swing Nozzle
 (6" Back Section, 6" Front Section)

Drawn KJG	Checked DMH	Approved JHB
---------------------	-----------------------	------------------------

Scale: 1:4	Date: 10/04/13
----------------------	--------------------------



T&S BRASS AND BRONZE WORKS, INC.

2 Saddleback Cove / P.O. Box 1088
Travelers Rest, SC 29690

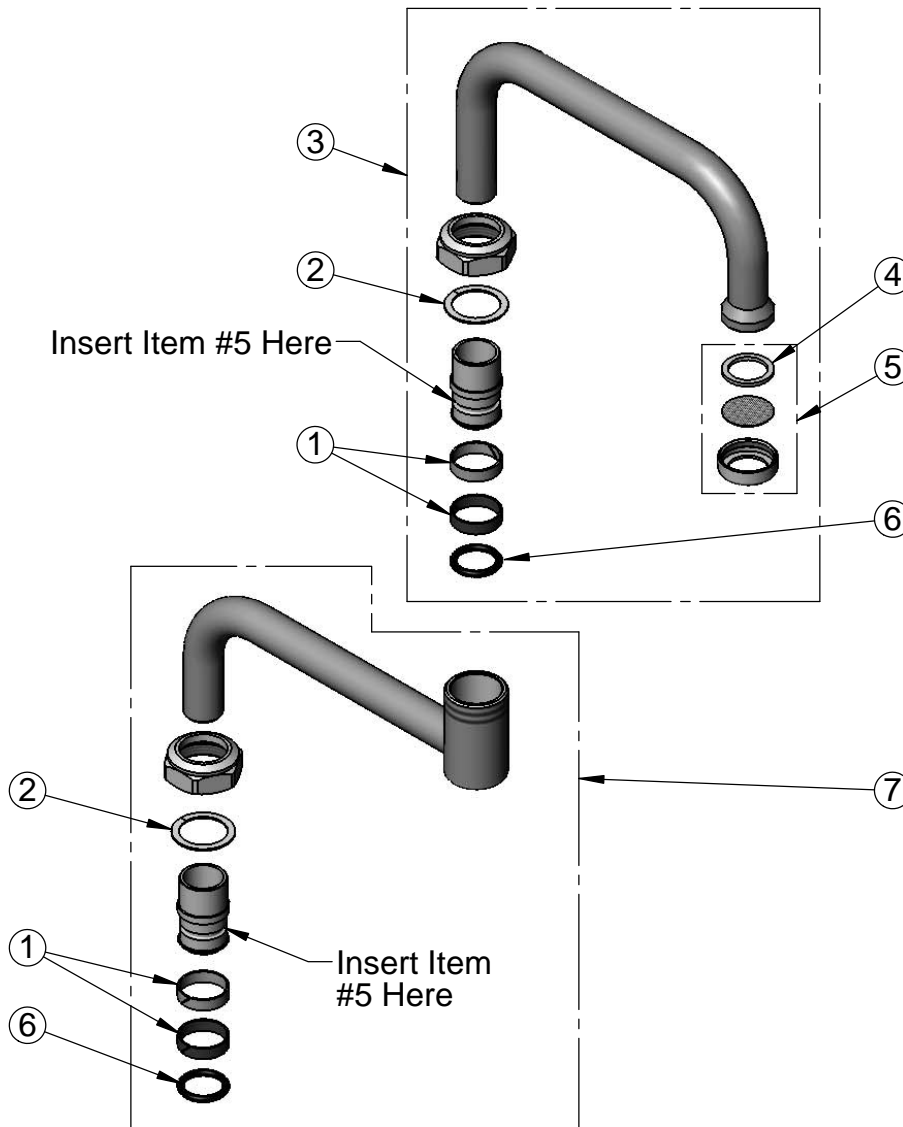
Model No.

066X

Item No.

Travelers Rest, SC: 800-476-4103 • Simi Valley, CA: 800-423-0150 • Fax: 864-834-3518 • www.tsbrass.com

ITEM NO.	SALES NO.	DESCRIPTION
1	011429-45	Swivel Sleeves (2)
2	009538-45	Swivel Washer
3	153X	6" Front Section
4	001048-45	Nozzle Tip Washer
5	B-PT	Stream Regulator
6	001074-45	O-Ring
7	151X	6" Back Section



Product Specifications:
12" Double Joint Swing Nozzle
(6" Back Section, 6" Front Section)

Drawn
KJG

Checked
DMH

Approved
JHB

Scale:
NTS

Date:
10/04/13