



**T&S BRASS AND BRONZE WORKS, INC.**  
 2 Saddleback Cove / P.O. Box 1088  
 Travelers Rest, SC 29690

Model No.  
**B-0807**

Item No.

Travelers Rest, SC: 800-476-4103 • Simi Valley, CA: 800-423-0150 • Fax: 864-834-3518 • www.tsbrass.com



**ADA Compliant**

This Space for Architect/Engineer Approval

Job Name \_\_\_\_\_ Date \_\_\_\_\_

Model Specified \_\_\_\_\_ Quantity \_\_\_\_\_

Customer/Wholesaler \_\_\_\_\_

Contractor \_\_\_\_\_

Architect/Engineer \_\_\_\_\_

1 15/16"  
 [50mm]



Metering Cartridge  
 (Requires 3/32" Hex  
 Key for Adjustment)

Blank Push Button Cap



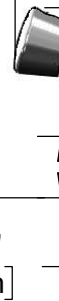
B-0199-02  
 2.2 GPM Aerator

Mounting Surface

1 1/4"  
 [32mm]  
 Maximum  
 Thickness

Temperature Mixing Valve  
 w/ Integral Check Valves

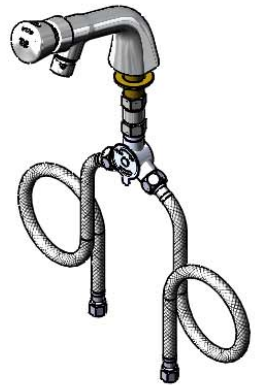
6 9/16"  
 [167mm]



4 15/16"  
 [127mm]

1 15/16"  
 [50mm]

4 5/16"  
 [109mm]



(2) 3/8" Compression x 1/2" NPSM  
 18" Flexible Stainless Steel  
 Supply Hoses

Rough-in Requirement:  
 Ø 1" [25mm] Mounting Hole

Product Specifications:

Single Hole, Single Temperature Deck Mount Faucet, Push Button  
 Metering Cartridge, 2.2 GPM Aerator, Temperature Control Mixing  
 Valve w/ Integral Check Valves & 18" Flexible Stainless Steel Supply  
 Hoses w/ 3/8" Compression Female Inlets

Product Compliance:

ASME A112.18.1 / CSA B125.1  
 NSF 61 - Section 9  
 NSF 372 (Low Lead Content)  
 ANSI A117.1 (ADA)



# T&S BRASS AND BRONZE WORKS, INC.

2 Saddleback Cove / P.O. Box 1088  
Travelers Rest, SC 29690

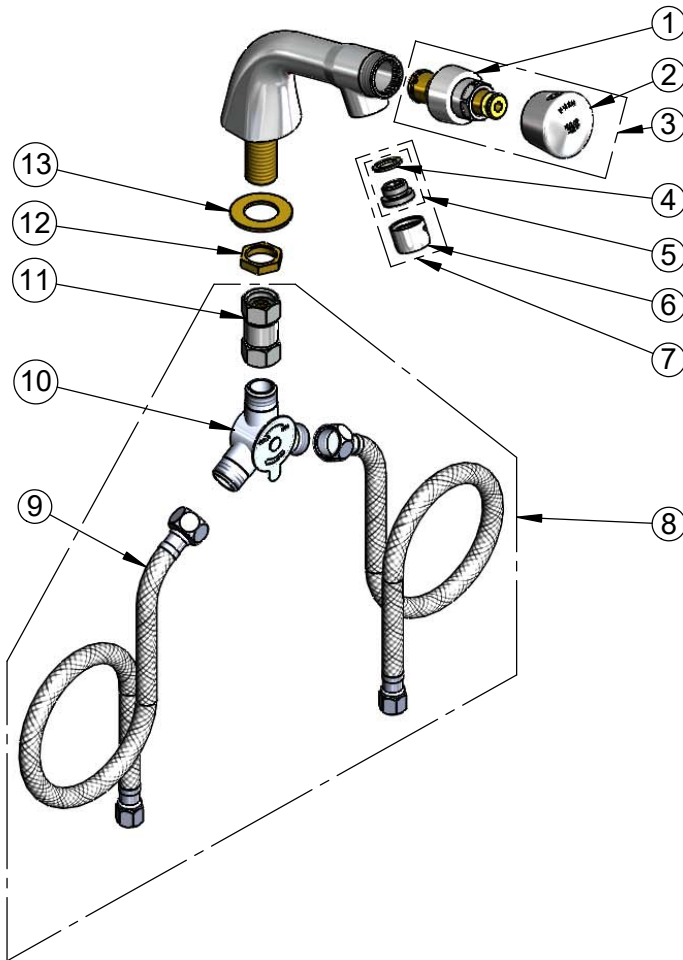
Model No.

**B-0807**

Item No.

Travelers Rest, SC: 800-476-4103 • Simi Valley, CA: 800-423-0150 • Fax: 864-834-3518 • www.tsbrass.com

ITEM NO.	SALES NO.	DESCRIPTION
1	238A	Push Button Metering Cartridge
2	014193-40	Blank Push Cap Assembly
3	238AB	Push Button Metering Cartridge w/ Push Button Cap
4	001043-45	Washer
5	044A	3/8" to Aerator Adapter
6	B-0199-01	2.2 GPM Aerator, 55/64-27 UN Female
7	B-0199-02	2.2 GPM Male Aerator, Adaptor & Washer
8	019806-40	Temperature Control Mixing Valve w/ Flexible 3/8" Compression Female Inlets
9	5EF-0005	Supply Hose, 9/16-24 Female x 1/2" NPSM
10	5EF-0006	Mechanical Mixing Valve
11	017506-45	1/2" NPSM Swivel Coupling
12	002954-45	Shank Lock Nut
13	000999-45	Brass Lock Washer



014734-45  
#8 Spanner Bit

**Product Specifications:**

Single Hole, Single Temperature Deck Mount Faucet, Push Button Metering Cartridge, 2.2 GPM Aerator, Temperature Control Mixing Valve w/ Integral Check Valves & 18" Flexible Stainless Steel Supply Hoses w/ 3/8" Compression Female Inlets

**Product Compliance:**

ASME A112.18.1 / CSA B125.1  
NSF 61 - Section 9  
NSF 372 (Low Lead Content)  
ANSI A117.1 (ADA)