

ENDURA® GREASE MANAGEMENT

endura® SENTRY GREASE MONITORING SYSTEM



*Taking the
guesswork
out of
grease
management*

The biggest challenge with any Grease Interceptor is regular maintenance to ensure operation within its rated capacity. Until now this process has been all but guesswork on the part of the restaurant operator, often resulting in the interceptor becoming overloaded and FOG being released to the municipal or private sewer system – the very thing that the interceptor was put in place to prevent.

Using the latest wireless technology

- Sensor located in the GI transmits status to the remote receiver

Recordable Data

- Sentry holds 14 months of rolling data downloadable to your PC, providing a definitive proof of maintenance and compliant operation

User Friendly

- No electrical supply or installation – Sensor and Display operate on AA batteries
- Easy installation, easy setup
- Suitable for use with all full height Endura® Grease Interceptors



FCC ID: S3PCM91



canplas®

www.endurainterceptor.com

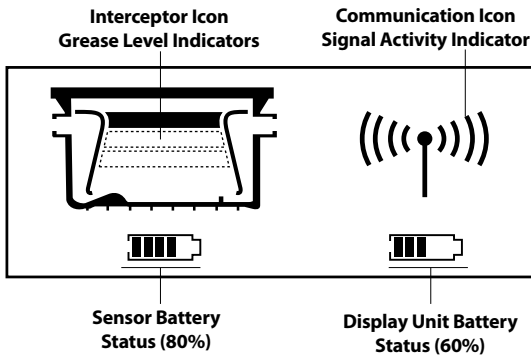
an OAliaxis company



DUAL MONITORING:

The Endura Sentry monitors your grease interceptor in two ways. The first is based on grease accumulation against rated capacity, set using the dipswitches on the Display Unit accordingly. As the FOG (Fat, Oil and Grease) accumulates, the monitor tracks this changing the display and activating the alarm accordingly.

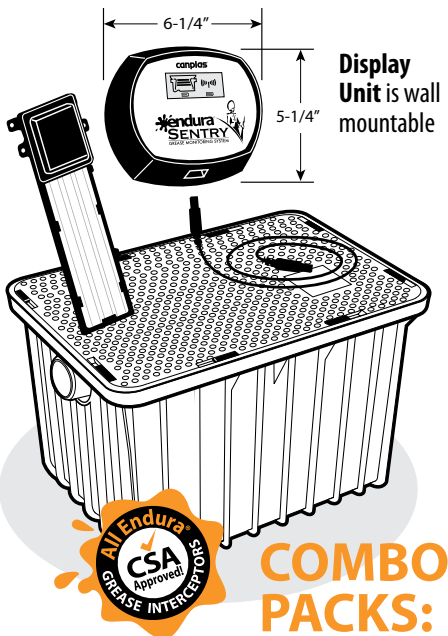
The second means of monitoring is time based. Based on best practice, no grease interceptor should operate for extended periods of time without servicing. Regardless of FOG accumulation Sentry will sound the alarm every 120 days (4 months) indicating the need for servicing. This means that the interceptor will be serviced at least 3 times per 12 month period, or when FOG accumulation dictates.



MONITORING GREASE LEVELS:

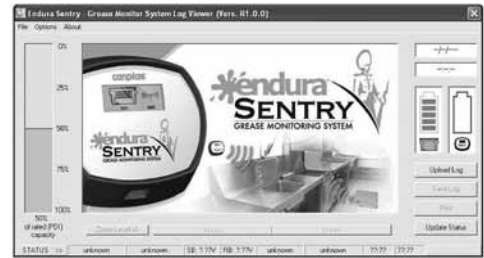
Endura Sentry is supplied complete with all the necessary sundries to complete installation. Both the Sensor and Display unit are supplied with industrial quality AA batteries installed which will draw no charge until the unit is made operational. Battery life expectation for the Sensor is in excess of 5 years and the display unit, depending on frequency of alarm activation and sounding duration, is in excess of 3 years.

The display unit when operational provides quick reference as to battery life remaining and will indicate by the icon flashing when the batteries need to be replaced. In addition the display will also provide indication of the wireless signal status and of course display the current status of the grease interceptor by an increasing number of bars being shown on the interceptor icon. When the interceptor reaches 90% of its rated capacity, the interceptor icon will flash and after 12 consecutive alarm readings, an audible alarm will sound 6 times per hour until the interceptor is serviced.



SENTRY SOFTWARE:

All of the accumulated data about the interceptor operation can be downloaded at any time to a PC running Windows™ Software. This simple user friendly interface allows the data to be both displayed on screen and printed to allow maintenance of hard copy records.



PART #	Description	Molded Sensor Locations	Software Supplied	Notes:
394600	Endura Sentry Grease Monitor	N/A	Yes	All full height Endura models
394615	15GPM GI (2") c/w Sentry Monitor	Yes	Yes	Supplied complete
394620	20GPM GI (2") c/w Sentry Monitor	Yes	Yes	Supplied complete
394622	25GPM GI (2") c/w Sentry Monitor	Yes	Yes	Supplied complete
394625	25GPM GI (3") c/w Sentry Monitor	Yes	Yes	Supplied complete
394633	35GPM GI (3") c/w Sentry Monitor	No*	Yes	Supplied complete
394634	35GPM GI (4") c/w Sentry Monitor	No*	Yes	Supplied complete
394653	50GPM GI (3") c/w Sentry Monitor	No*	Yes	Supplied complete
394654	50GPM GI (4") c/w Sentry Monitor	No*	Yes	Supplied complete

When ordering add suffix 'S' for Spigot Flow device or suffix 'T' for threaded Interceptor/Flow control connections.

* Fixings supplied for sensor mounting.

SAMPLE SPECIFICATION:

Contractor will install an injection moulded grease interceptor with a flow rating of _____ GPM, which is to be supplied with a PDI-G102 APPROVED wireless monitoring device that will sound an interceptor servicing alarm based on 1. FOG accumulation against rated flow capacity; or 2. Operational time of the interceptor no greater than 120 days (3 times annually). Said monitoring device will be capable of retaining at least 12 months of operational data which should be downloadable and able to be both easily interpreted and printed to provide the foodservice operator or third party with operational traceability of the grease interceptor.

Canplas Industries Ltd.
P.O. Box 1800, 500 Veterans Drive
Barrie, Ontario, Canada L4M 4V3
Tel: (705) 726-3361
Toll Free: 1-800-461-5300
Fax: (705) 726-2186

Canplas LLC
11402 East 53rd Ave.
Suite 200, Denver, CO, U.S.A. 80239
Tel: (303) 373-1918
Toll Free: 1-888-461-5307
Fax: (303) 373-1923

www.canplasplumbing.com

canplas

an OAliaxis company