



Your Solutions Partner

# Specifications

F.O.B St. Louis, Missouri 63102



**DBC-1**

**AGENCY LISTINGS:**



DUKE MANUFACTURING CO.

2305 N. Broadway

St. Louis, MO 63102

800.735.3853 Toll Free

314.231.5074 Fax

www.dukemfg.com

SS-1038 Proofer Base -1DBC-1

Specification subject to change

Approval Stamp(s):

**PRODUCT INFORMATION:**

PROJECT: \_\_\_\_\_

ITEM: \_\_\_\_\_

QUANTITY: \_\_\_\_\_

**MODEL:**

Duke Baking Centers - DBC-1

Half Size - Electric

- DBC-1                      59-E3 Oven with PFB-1 Proofer Base

**OVEN SECTION:**

- Porcelain interior
- 5 racks/9 rack positions
- Single hinged door/door glass/reversible door hinging

**OVEN CONTROLS:**

- "XX" - Solid state digital time and temperature controls, 12-hour countdown timer, Cook and Hold feature, 2-speed fan, Pulse fan capability
- "ZZ" - 10 programmable menu buttons, 5-rack ID timers, computerized digital time and temperature controls, Cook and Hold feature, 2-speed fan, Pulse Fan capacity

**PROOFER SECTION**

- Stainless steel front, sides, back and top
- Tempered glass on door
- Stainless steel cavity - 8 rack guides/16 racks
- Solid state temperature control
- 1-hour electric dial timer
- Water reservoir

DUKE BAKING CENTERS - DBC-1

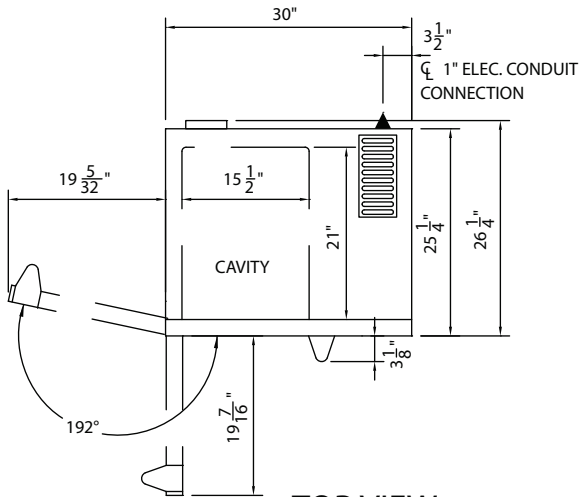
Catalog No. DBC-DBC1

A.I.A. File No. 35-C-13

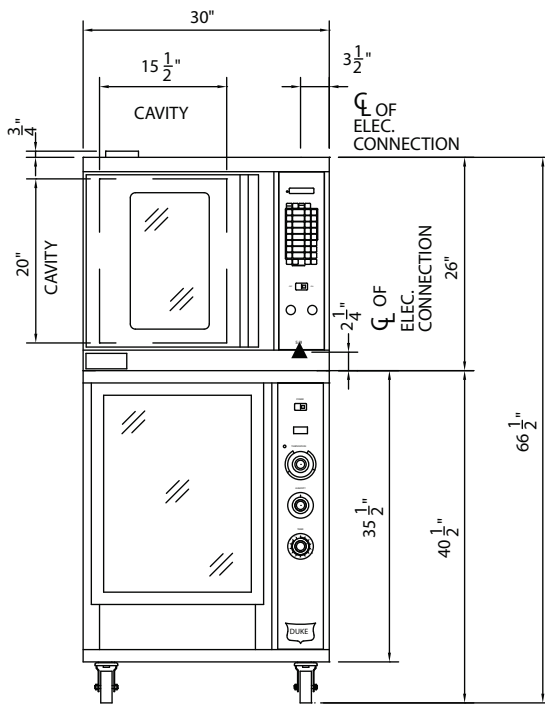
# DUKE BAKING CENTER - DBC-1

A.I.A. File No. 35-C-13

Catalog No. DBC-DBC1



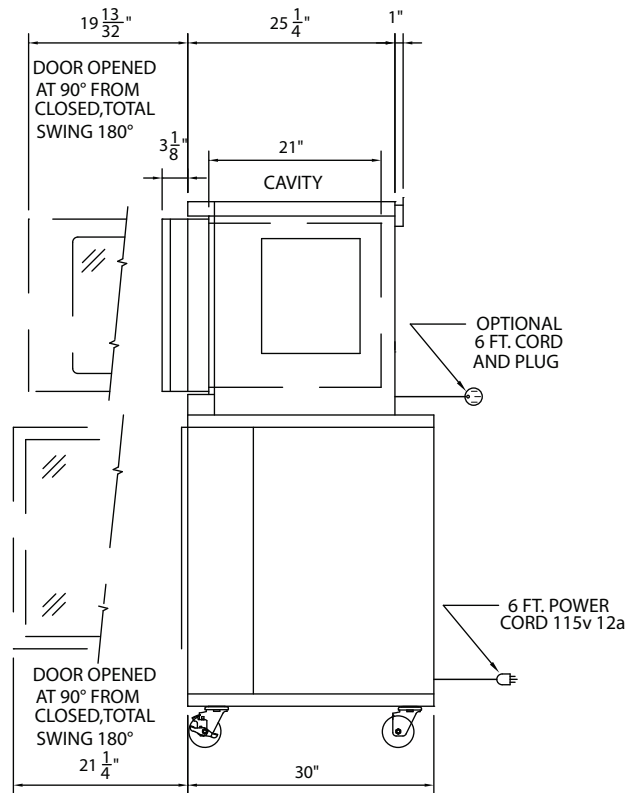
**TOP VIEW**



**FRONT VIEW**

Electrical Specifications			
59-E3	208 Volts	240 Volts	KW
1 Phase	40.0 Amps	35.0 Amps	8.0
3 Phase	35.0 Amps	21.0 Amps	8.0
PFB-1	120 Volts	1545 Watts	
1 Phase	12.9 Amps	n/a	1.5

▲ - Electronic connection point



**RIGHT SIDE VIEW**

**DIMENSIONS:**

**FREIGHT CLASS: 85**

Model	Depth		Width		Height		Cube ft. crated	Weight	
	in	cm	in.	cm	in.	cm		lbs	kg
59-E3	25-1/4	64.1	30	76.2	26	66.0	14.2	265	120.5
PFB-1	30	76.2	30	76.2	40	101.6	24.9	190	86.4

DUKE BAKING CENTERS - DBC-1



**Duke Manufacturing Co.**  
2305 N. Broadway  
St. Louis, MO 63102

Phone: 314-231-1130  
Toll Free: 1-800-735-3853  
Fax: 314-231-5074

www.dukemfg.com