



# AJX Vision Series

Project \_\_\_\_\_  
 Item \_\_\_\_\_  
 Quantity \_\_\_\_\_  
 CSI Section 11400 \_\_\_\_\_  
 Approval \_\_\_\_\_  
 Date \_\_\_\_\_

## Models

- AJX-44     AJX-66 (AJX-44 plus 22" pre-wash)     AJX-80 (AJX-44 plus 36" pre-wash)



## Standard Features

- 25" standard clearance accommodates larger wares, such as sheet pans, mixing bowls, etc.
- Exclusive "Energy Guard" controls
- Fully automatic including auto-fill
- Incoming water-pressure regulator
- Electromechanical controls
- Adjust-A-Peak™ adjustable conveyor speed allows machine to extend wash time and rinse contact for heavy soil conditions
- Self-draining stainless steel wash pump
- Front dress panel
- Stainless steel strainer pans and scrap bucket
- Splash shields
- Strikeplate table-limit switch
- Externally operated drain lever
- Adjustable bullet feet
- Stainless steel frame and legs
- Exhaust vent fan control
- 18kw wash tank heater

## Mandatory Specs

Specify tank heat:

- Electric     Steam  
 Voltage (specify) \_\_\_\_\_

Specify model type:

- High temperature with Energy Star® indicator to adjust conveyor speed  
 Chemical sanitizing with Energy Star® indicator to adjust conveyor speed

Specify direction of operation:

- Left to right or  Right to left

Specify booster heater size:

- 40°F (4°C) Rise (18kW) or  
 70°F (21°C) Rise (30kW)

## Optional Features

- 23" (584 mm) Unhooded side loader  
 23" (584 mm) Hooded side loader  
 30" (762 mm) Unhooded side loader  
 30" (762 mm) Hooded side loader  
 Flanged feet  
 Blower dryer  
 Vent cowl collars (set of 2)  
 Low Hood with 15kW tank heater

## Accessories

- 36 Compartment rack 4-1/8" tall (105 mm), 5-5/8" tall (143 mm), 7" tall (178 mm)  
 Combination rack  
 Peg rack  
 Sheet pan rack  
 Drain quench system  
 Scaltrol  
 Steam booster heater  
 Water hammer arrestor  
 Prison package

## Specifications

High-temperature model uses 0.68 gallons (2.57 liters) per rack. Chemical-sanitizing model uses 0.78 gallons (2.95 liters) per rack

High-temperature model cleans 225 racks per hour. Chemical-sanitizing model cleans 209 racks per hour

AJX-66: 22" (559 mm) pre-wash section has 2 upper and 1 lower pre-wash arms

AJX-80: 36" (915 mm) pre-wash section has 3 upper and 2 lower pre-wash arms

8" (203 mm) splash shields on both wash and rinse ends

Standard 25" (635 mm) chamber height clearance accommodates larger wares

18" (457 mm) wash section with an 18" (457 mm) separation between wash and rinse

Stainless steel construction



**SHIPPING ADDRESS**  
 6209 North U.S. Highway 25E  
 Gray, KY 40734

**MAILING ADDRESS**  
 P. O. Box 1060  
 Barbourville, KY 40906

**Tel: 606-523-9795**  
**Tel: 1-888-800-5672**  
**Fax: 606-523-1799**

**www.jacksonmsc.com**  
**E-mail: customerservice@jacksonmsc.com**  
**07610-003-60-58 (10/08)**



# AJX-44 Vision Series - Electric

Left to Right

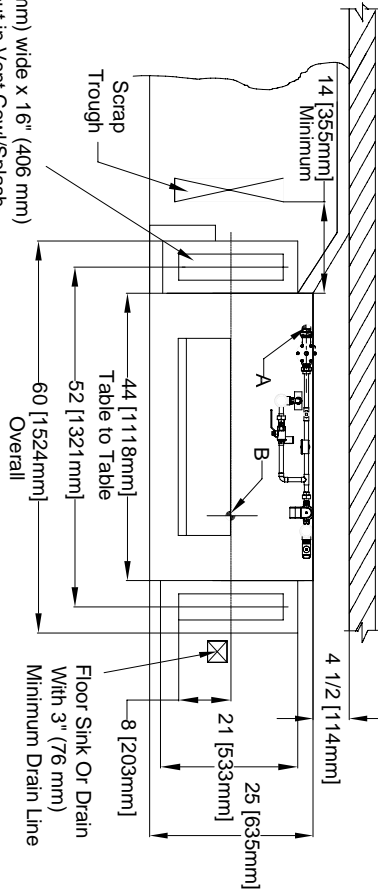
## Left to Right High Hood

Note: *Low Hood dimensions are in bold italics*

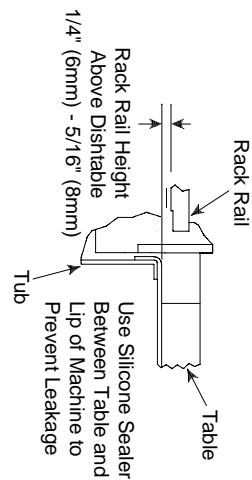
- Legend
- A - Machine water inlet 1/2" NPT, 180°F Hi-temp, 140°F Low-temp minimum
  - B - Electrical connection
  - C - Drain connection 1-1/2" NPT
  - D - Vent collar - Optional
  - E - Vent cowl standard

Note: All vertical dimensions are +/- 1/2" from floor due to adjustable bullet feet.

4" (102 mm) wide x 16" (406 mm) long cutout in Vent Cowl/Splash Shield: Shipped with Cover Plate.



## Recommended Table Fabrication

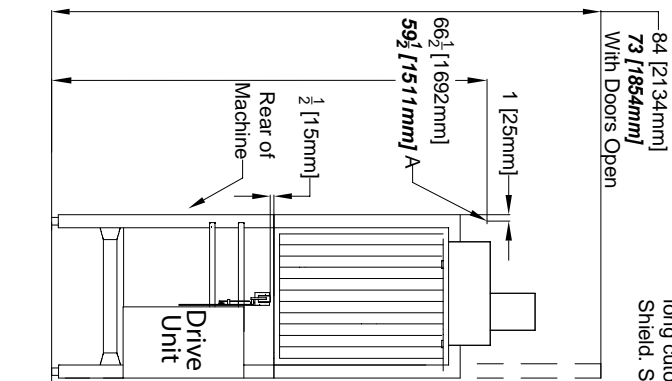


Rack Rail Height Above Dishtable 1/4" (6mm) - 5/16" (8mm)

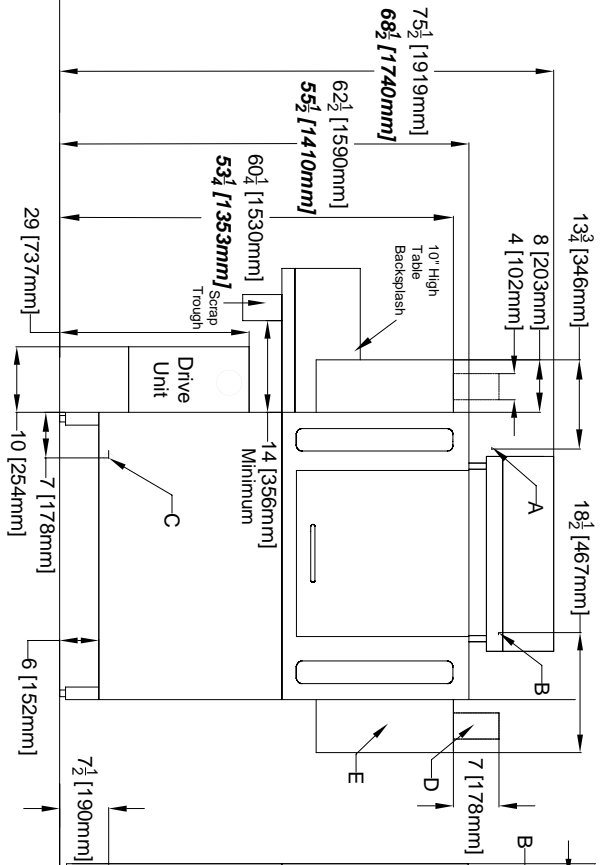
Note: Tub Will Accept a Table Flange Up to 24 7/8" (632 mm)



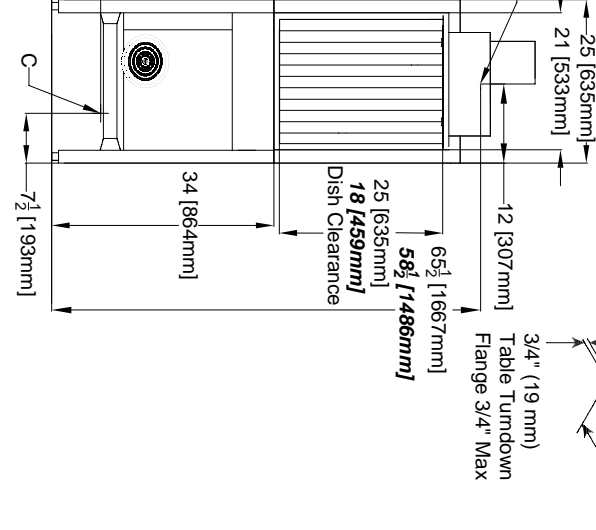
## Left Side



## Front View



## Right Side



# AJX-44 Vision Series - Electric

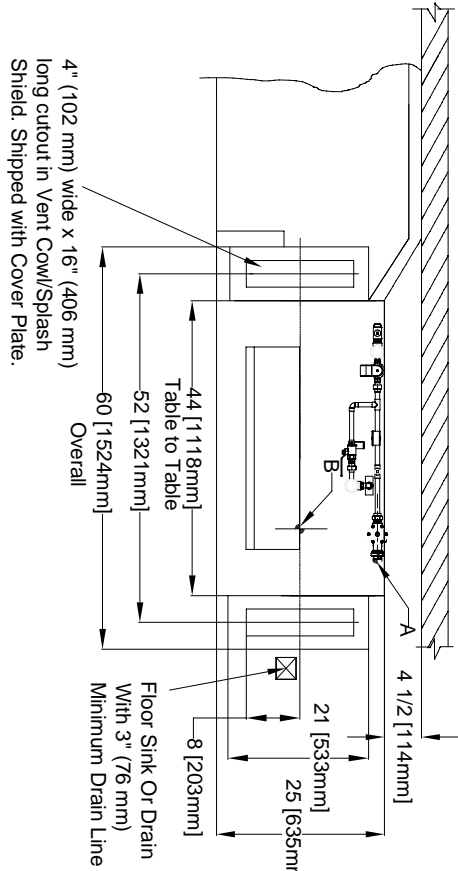
Right to Left

## Right to Left High Hood

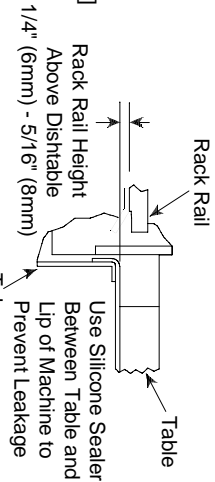
Note: *Low Hood dimensions are in bold italics*

- Legend
- A - Machine water inlet 1/2" NPT, 180°F Hi-temp, 140°F Low-temp minimum
  - B - Electrical connection
  - C - Drain connection 1-1/2" NPT
  - D - Vent collar - Optional
  - E - Vent cowl standard

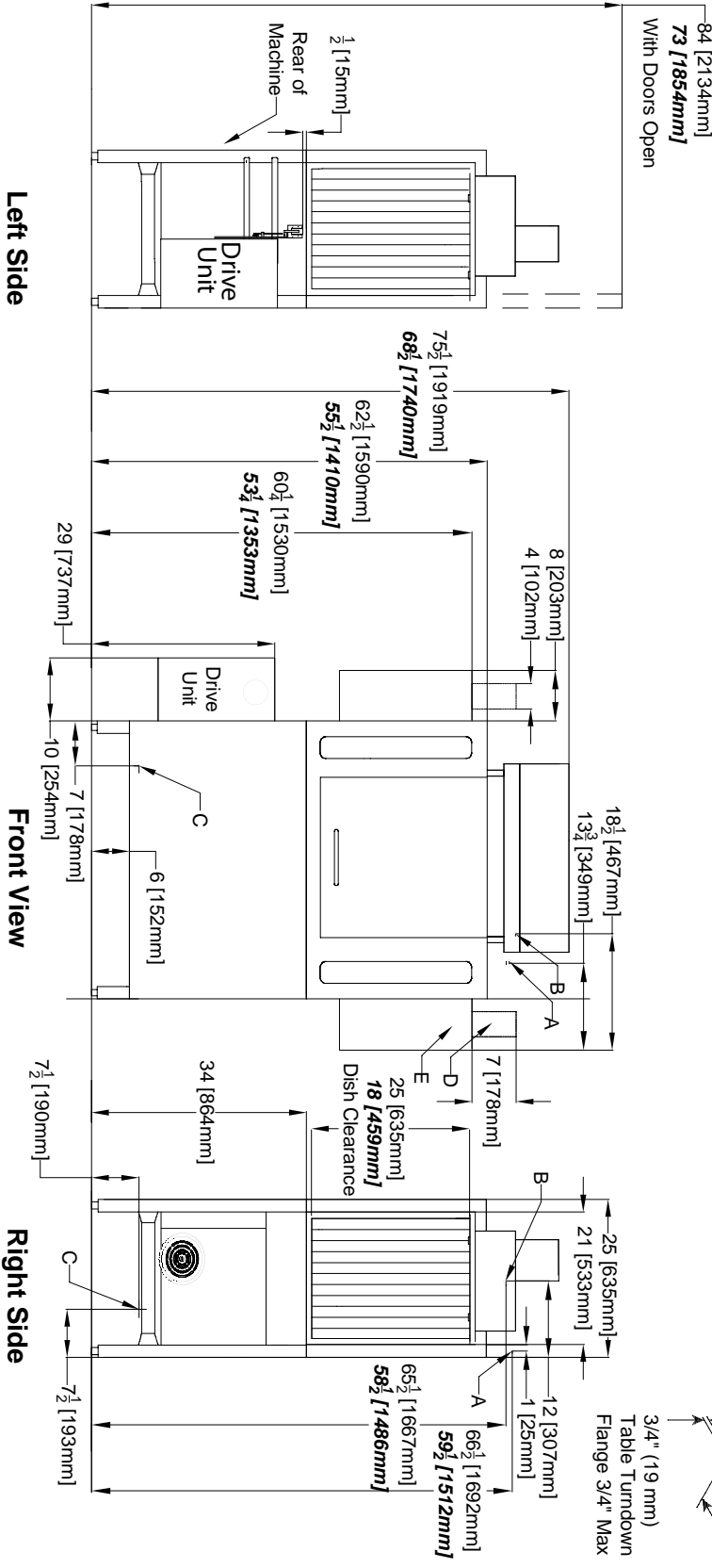
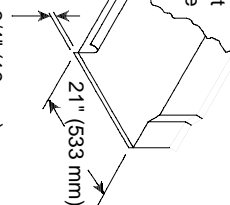
Note: All vertical dimensions are +/- 1/2" from floor due to adjustable bullet feet.



## Recommended Table Fabrication



Note: Tub Will Accept a Table Flange Up to 24 7/8" (632 mm)



# AJX-66 Vision Series - Electric

Left to Right

## Left to Right High Hood

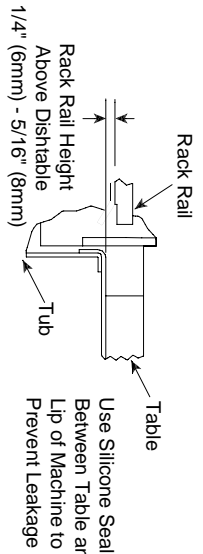
Note: *Low Hood dimensions are in bold italics*

### Legend

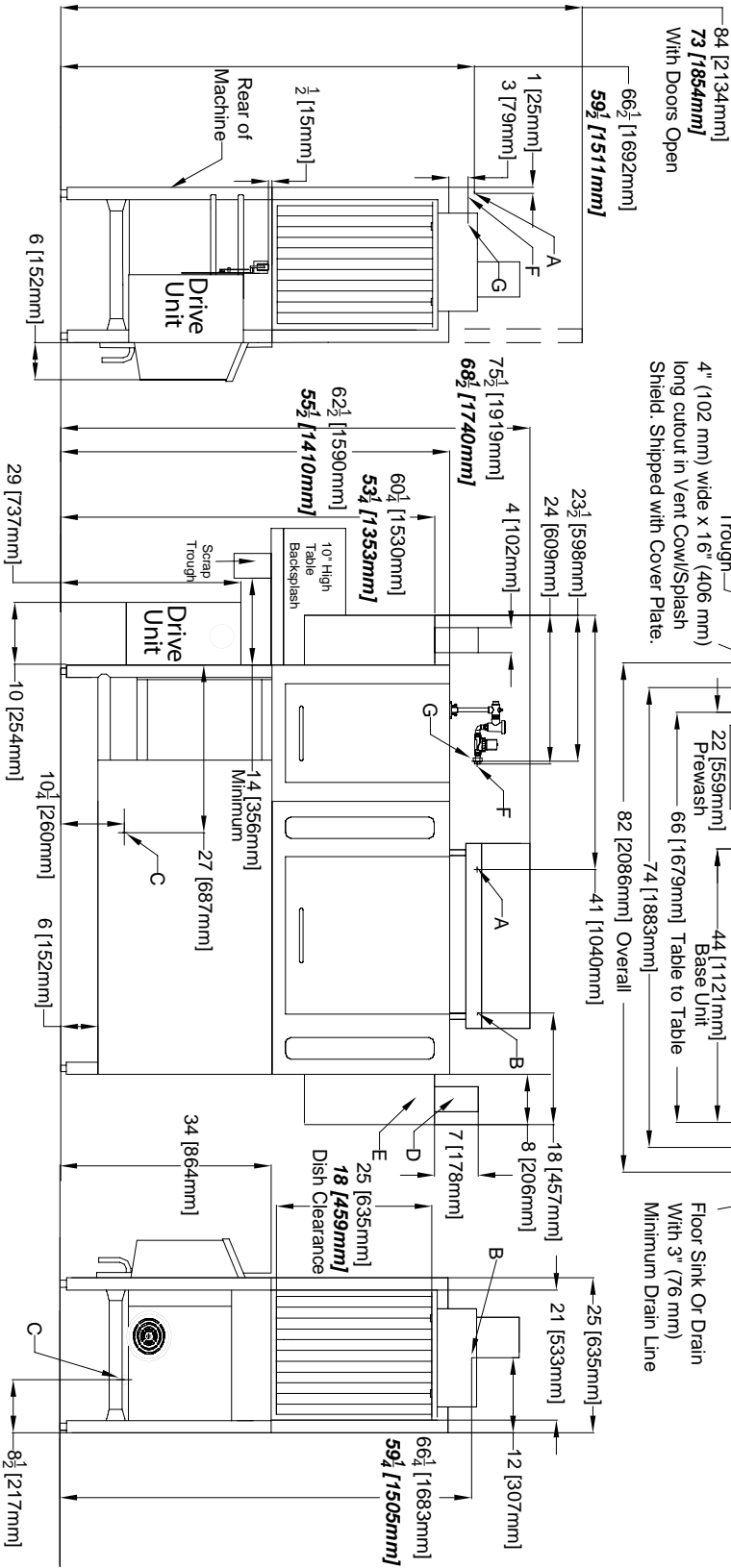
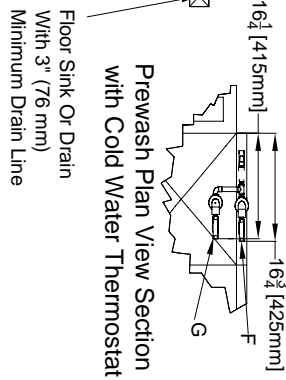
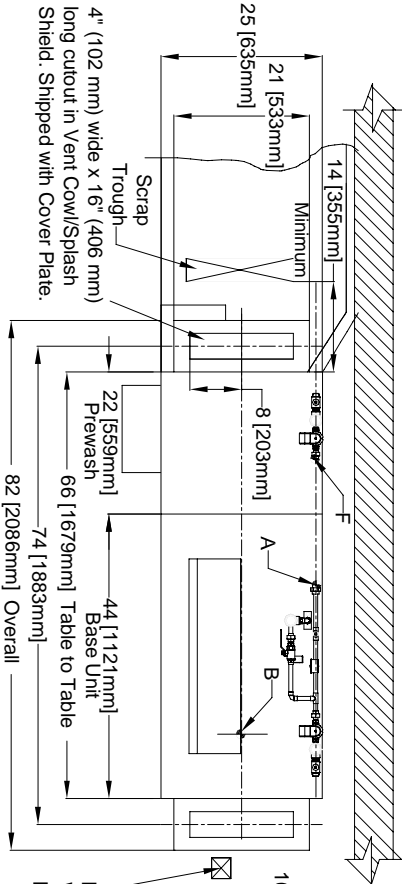
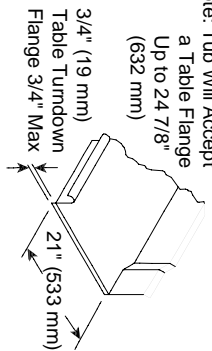
- A - Machine water inlet 1/2" NPT, 180°F Hi-temp, 140°F Low-temp minimum
- B - Electrical connection
- C - Drain connection 1-1/2" NPT
- D - Vent collar - Optional
- E - Vent cowl standard
- F - Prewash water inlet 3/4" NPT 110°F - 140°F
- G - Cold water thermostat plumbing connection 3/4" NPT - Optional

Note: All vertical dimensions are +/- 1/2" from floor due to adjustable bullet feet.

## Recommended Table Fabrication



Note: Tub Will Accept a Table Flange Up to 24 7/8" (632 mm)



Left Side

Front View

Right Side

# AJX-66 Vision Series - Electric

Right to Left

## Right to Left High Hood

Note: Low Hood dimensions are in *bold italics*

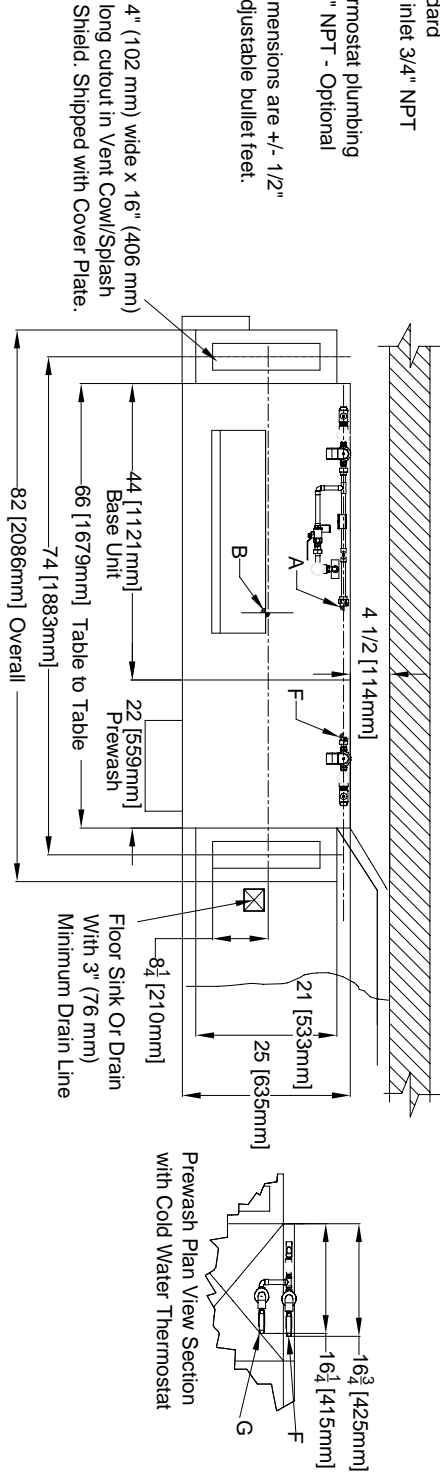
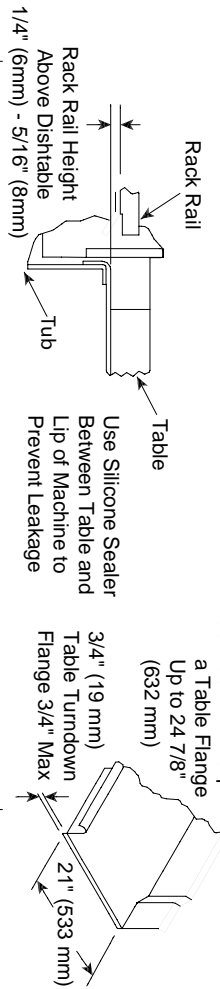
### Legend

- A - Machine water inlet 1/2" NPT, 180°F Hi-temp, 140°F Low-temp minimum
- B - Electrical connection
- C - Drain connection 1-1/2" NPT
- D - Vent collar - Optional
- E - Vent cowl standard
- F - Prewash water inlet 3/4" NPT 110°F-140°F
- G - Cold water thermostat plumbing connection 3/4" NPT - Optional

Note: All vertical dimensions are +/- 1/2" from floor due to adjustable bullet feet.

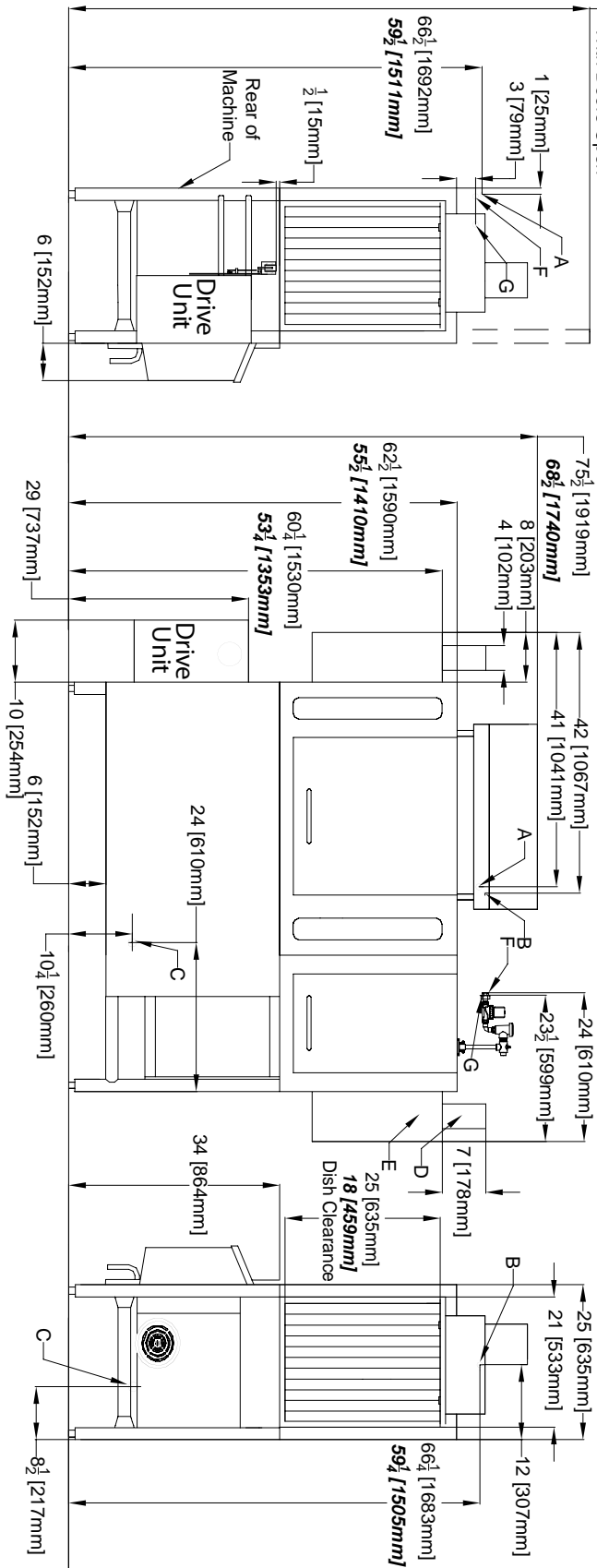
## Recommended Table Fabrication

Note: Tub Will Accept a Table Flange Up to 24 7/8" (632 mm)



4" (102 mm) wide x 16" (406 mm) long cutout in Vent Cowl/Splash Shield. Shipped with Cover Plate.

Prewash Plan View Section with Cold Water Thermostat



# AJX-80 Vision Series - Electric

Left to Right

## Left to Right High Hood

Note: *Low Hood dimensions are in bold italics*

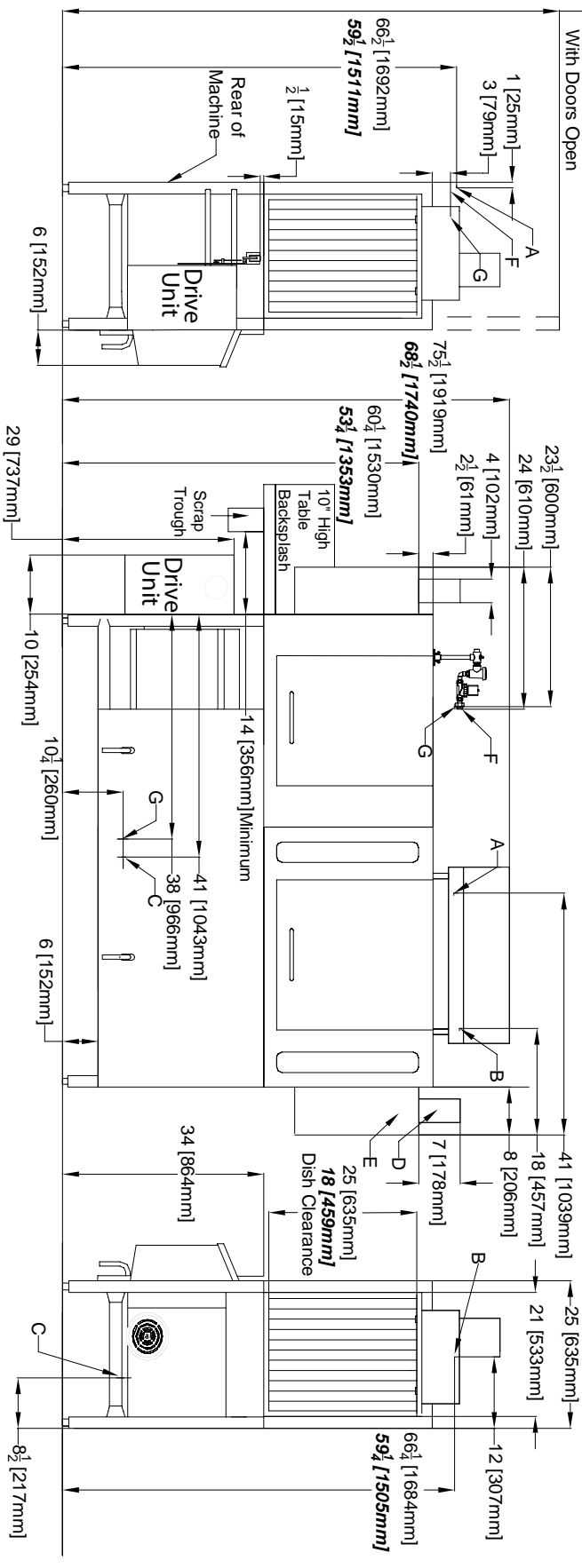
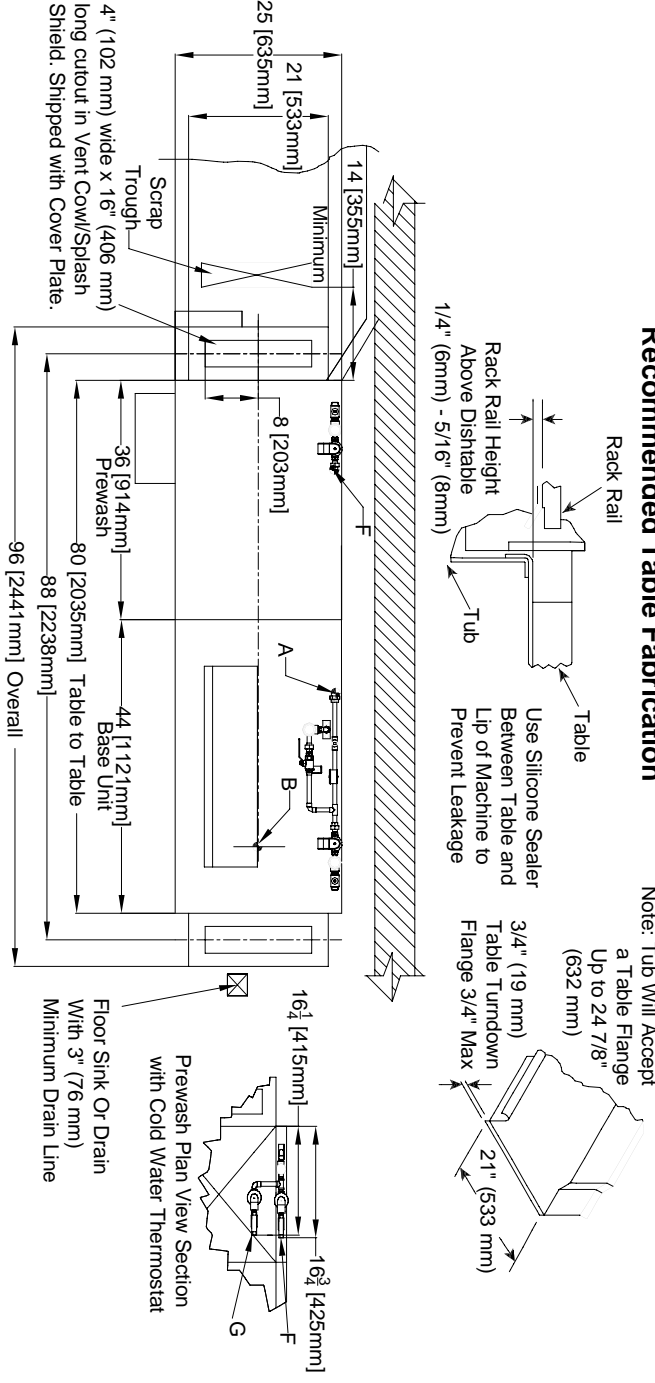
### Legend

- A - Machine water inlet 1/2" NPT, 180°F Hi-temp, 140°F Low-temp minimum
- B - Electrical connection
- C - Drain connection 1-1/2" NPT
- D - Vent collar - Optional
- E - Vent cowl standard
- F - Prewash water inlet 3/4" NPT 110°F-140°F
- G - Cold water thermostat plumbing connection 3/4" NPT - Optional

Note: All vertical dimensions are +/- 1/2" from floor due to adjustable bullet feet.

## Recommended Table Fabrication

Note: Tub Will Accept a Table Flange Up to 24 7/8" (632 mm)



# AJX-80 Vision Series - Electric

Right to Left

## Right to Left High Hood

Note: Low Hood dimensions are in bold italics

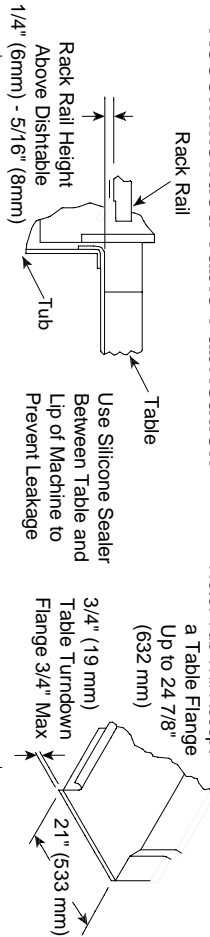
### Legend

- A - Machine water inlet 1/2" NPT, 180°F Hi-temp, 140°F Low-temp minimum
- B - Electrical connection
- C - Drain connection 1-1/2" NPT
- D - Vent collar - Optional
- E - Vent cowli standard
- F - Prewash water inlet 3/4" NPT 110°F-140°F
- G - Cold water thermostat plumbing connection 3/4" NPT - Optional

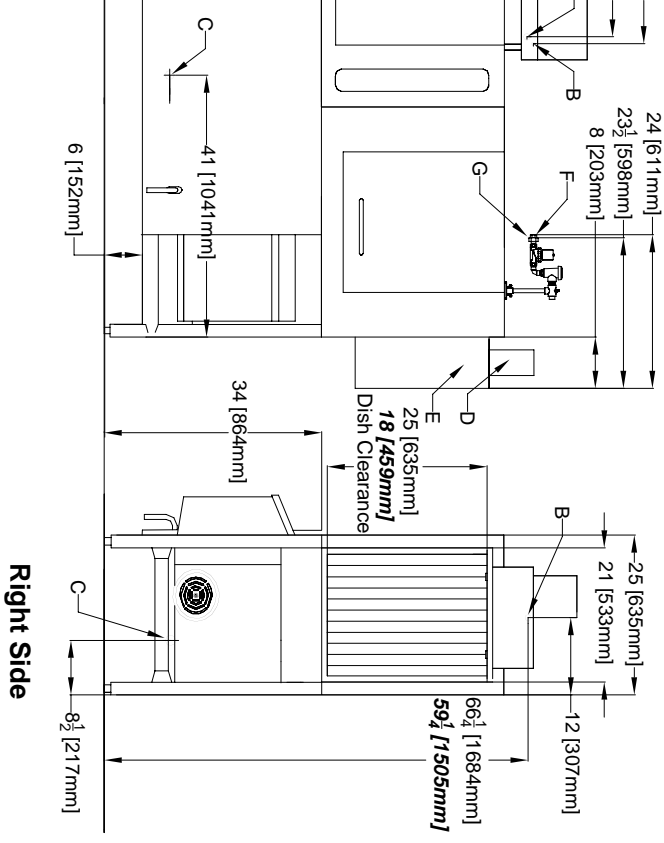
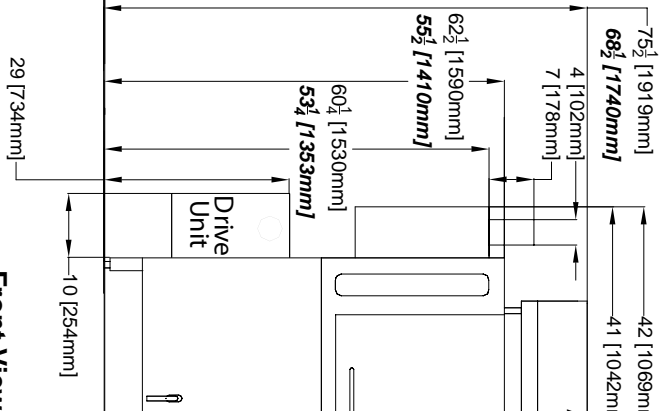
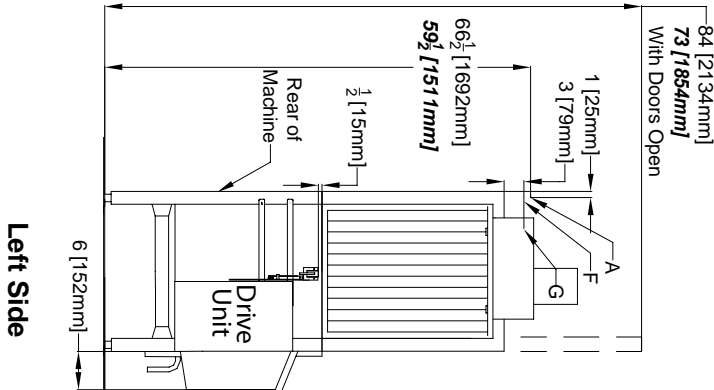
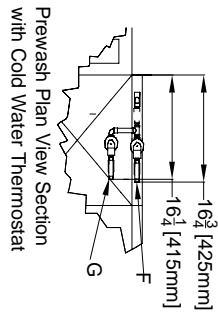
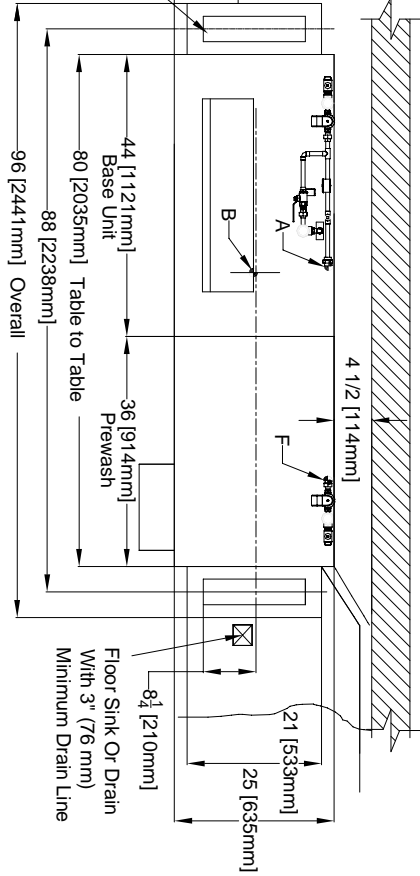
Note: All vertical dimensions are +/- 1/2" from floor due to adjustable bullet feet.

## Recommended Table Fabrication

Note: Tub Will Accept a Table Flange Up to 24 7/8" (632 mm)



4" (102 mm) wide x 16" (406 mm) long cutout in Vent Cowli/Splash Shield. Shipped with Cover Plate.



# AJX-44 Vision Series - Steam

Left to Right

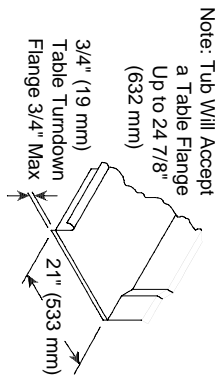
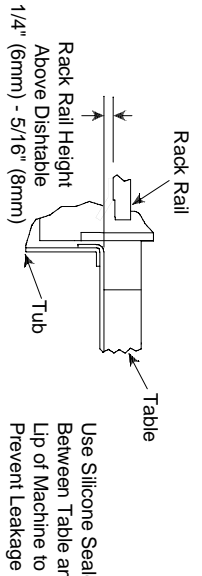
## Left to Right High Hood

*Note: Low Hood dimensions are in bold italics*

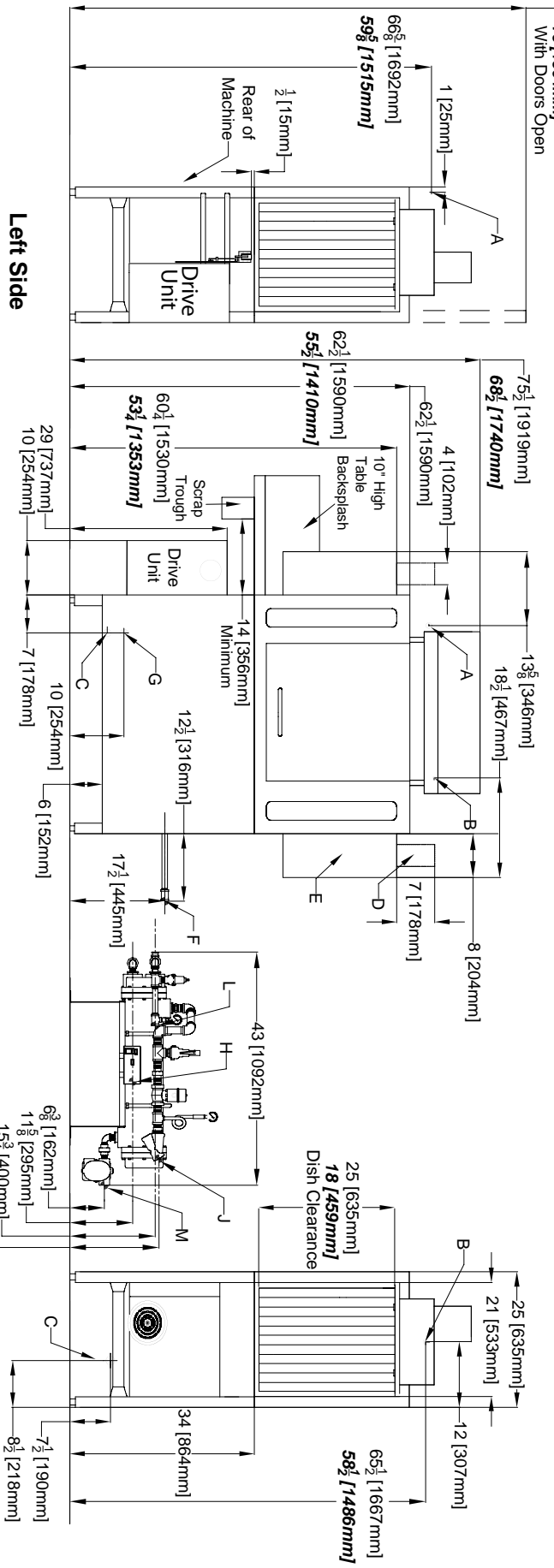
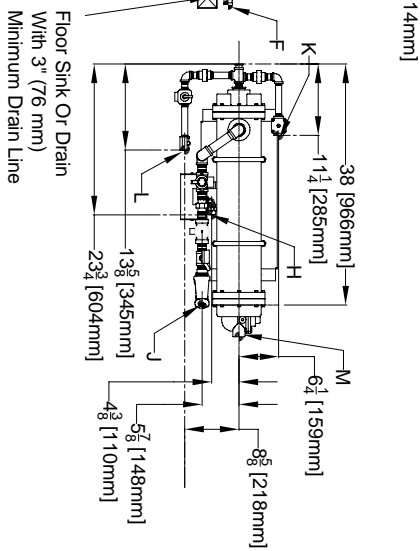
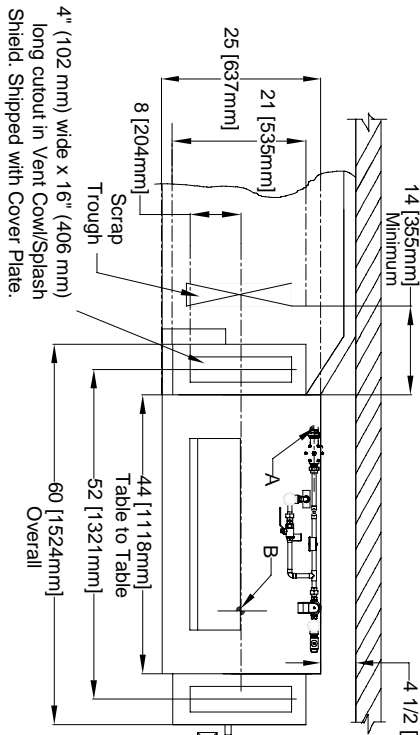
- Legend**
- A - Machine water inlet 1/2" NPT 180°F Hi-temp, 140°F Low-temp minimum
  - B - Electrical connection
  - C - Drain connection 1-1/2" NPT
  - D - Vent collar - Optional
  - E - Vent cowl standard
  - F - 3/4" NPT Steam connection
  - G - 3/4" NPT Condensate return
  - H - Steam electrical connection
  - J - 1" NPT Steam connection
  - K - 3/4" Condensate connection
  - L - 3/4" NPT Incoming 110°F water connection
  - M - 3/4" NPT 180°F water to dishmachine.

*Note:* All vertical dimensions are +/- 1/2" from floor due to adjustable buller feet.

## Recommended Table Fabrication



*Note:* Tub Will Accept a Table Flange Up to 24 7/8" (632 mm)





# AJX-44 Vision Series - Steam

Right to Left

## Right to Left High Hood

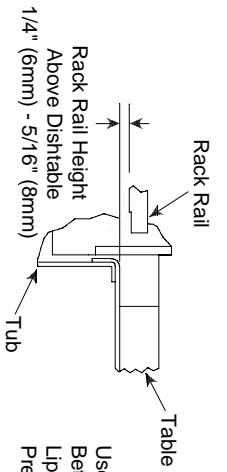
Note: Low Hood dimensions are in bold italics

### Legend

- A - Machine water inlet 1/2" NPT 180°F Hi-temp, 140°F Low-temp minimum
- B - Electrical connection
- C - Drain connection 1-1/2" NPT
- D - Vent collar - Optional
- E - Vent cowl standard
- F - 3/4" NPT Steam connection
- G - 3/4" NPT Condensate return
- H - Steam electrical connection
- J - 1" NPT Steam connection
- K - 3/4" Condensate connection
- L - 3/4" NPT Incoming 110°F water connection
- M - 3/4" NPT 180°F water to dishmachine.

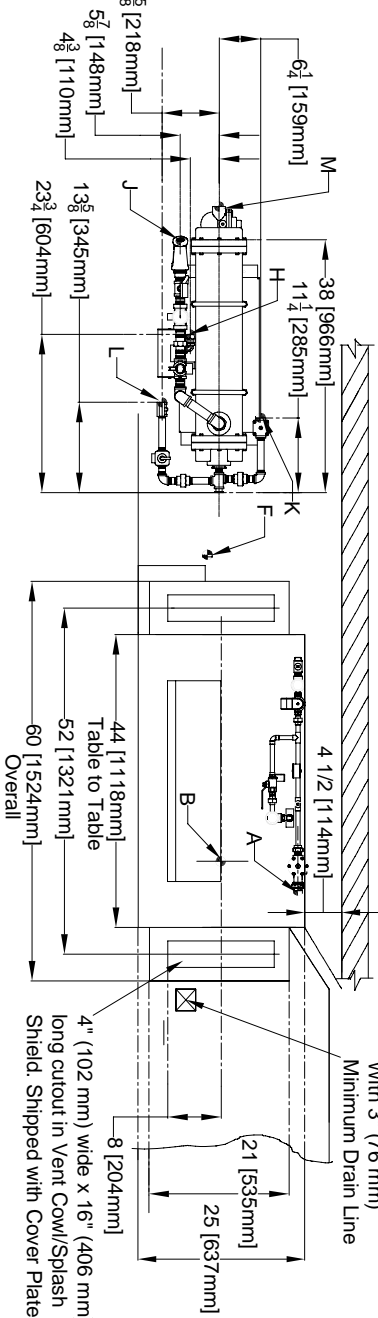
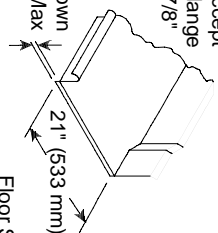
Note: All vertical dimensions are +/- 1/2" from floor due to adjustable bullet feet.

## Recommended Table Fabrication

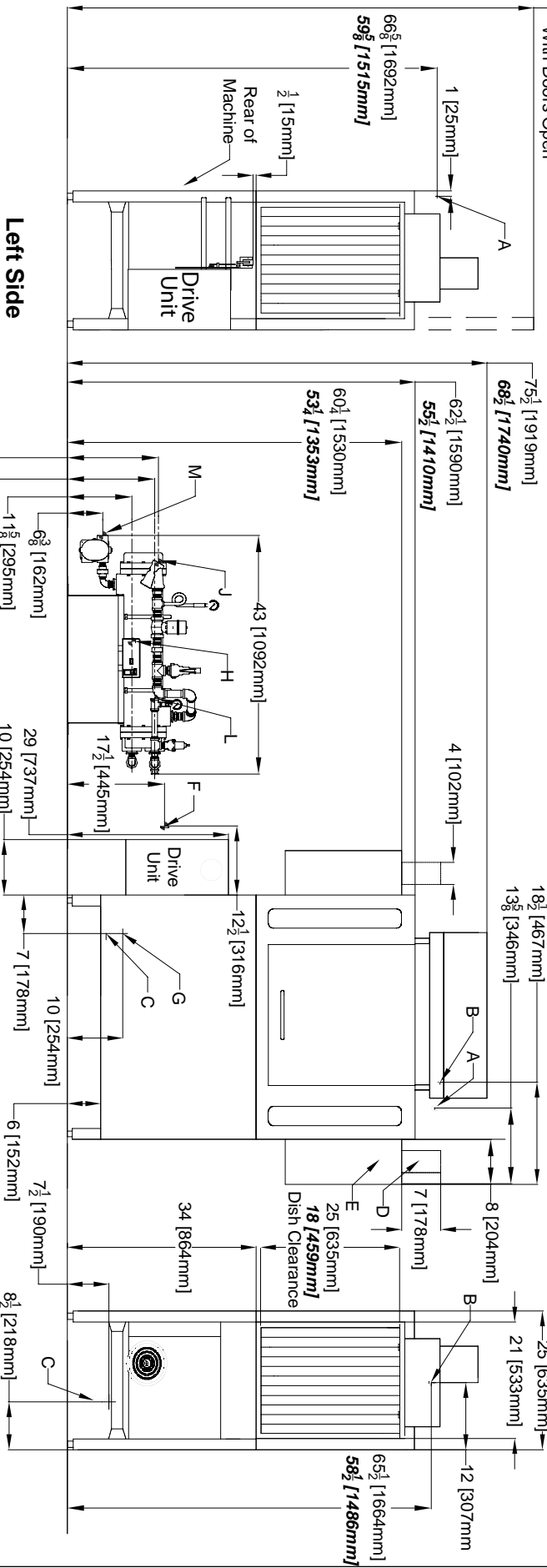


Use Silicone Sealer Between Table and Lip of Machine to Prevent Leakage

Note: Tub Will Accept a Table Flange Up to 24 7/8" (632 mm)

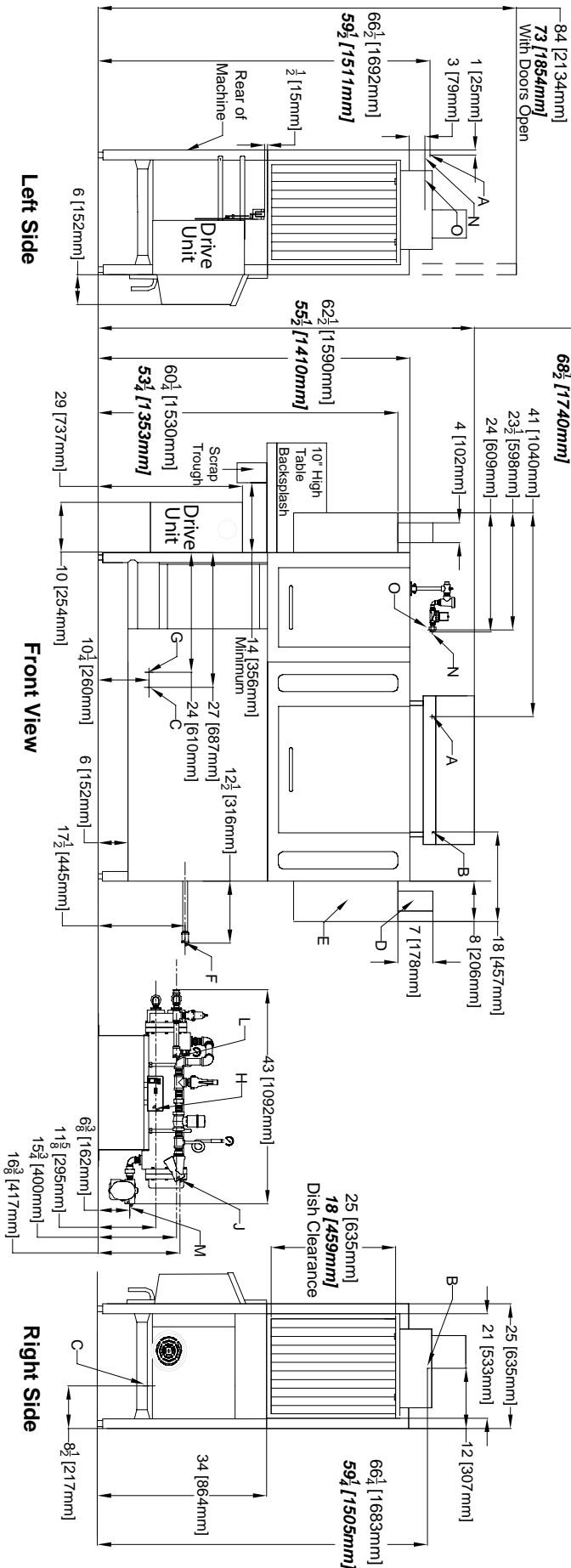


4" (102 mm) wide x 16" (406 mm) long cutout in Vent Cowl/Splash Shield. Shipped with Cover Plate.



# AJX-66 Vision Series - Steam

Left to Right



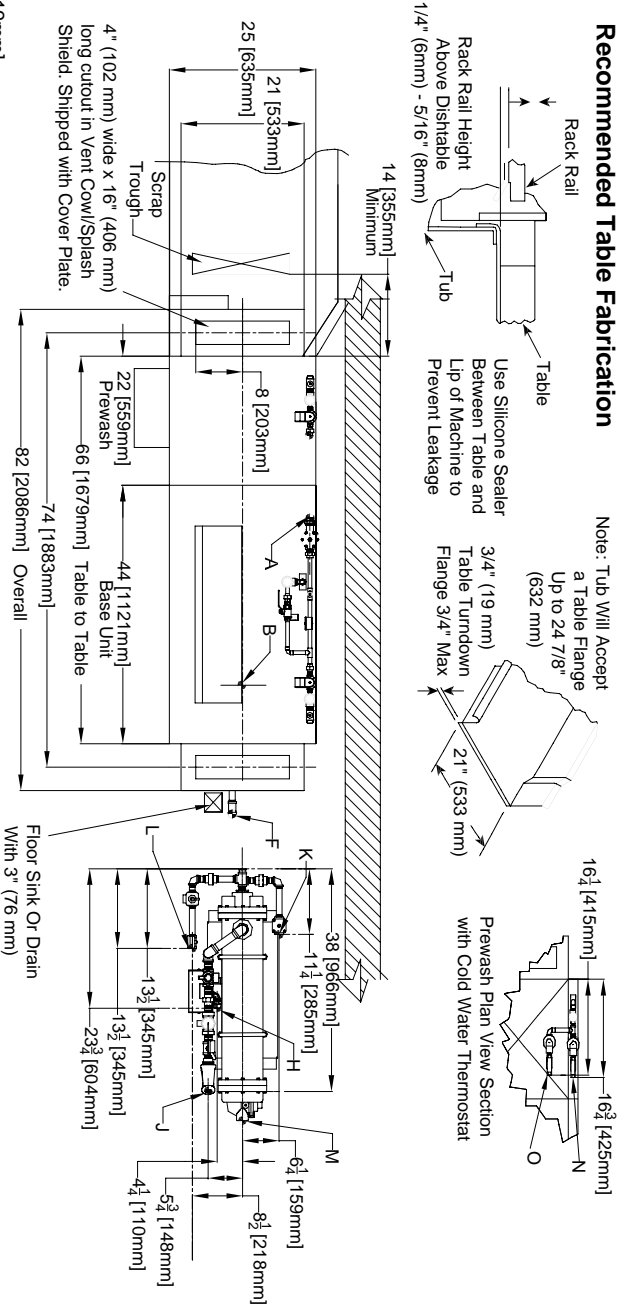
### Left to Right High Hood

**Note: Low Hood dimensions are in bold italics**

**Legend**

- A - Machine water inlet 1/2" NPT 180°F Hi-temp 140°F Low-temp minimum
- B - Electrical connection
- C - Drain connection 1-1/2" NPT
- D - Vent collar - Optional
- E - Vent cowl standard
- F - 3/4" NPT Steam connection
- G - 3/4" NPT Condensate return
- H - Steam electrical connection
- J - 1" NPT Steam connection
- K - 3/4" Condensate connection
- L - 3/4" NPT Incoming 110°F water connection
- M - 3/4" NPT 180°F water to dishmachine.
- N - Prewash water inlet 3/4" NPT 110°F-140°F
- O - Cold water thermostat plumbing connection 3/4" NPT - Optional

**Note:** All vertical dimensions are +/- 1/2" from floor due to adjustable bullet feet.



# AJX-66 Vision Series - Steam

Right to Left

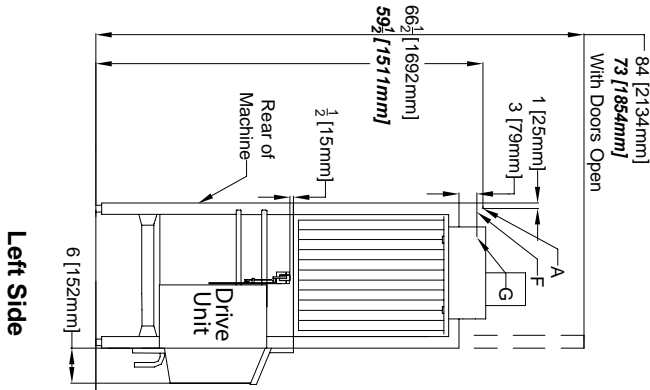
## Right to Left High Hood

**Note: Low Hood dimensions are in bold italics**

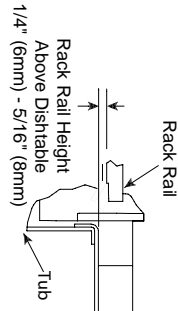
### Legend

- A - Machine water inlet 1/2" NPT, 180°F Hi-temp, 140°F Low-temp minimum
- B - Electrical connection
- C - Drain connection 1-1/2" NPT
- D - Vent collar - Optional
- E - Vent cowl standard
- F - Prewash water inlet 3/4" NPT 110°F-140°F
- G - Cold water thermostat plumbing connection 3/4" NPT - Optional
- H - Steam electrical connection
- J - 1" NPT Steam connection
- K - 3/4" Condensate connection
- L - 3/4" NPT Incoming 110°F water connection
- M - 3/4" NPT 180°F water to dishmachine.

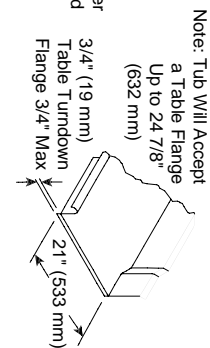
**Note:** All vertical dimensions are +/- 1/2" from floor due to adjustable bullet feet.



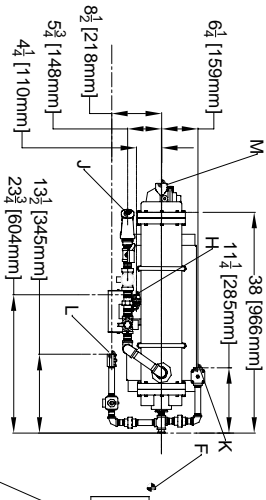
## Recommended Table Fabrication



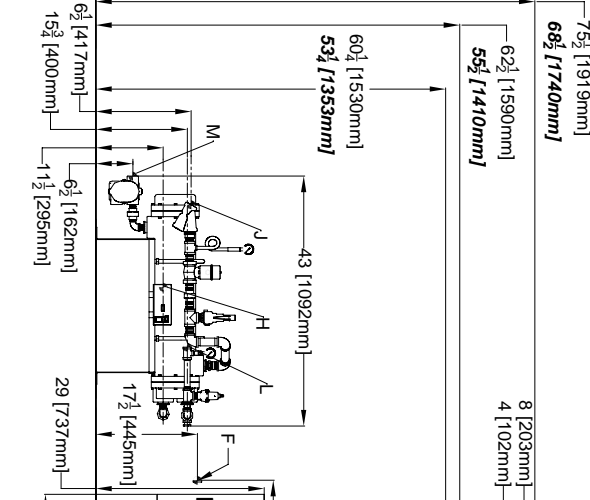
Use Silicone Sealer Between Table and Lip of Machine to Prevent Leakage



Prewash Plan View Section with Cold Water Thermostat



4" (102 mm) wide x 16" (406 mm) long cutout in Vent Cowl/Splash Shield. Shipped with Cover Plate.



## Front View

## Right Side



# AJX-80 Vision Series - Steam

## Left to Right High Hood

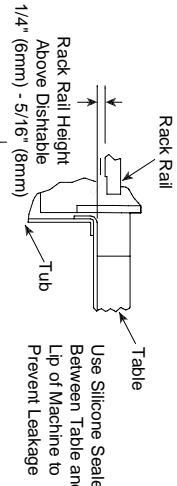
Note: *Low Hood dimensions are in bold italics*

### Legend

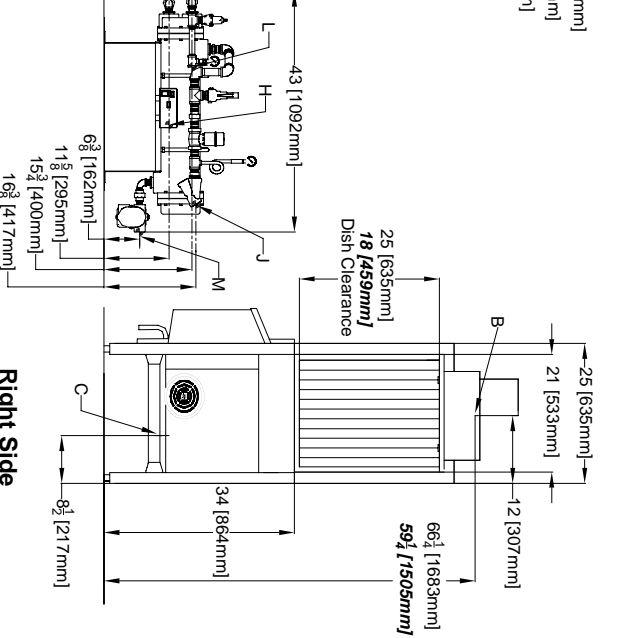
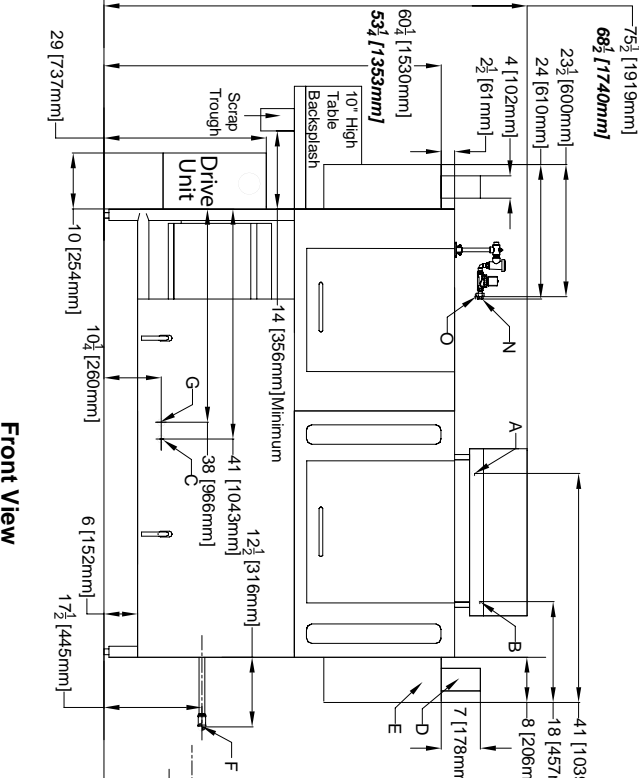
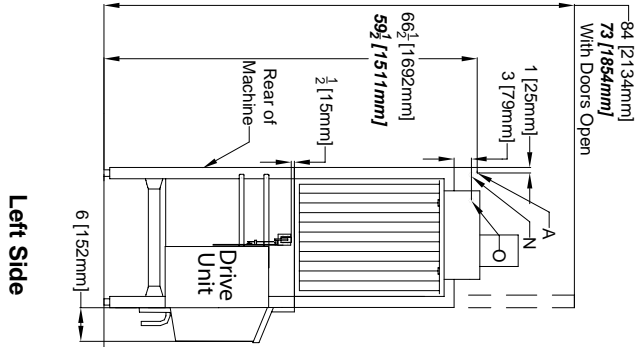
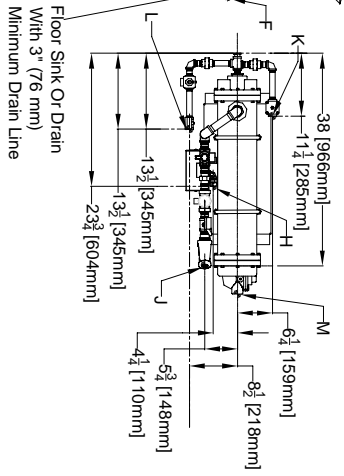
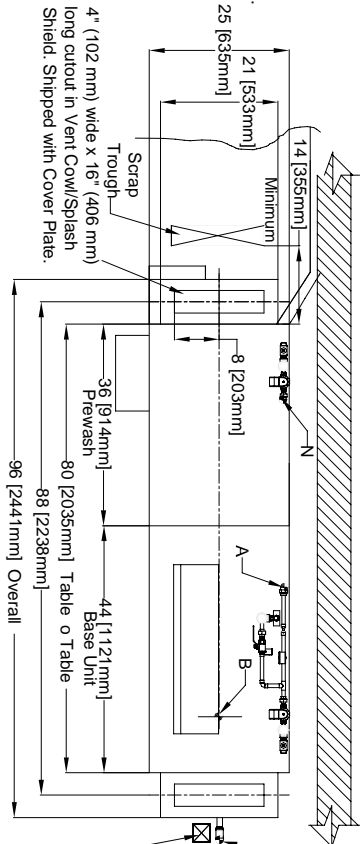
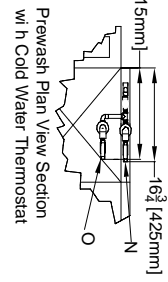
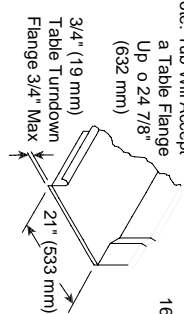
- A - Machine water inlet 1/2" NPT 180°F
- Htemp, 140°F Low-temp minimum
- B - Electrical connection
- C - Drain connection 1-1/2" NPT
- D - Vent collar - Optional
- E - Vent cow standard
- F - 3/4" NPT Steam connection
- G - 3/4" NPT Condensate return
- H - Steam electrical connection
- J - 1" NPT Steam connection
- K - 3/4" Condensate connection
- L - 3/4" NPT Incoming 110°F water connection
- M - 3/4" NPT 180°F water to dishmachine.
- N - Prewash water inlet 3/4" NPT 110°F - 140°F
- O - Cold water thermostat plumbing connection 3/4" NPT - Optional

Note: All vertical dimensions are +/- 1/2" from floor due to adjustable bullet feet.

## Recommended Table Fabrication



Note: Tub Will Accept a Table Flange Up to 24 7/8" (632 mm)



Left to Right

Left Side

Front View

Right Side

Right to Left

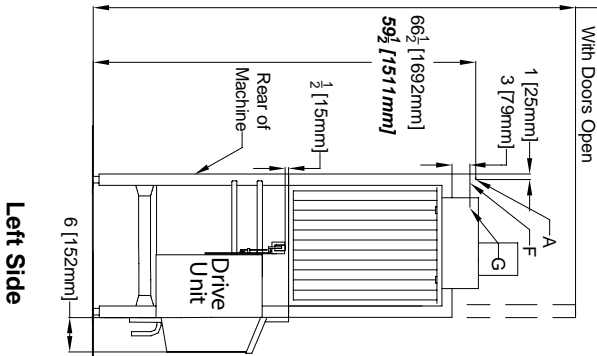
## Right to Left High Hood

Note: **Low Hood dimensions are in bold italics**

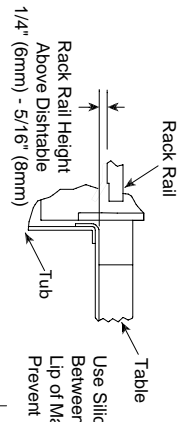
### Legend

- A - Machine water inlet 1/2" NPT, 180°F Hi-temp, 140°F Low-temp minimum
- B - Electrical connection
- C - Drain connection 1-1/2" NPT
- D - Vent collar - Optional
- E - Vent cowl standard
- F - Prewash water inlet 3/4" NPT 110°F-140°F
- G - Cold water thermostat plumbing connection 3/4" NPT - Optional
- H - Steam electrical connection
- J - 1" NPT Steam connection
- K - 3/4" Condensate connection
- L - 3/4" NPT Incoming 110°F water connection
- M - 3/4" NPT 180°F water to dishmachine.

Note: All vertical dimensions are +/- 1/2" from floor due to adjustable bullet feet.



## Recommended Table Fabrication

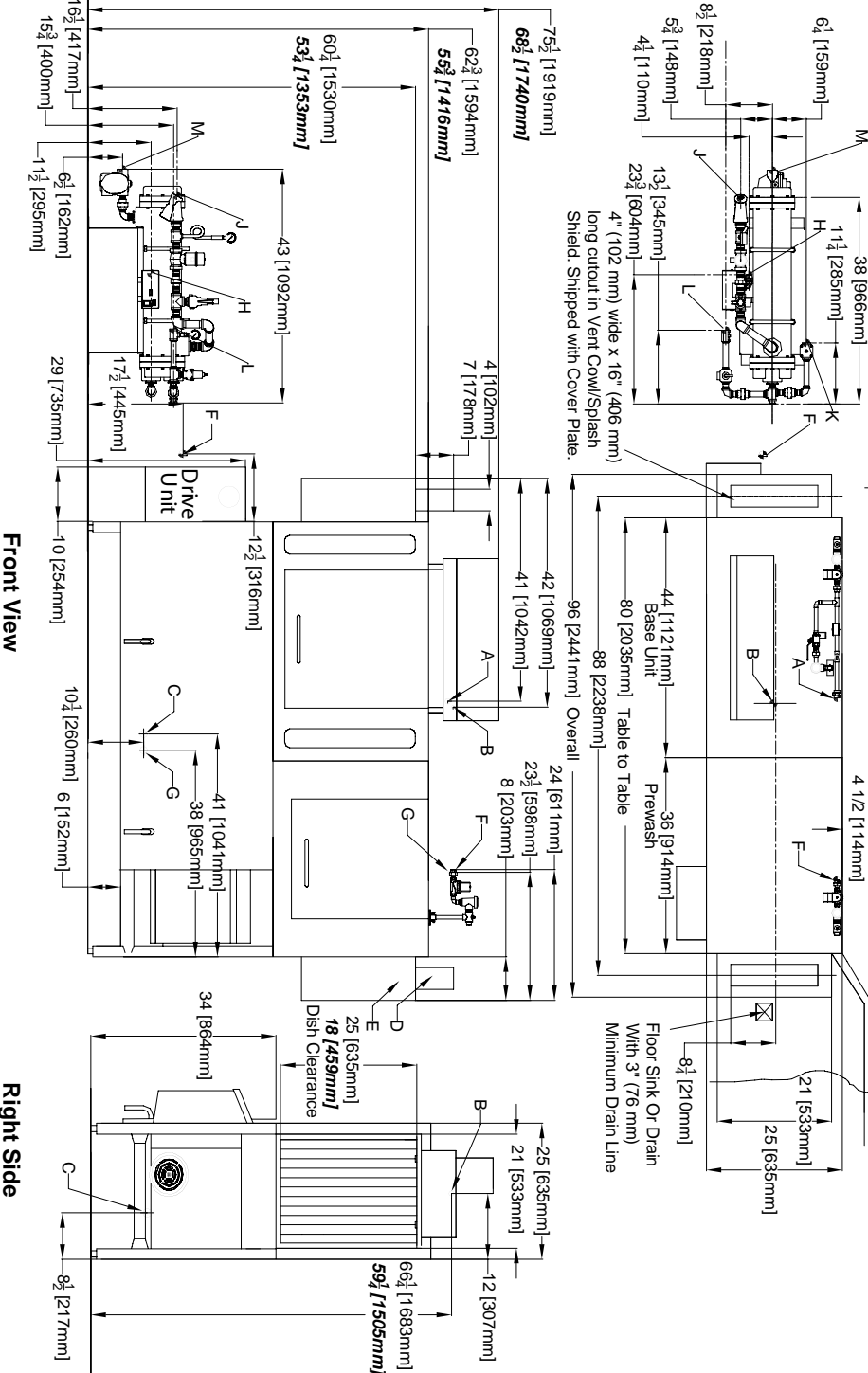
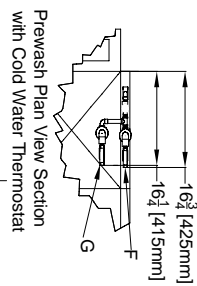


Note: Tub Will Accept a Table Flange Up to 24 7/8" (632 mm)

Use Silicone Sealer Between Table and Lip of Machine to Prevent Leakage

3/4" (19 mm) Table Turndown Flange 3/4" Max

21" (533 mm)



## Front View

## Right Side



# AJX Vision Series

Power / Connections / Requirements  
AJX-44 AJX-66 AJX-80 Vision Series

## APPROXIMATE TOTAL LOAD AMPS

		AJX-44	AJX-66	AJX-80
Electric <i>High Hood with 18kW tank heat</i>	208V / 60HZ / 3PH	56.7	60.1	62.3
	208V / 60HZ / 1PH	96.8	102.8	105.3
	230V / 60HZ / 3PH	51.9	55.3	57.5
	230V / 60HZ / 1 PH	88.6	94.6	97.1
	460V / 60HZ / 3 PH	26.0	27.7	28.8
Electric <i>Low Hood with 15kW tank heat</i>	208V / 60HZ / 3PH	48.4	51.8	54.0
	208V / 60HZ / 1PH	82.4	88.4	90.9
	230V / 60HZ / 3PH	44.4	47.8	50.0
	230V / 60HZ / 1 PH	75.5	81.5	84.0
	460V / 60HZ / 3 PH	22.3	24.0	25.0
Steam	208V / 60HZ / 3PH	6.7	10.1	12.3
	208V / 60HZ / 1PH	10.3	16.3	18.8
	230V / 60HZ / 3PH	6.7	10.1	12.3
	230V / 60HZ / 1 PH	10.3	16.3	18.8
	460V / 60HZ / 3 PH	3.4	5.1	6.2

## WATER REQUIREMENTS AND DRAIN REQUIREMENTS

	Pre-wash Tank	Wash Tank	Rinse
High-temperature	110°F-140°F (43°C-60°C)	160°F (71°C)	180°F (82°C)
Chemical sanitizing	110°F-140°F (43°C-60°C)	140°F (60°C)	140°F (60°C)
With 18kW Booster Heater Option			140°F / 60°C
With 30kW Booster Heater Option			110°F / 43°C
Flow Pressure (PSI)			15
Flow Rate Minimum (GPM) - High temperature			2.6
Chemical sanitizing			2.7
Incoming Waterline Size (IPS Min.) (Pre-wash/Wash)			1/2"
Drainline Size (IPS Min. Inches)			1-1/2"

## TANK CAPACITY

22" Pre-wash Tank Capacity	17.25 gal. / 65.3 ltrs
36" Pre-wash Tank Capacity	17.25 gal. / 65.3 ltrs
Wash Tank Capacity	21 gal. / 79.5 ltrs

## PERFORMANCE CAPABILITIES

	High-temperature	Chemical Sanitizing
Racks per Hour	225	209
Gallons per Hour	153	163
Gallons per Rack	.68	.78

## DIMENSIONS (ELECTRIC OR STEAM)

MODEL NO.	SIZE				DRAIN HEIGHT	SHIPPING INFO			SHIPPING DIMENSIONS		
	LENGTH BETWEEN DISHTABLES	MACHINE DEPTH	WALL CLEARANCE	CAVITY/ DISH CLEARANCE		WEIGHT	CLASS	CUBE	HEIGHT	WIDTH	DEPTH
AJX-44	44" (1118 mm)	25" (635 mm)	4.5" (114 mm)	Standard: 25" (635 mm) Low Hood: 18" (457 mm)	7.5" (190 mm)	641 lbs (291 kg)	92.5	138 cu. ft.	78" (1981 mm)	76" (1930 mm)	40" (1016 mm)
AJX-66	66" (1676 mm)	31" (787 mm)	4.5" (114 mm)	Standard: 25" (635 mm) Low Hood: 18" (457 mm)	7.5" (260 mm)	894 lbs (406 kg)	92.5	174 cu. ft.	78" (1981 mm)	96" (2438 mm)	40" (1016 mm)
AJX-80	80" (2794 mm)	31" (787 mm)	4.5" (114 mm)	Standard: 25" (635 mm) Low Hood: 18" (457 mm)	7.5" (260 mm)	954 lbs (433 kg)	92.5	199 cu. ft.	78" (1981 mm)	110" (2794 mm)	40" (1016 mm)

## BOOSTER HEATER OPTIONS

External 40°F (4°C) Min. Rise						
	AJX-44		AJX-66		AJX-80	
	kW	AMPS	kW	AMPS	kW	AMPS
208V / 60HZ / 3PH	17.2	47.8	17.2	47.8	17.2	47.8
230V / 60HZ / 3PH	18	45.2	18	45.2	18	45.2
460V / 60HZ / 3 PH	18	22.6	18	22.6	18	22.6
External 70°F (21°C Min.) Rise						
208V / 60 HZ / 3PH	30	83.4	30	83.4	30	83.4
230V / 60HHZ / 3PH	30	75.4	30	75.4	30	75.4
460V / 60HZ / 3 PH	30	37.7	30	37.7	30	37.7

## TANK KW

Wash Tank kW (Models 44, 66, 80 Electric High Hood only)	18
Wash Tank kW (Models 44, 66, 80 Electric Low Hood only)	15

## PUMP MOTORS

22" Pre-wash Pump Motor	1 HP
36" Pre-wash Pump Motor	2 HP
Wash Pump Motor	2 HP
22" Pre-Wash Capacity	120 (GPM) / 454 LPM
36" Pre-Wash Capacity	270 (GPM) / 1022 LPM
Wash Pump Capacity	270 (GPM) / 1022 LPM

## CONVEYOR

Conveyor Motor HP	1/4
Conveyor Speed (Feet per minute highest speed)	
High temperature	6.2 FPM / 1.9 M
Chemical sanitizing	5.75 FPM / 1.75 M

## VENTING REQUIREMENTS (CFM)

Input End	200
Output End	400
Total CFM	600

## STEAM COIL TANK HEAT (STEAM MODELS ONLY)

Steam Connection IPS	3/4 inches
Steam Flow Pressure (PSIG)	10-20
Consumption @ 15 PSIG	60 lbs./hr.



**SHIPPING ADDRESS**  
6209 North U.S. Highway 25E  
Gray, KY 40734

**MAILING ADDRESS**  
P. O. Box 1060  
Barbourville, KY 40906

**Tel: 606-523-9795**  
**Tel: 1-888-800-5672**  
**Fax: 606-523-1799**

**[www.jacksonmsc.com](http://www.jacksonmsc.com)**  
**E-mail: [customerservice@jacksonmsc.com](mailto:customerservice@jacksonmsc.com)**  
**07610-003-60-58 (10/08)**



We reserve the right to change specifications appearing in this bulletin without incurring any obligation for equipment previously or subsequently sold.