

Project _____
 Item _____
 Quantity _____
 CSI Section 11400
 Approval _____
 Date _____

Models

FL-14



Standard Features

- Incoming water pressure regulator
- Internally mounted electric booster heater
 - Capable of minimum 60°F temperature rise for required 180°F minimum sanitizing rinse temperature
- Two (2) rotating wash arms - 1 upper & 1 lower
- Stationary rinse nozzles - top & bottom
- Electromechanical controls
 - Safety door switch
 - Temperature control thermostat and low water protection
- High pressure, all stainless steel wash arms
- 32" wide x 30" high (813mm x 762 mm) door
- Double filtration system
- Externally mounted spray-down hose with spray gun nozzle
- Waterproof LED digital gauges
- Three wash cycles
- Stainless steel control panel is easily accessible
- Adjustable bullet feet
- Detergent/rinse additive signal connection fuse box

Mandatory Specs

- Specify:
- Electric
 - Steam
 - Gas
- Specify voltage _____

Options

- Single Phase
- Dual Pressure
- Variable Speed-Controlled Exhaust Fan
- Steam Coil Heated Rinse Tank

Accessories

- Utensil Basket with Hold-Down Lid
- Stainless Steel Bun/Sheet Pan Rack (14-pan capacity)
- Stainless Steel Cake/Hotel Pan Rack (14-pan capacity)

Specifications

Uses 6.5 gallons (25 L) of water per cycle


12 cycles per hour

Fully automatic timed cycles – 260 seconds, 380 seconds and 500 seconds

One (1) 9 kW heating element in a 8.5 gallon (32 L) rinse tank

40 gallon (151 L) wash tank

Durable 12 and 14 gauge stainless steel construction

Manufactured by LVO 



Intertek

SHIPPING ADDRESS

6209 North U.S. Highway 25E
 Gray, KY 40734

MAILING ADDRESS

P.O. Box 1060
 Barbourville, KY 40906

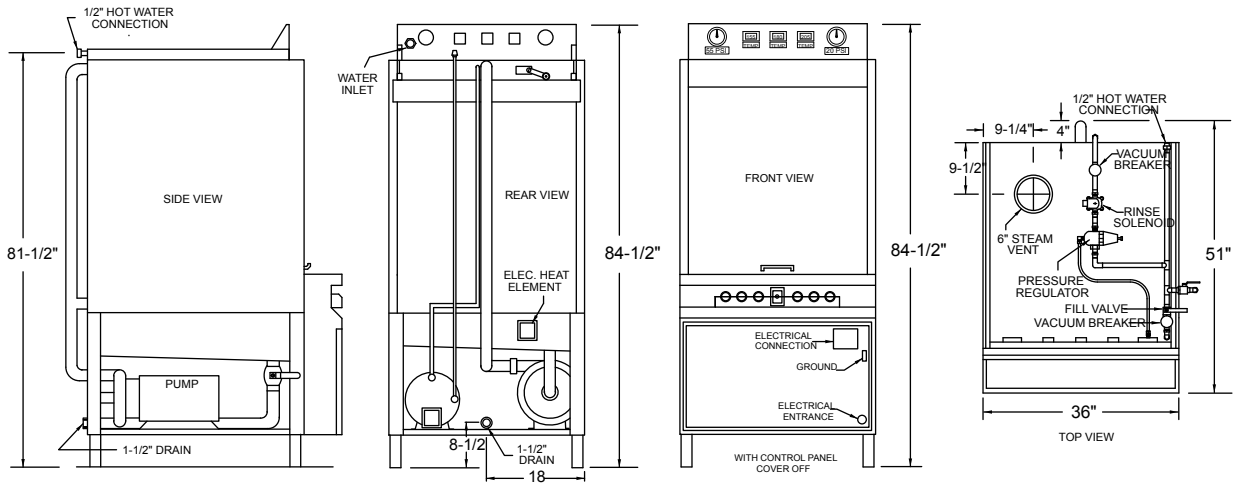
Tel: 1-888-800-5672

Fax: 606-523-1799

info@jacksonmsc.com

www.jacksonmsc.com





| MODEL NO. | MACHINE DIMENSIONS | | | | DRAIN HEIGHT | SHIPPING INFORMATION | | | | | |
|-------------------|----------------------|-----------------------|-----------------|------------------|--------------------|----------------------|-------|-------------------|------------------|------------------|----------------------|
| | HEIGHT | HEIGHT WITH DOOR OPEN | WIDTH | DEPTH | | WEIGHT | CLASS | CUBE | HEIGHT | WIDTH | DEPTH |
| FL-14 Electric | 84-1/2" (2146 mm) | 106" (2692 mm) | 36" (914 mm) | 51" (1295 mm) | 8-1/2" (216 mm) | 1150 lbs (522 kg) | 92.5 | 147.07 cu. ft. | 87" (2210 mm) | 46" (1168 mm) | 63-1/2" (1613 mm) |
| FL-14 Gas | 84-1/2" (2146 mm) | 106" (2692 mm) | 36" (914 mm) | 53" (1346 mm) | 8-1/2" (216 mm) | 1150 lbs (522 kg) | 92.5 | 147.07 cu. ft. | 87" (2210 mm) | 46" (1168 mm) | 63-1/2" (1613 mm) |

| DIMENSION REQUIREMENTS | |
|---|------------------|
| Wall Clearance (minimum) | 16" (406 mm) |
| Wall Clearance (control panel side) | 36" (914 mm) |
| Wall Clearance (back) | 12" (305 mm) |
| Height Requirement (with door open) | 106" (2692 mm) |
| Height Requirement (with door open) - Gas | 106" (2692 mm) |
| Inside Chamber Clearance | 29-1/2" (749 mm) |

| GAS REQUIREMENTS | | | |
|---|---------------|---------------|--------|
| Gas Connection (NPT) | 1/2" | | |
| | Minimum Inlet | Main Manifold | BTUs |
| Natural Gas (inches-water column) | 7.0" | 6.0" | 48,000 |
| Propane (inches-water column) | 11.0" | 10.0" | 48,000 |
| 3" stainless steel chimney on back of machine | | | |

| OPERATING CAPACITY | | | | |
|---------------------------|-------------|-------------|------------|-------------|
| Cycles Per Hour | Light 12 | Medium 8 | Heavy 6 | |
| OPERATING CYCLE (seconds) | Wash | Rinse | Dwell | Total Cycle |
| Light | 180 | 60 | 20 | 260 |
| Medium | 300 | 60 | 20 | 380 |
| Heavy | 420 | 60 | 20 | 500 |

| STEAM REQUIREMENTS | |
|--------------------------|------|
| Steam Connection (NPT) | 3/4" |
| Injectors (lbs per hour) | 23 |
| Coils (lbs per hour) | 43 |

| OPERATING TEMPERATURES | |
|------------------------|----------------|
| Wash (minimum) | 150° F (66° C) |
| Rinse (minimum) | 180° F (82° C) |

| WATER REQUIREMENTS | |
|------------------------------|----------------|
| Inlet Temperature (minimum) | 140° F (60° C) |
| Gallons Per Hour | 78 gal (295 L) |
| Gallons Per Cycle | 6.5 gal (25 L) |
| Waterline Size IPS (minimum) | 1/2" |
| Drainline Size IPS (minimum) | 1-1/2" |
| Flow Pressure (PSI) | 15-25 |
| Wash Tank Capacity | 40 gal (151 L) |
| Rinse Tank Capacity | 8.5 gal (32 L) |

| ELECTRICAL RATING | | | |
|-------------------|------|------|------|
| FULL LOAD AMPS | 208V | 230V | 460V |
| Electric | 79.0 | 72.2 | 37.1 |
| Steam Injectors | 54.0 | 49.6 | 25.8 |
| Steam Coils | 29.0 | 27.0 | 14.5 |
| Gas | 54.0 | 49.6 | 25.8 |

| WASH PUMP MOTOR | |
|-----------------|---------|
| Wash Pump Motor | 10.0 hp |

HOW TO SPECIFY: FL-14

SHIPPING ADDRESS
6209 North U.S. Highway 25E
Gray, KY 40734

MAILING ADDRESS
P.O. Box 1060
Barbourville, KY 40906

Tel: 1-888-800-5672
Fax: 606-523-1799
info@jacksonmsc.com

www.jacksonmsc.com
07610-002-98-01 (03/10)

