



# BEVERAGE-AIR

3779 Champion Blvd., Winston-Salem, NC 27105  
1-888-845-9800 Fax# 1-336-245-6453  
http://www.Beverage-Air.com

## Commercial Refrigeration Equipment General Specification

### 3 Year Parts/Labor Warranty Additional 2 Year Compressor Warranty

#### BB GLASS DOOR — PASS-THRU BACK BAR REFRIGERATORS WITH SLIDING GLASS DOORS OPEN FOOD RATED

*Food Rated models are certified for bottled beverages, packaged food, and open food.*

Pass-Thru, shallow depth back bar, self-contained refrigerators come in two widths of 48" and 72." BB48GSYF-1-B-PT includes 2 sliding glass doors per side. BB72GSYF-1-B-PT includes 3 sliding glass doors per side. Two heights include 34" with standard galvanized steel top for under shelf application and 36" when adapted with a stainless steel top (-27 models). Depth is 23" from face of door to back of cabinet. Handle projects 1/2.

#### CABINET CONSTRUCTION

Standard, cabinet exterior construction includes black steel finish. Stainless steel models available. Galvanized sub top standard on BB48GSYF-1-B and BB72GSYF-1-B. 2" stainless steel top optional (*specify -27*).

Sliding glass doors are self-closing and includes a stay-open feature and lock.

All stainless steel interior with radius corners is easy to keep clean and meets NSF Standard 7 for open food containers. Reinforced floor made from heavy-duty stainless steel to provide long lasting service. Interior, fluorescent lighting is standard.

Environmentally friendly foamed-in-place CFC and HCFC-free polyurethane insulation enhances the structural strength of the cabinet and helps increase energy efficiency.

#### REFRIGERATION

Refrigeration is fully accessible behind grille to right side of cabinet. Evaporator located above condensing unit permits full use of interior spaces. Forced air is projected the length of cabinet across the ceiling. Refrigeration system uses R134a refrigerant, which is CFC and HCFC-free for compliance with environmental safety concerns. Remote refrigeration models include expansion valve installed.

Condensate elimination is automatic and non-electric.

Interior, fluorescent lighting standard. Optional LED lighting.

#### ELECTRICAL

Units are wired at factory and ready for connection to a 115/60/1 phase, 15 amp dedicated outlet. 8' long cord and plug set included.

Item No. \_\_\_\_\_  
Quantity \_\_\_\_\_

**BEER EQUIPMENT  
SLIDING GLASS DOOR  
BACK BAR REFRIGERATOR  
23" BASE  
BB PASS-THRU SERIES  
OPEN FOOD RATED**

**MODELS:  
BB48GSYF-1-B-PT  
BB48GSYF-1-B-PT-27  
  
BB72GSYF-1-B-PT  
BB72GSYF-1-B-PT-27**



**BB48GSYF-1-B-PT**



**BB48GSYF-1-S-27-PT**  
(shown in s/s exterior with 2" s/s top)

#### AVAILABLE OPTIONS:

- LED lighting
- Wire shelf dividers
- 3" or 6" casters; 6" legs
- WINE models available (40°-60°F models)



\*Note: Not all markings may apply to all model variations.

Available From:

<b>Model Specified</b> _____	<b>Store#</b> _____
<b>Location</b> _____	<b>Quantity</b> _____

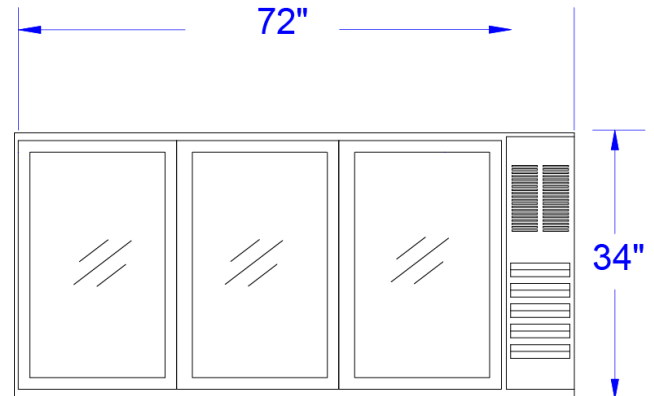
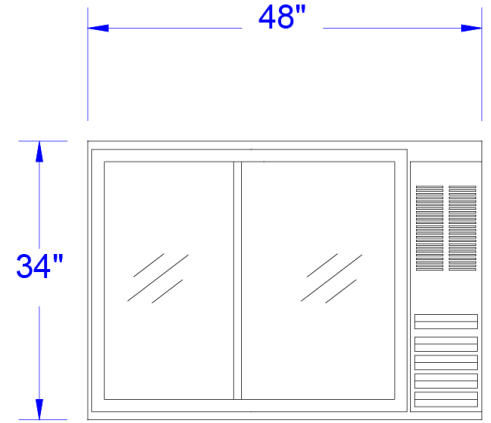
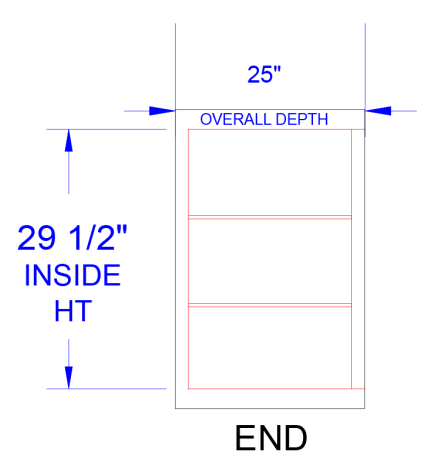


**BEVERAGE-AIR**

**Back Bar Glass Door Refrigerator—Pass-Thru Sliding Glass Doors FOOD RATED**  
**Models: BB48GSYF-1-B-PT, BB72GSYF-1-B-PT**

MODEL	BB48GSYF-1-B-PT	BB48GSYF-1-B-PT-27 (2" S/S TOP)	BB72GSYF-1-B-PT	BB72GSYF-1-B-PT-27 (2" S/S TOP)
<b>EXTERNAL DIMENSIONAL DATA</b>				
Length Overall (inches)	48"	48"	72"	72"
Length Overall (mm)	1219	1219	1829	1829
Depth Overall (inches)	25"	25"	25"	25"
Depth Overall (mm)	635	635	635	635
Height Overall— (inches)	34"	36"	34"	36"
Height Overall—(mm)	864	914	864	914
Number of doors	4	4	6	6
<b>INTERNAL DIMENSIONAL DATA</b>				
NET Capacity (cubic ft.)	12.1	12.1	19.4	19.4
NET Capacity (Liters)	343	343	549	549
Internal Length Overall (inches)	36"	36"	60"	60"
Internal Length Overall (mm)	914	914	1524	1524
Internal Depth Overall (inches)	18 1/2"	18 1/2"	18 1/2"	18 1/2"
Internal Depth Overall (mm)	470	470	470	470
Internal Height Overall (inches)	29 1/2"	29 1/2"	29 1/2"	29 1/2"
Internal Height Overall (mm)	749	749	749	749
Number of Shelves	4	4	6	6
Number of Kegs (1/2 barrel)	2	2	3	3
<b>ELECTRICAL DATA</b>				
Full Load Amperes 115/60/1	5	5	5	5
<b>REFRIGERATION DATA</b>				
Horsepower	1/4	1/4	1/4	1/4
<b>WEIGHT DATA</b>				
Gross Weight (Crated lbs)	306	306	366	366
Gross Weight (Crated kg)	139	139	166	166

**PLAN VIEWS**



\*Note: Not all markings may apply to all model variations.

**ELECTRICAL CONNECTION**

Units are pre-wired at factory and include 8' long cord and plug set.



**BEVERAGE-AIR® CORPORATION**

3779 Champion Blvd. • Winston-Salem, NC 27105 USA • (336) 245-6400 • Fax (336) 245-6453 • (888) 845-9800 • www.beverage-air.com

Specifications are subject to change without prior notice. 07/13  
 KaTom Restaurant Supply, Inc.