



BEVERAGE-AIR

3779 Champion Blvd., Winston-Salem, NC 27105
1-888-845-9800 Fax# 1-336-245-6453
<http://www.Beverage-Air.com>

Commercial Refrigeration Equipment General Specification

**1 Year Parts/Labor Warranty
Additional 4 Year Compressor Warranty**

CTF96 SERIES—COUNTERTOP FREEZER

Used for merchandising and storage of frozen product.
Requires minimum countertop space.

CABINET CONSTRUCTION

Heavy duty construction includes white epoxy coated steel interior walls. Exterior finish is heavy duty black textured steel. Black plastic door frames.

Highly efficient foamed-in-place polyurethane insulation enhances the structural strength of the cabinet and helps increase energy efficiency. Environmentally-friendly Cyclopentane is used as blowing agent for foaming process.

Triple pane glass door features inside and outside panes that are tempered for added safety. Door lock standard.

Ergonomic door handle standard.

Three (3) white epoxy coated steel shelves are standard. Only top two (2) shelves are adjustable.

REFRIGERATION

Refrigeration system uses R404a refrigerant, which is CFC free for compliance with environmental safety concerns. Operating temperatures of 0°F

Electronic control with digital display standard.

ELECTRICAL

Interior LED lighting enhances product illumination. Units wired at factory and ready for connection to a 115/60/1 phase, 15 amp dedicated outlet. 8' long cord and plug set included.

SPECIAL FEATURES

- Door lock standard
- Optional stand available

Item No. _____
Quantity _____

COUNTERTOP FREEZER MERCHANDISER SERIES CTF96 SERIES

MODELS:
CTF96



Door Locks Standard

CTF96

ELECTRICAL CONNECTION

Units pre-wired at factory and include 8' long cord and plug set.



115/60/1
NEMA-5-15P

Available From:



*Note: Not all markings may apply to all model variations.

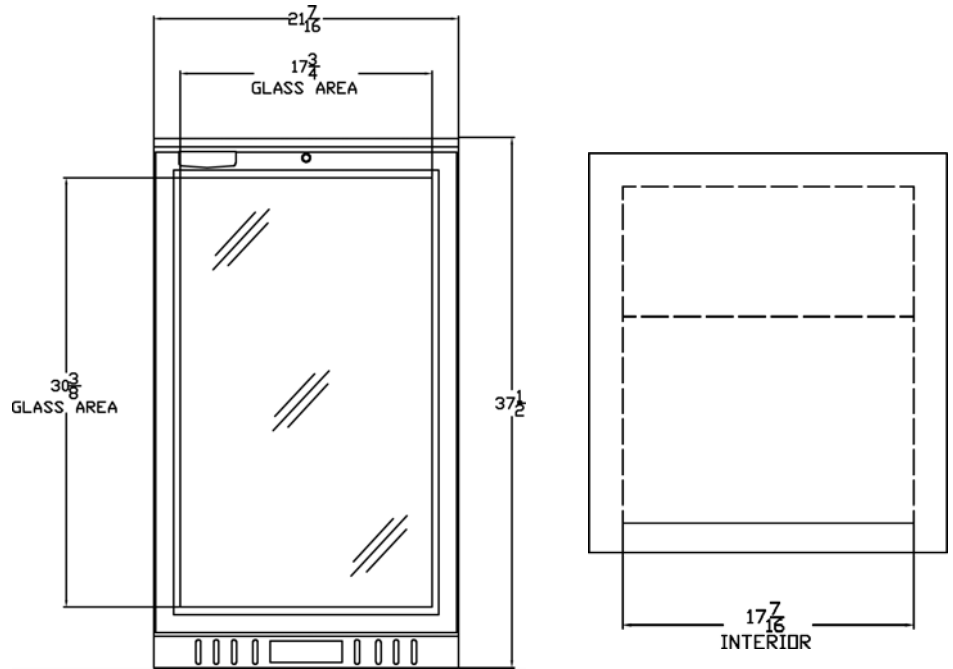
Model Specified _____	Store# _____
Location _____	Quantity _____



Countertop Merchandiser Series
Model: CTF96

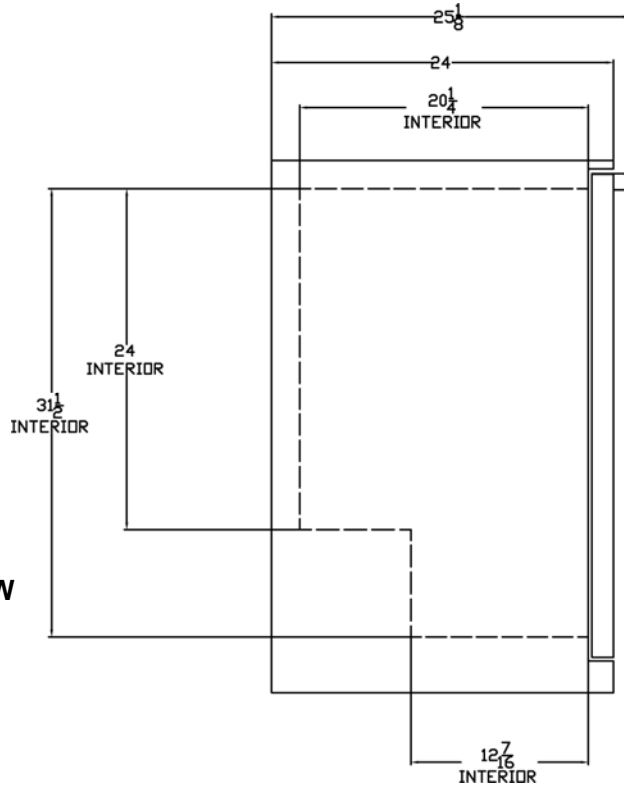
MODEL	CTF96
EXTERNAL DIMENSIONAL DATA	
Length Overall (inches)	21 7/16"
Length Overall (mm)	545
Depth Overall (inches)	25 1/8"
Depth Overall (mm)	638
Height Overall— (inches)	37 1/2"
Height Overall— (mm)	953
Number of doors	1
Depth with Door Open 90 °	45 1/8"
Clear Door Opening (inches)	18 1/4" x 34
INTERNAL DIMENSIONAL DATA	
NET Capacity (cubic ft.)	6.8
NET Capacity (Liters)	193
Internal Length Overall (inches)	17 7/16"
Internal Length Overall (mm)	443
Internal Depth Overall (inches)	20 1/4"
Internal Depth Overall (mm)	514
Internal Height Overall—(inches)	30 3/8"
Internal Height Overall—(mm)	772
Number of shelves	3
ELECTRICAL DATA	
Full Load Amperes 115/60/1	7.0
REFRIGERATION DATA	
Horsepower	1/2
WEIGHT DATA	
Gross Weight (Crated lbs)	121
Gross Weight (Crated kg)	55

PLAN VIEWS



FRONT VIEW

TOP VIEW



END VIEW



*Note: Not all markings may apply to all model variations.

BEVERAGE-AIR® CORPORATION

3779 Champion Blvd. • Winston-Salem, NC 27105 USA • (336) 245-6400 • Fax (336) 245-6453 • (888) 845-9800 • www.beverage-air.com

Specifications are subject to change without prior notice. 7/14