



BEVERAGE-AIR

3779 Champion Blvd., Winston-Salem, NC 27105
1-888-845-9800 Fax# 1-336-245-6453
<http://www.Beverage-Air.com>

Commercial Refrigeration Equipment General Specification

3 Year Parts/Labor Warranty Additional 2 Year Compressor Warranty

CABINET CONSTRUCTION

- Exterior—Stainless steel exterior.
- Interior—Stainless steel interior.
- Insulation—2" foamed-in-place CFC and HCFC-free polyurethane insulation.
- Will accept food carts (one per section) up to 27" wide x 29" deep x 64" high (supplied by others).
- Attachable door ramp of reinforced stainless steel includes a one-inch rise to the reinforced stainless steel cabinet floor.
- Stainless steel cart guides are included in the interior.

DIGITAL THERMOMETER

- Exterior digital thermometer provides a digital display of cabinet temperatures.

REFRIGERATION SYSTEM

- Top mount, environmentally friendly refrigeration system maintains product temperatures at 0°F.
- Factory engineered, self-contained refrigeration system uses environmentally friendly (CFC and HCFC-free) R404A refrigerant.

DOORS

- Solid door configuration.
- Anti-microbial door handles and door locks are standard.
- Field reversible doors and cam lift hinges standard. Positive seal self-closing door(s) with 120° stay open feature.
- Snap-in door gaskets of one piece construction, removable without tools for ease of cleaning.
- Wiper gasket at bottom of door seals door to ramp.

MODEL FEATURES

- Incandescent interior lighting.
- UL-EPH and CUL for open food product.

Item No. _____
Quantity _____

**TOP MOUNTED
ROLL-IN FREEZERS
PFI SERIES
SOLID DOORS**

**MODELS:
PFI1-1AS
PFI2-5AS**



PFI1-1AS



PFI2-5AS

Available From:



*Note: Not all markings may apply to all model variations.

Model Specified _____	Store# _____
Location _____	Quantity _____



BEVERAGE-AIR

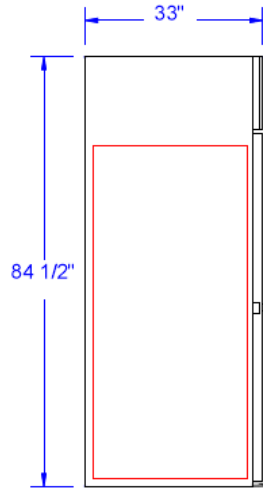
Top Mount, Roll-In Freezers

Models: PFI1, PFI2

(PFI) Roll-In

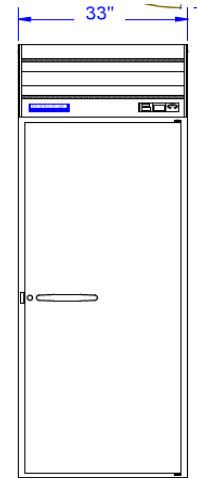
PLAN VIEWS

MODEL	PFI1-1AS	PFI2-5AS
EXTERNAL DIMENSIONAL DATA		
Length Overall (inches)	33"	66"
Length Overall (mm)	838	1676
Depth Overall—(inches) less handle	33"	33"
Depth Overall—(mm) less handle	838	838
Height Overall— (inches) less casters	84 1/2"	84 1/2"
Height Overall— (mm) less casters	2146	2146
Number of doors	1	2
INTERNAL DIMENSIONAL DATA		
NET Capacity (cubic ft.)	34.3	73.4
NET Capacity (Liters)	971	2079
Cart Capacity	1	2
ELECTRICAL DATA		
Volts*	115	208-230*
Full Load Amperes	10.6	10.5
REFRIGERATION DATA		
Horsepower	1/2	1
WEIGHT DATA		
Gross Weight (Crated lbs)	562	814
Gross Weight (Crated kg)	255	369



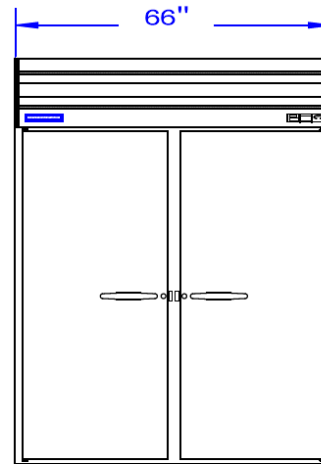
END

PFI1-1AS
PFI2-5AS



FRONT

PFI-1AS



FRONT

PFI2-5AS



Note: Not all markings may apply to all model variations.

***Note:** 208-230 volt units are designed for field wiring.

BEVERAGE-AIR® CORPORATION

3779 Champion Blvd. • Winston-Salem, NC 27105 USA • (336) 245-6400 • Fax (336) 245-6453 • (888) 845-9800 • www.beverage-air.com

Specifications are subject to change without prior notice. 06/13