

810, 815, 830 & 850

Item#	Project	Date	Models: 810, 815, 830, 850
-------	---------	------	----------------------------

Heavy Duty Hot Water Boilers



Model 815(E)

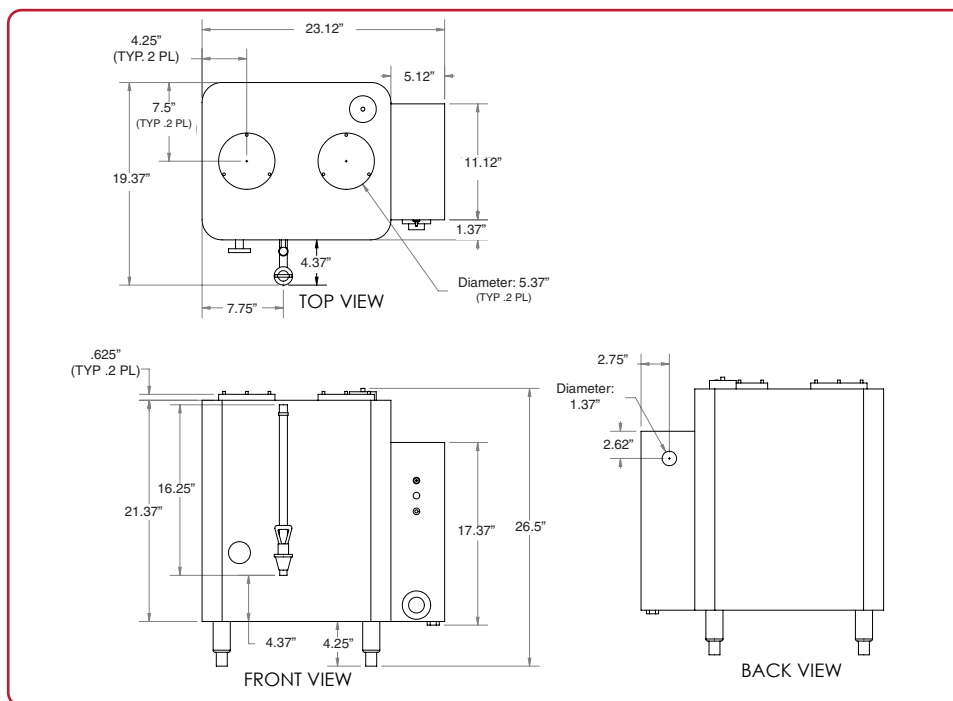
Features

- Durable Construction: All A.I.S.I. type 304, 18-8 stainless steel.
- Constant Temperature: Water temperature is maintained between 190°F and 200°F (88° and 93°C).
- Automatic refill of water compartment: Water compartment automatically refills and reheats as needed.
- Low water cutoff system: Protects heating elements from burn out, at start-up or in operation.
- Dial Thermometer with color-marked brew zone.
- Thermostat adjustable from front: Knob on thermostat has four marked positions: Brew, Hold, Night Standby and Off.
- Drain valve in bottom.
- Control drawer with all electronic components is accessible from side.



Models & Dimensions

810, 815, 830 & 850 Heavy Duty Hot Water Boilers



Specifications

Model	Description	Gallon Draw Off	Heater Size	Dimensions (H x W x D)	50 F Inlet Water (GPH Recovery)	140 F Inlet Water (GPH Recovery)	1 Phase Max. Amps	Ship Weight
810(E)	10-gallon (37.8L) capacity	10	1.75KW 120V/1PH 5.5 KW 208V/1PH	22.5" x 18" x 15" (57 cm x 46 cm x 38 cm)	120V = 4.5 208V = 13	120V = 12 208V = 32	120V = 15 208V = 25	82 lbs. (37 kg)
815(E)	15-gallon (56.8L) capacity	15	5.5 KW 208V/1PH 7KW 240V/1PH	24" x 18" x 15" (61 cm x 46 cm x 38 cm)	208V = 13 240V = 18	208V = 32 240V = 44	208V = 25 240V = 29	85 lbs. (39 kg)
830(E)	30-gallon (114L) capacity	30	12 KW	27" x 24.5" x 20.25" (69 cm x 62 cm x 51 cm)	30	74	57	125 lbs. (57 kg)
850(E)	50-gallon (189L) capacity	50	15 KW	32" x 24.5" x 20.25" (81 cm x 62 cm x 51 cm)	38	90	72	145 lbs. (66 kg)

NOTE: 810 120V Model supplied with cord with NEMA 5-15P Plug. Contact GMCW™ for more information. Specifications subject to improvement or change without notice.



GMCW™ 4003 Collins Lane, Louisville, KY 40245 USA

Tel: +1.502.425.4776 / 800.695.4500 (USA & Canada only) • Fax: +1.502.425.4664 • www.gmcw.com • Email: info@gmcw.com