

# 2-ASC-4E/STK

## THE PLATINUM SERIES STACKED ELECTRIC CONVECTION OVENS



- Space savings convenience with stacking combination for a greater cooking capacity within a smaller footprint.
- Superior baking and roasting capability.
- A dependent <sup>60</sup>/<sub>40</sub> door system includes solid stainless steel doors and a double pane thermal window door to view the lighted oven interior.
- Both doors open beyond a 120-degree angle for easier loading; include a spring-loaded, roller assembly to provide a positive, pressure-lock seal; and a heavy-duty door hinging system.
- Solid welded construction with stainless steel front, top, left and right sides. Rear enclosure panel is made with corrosion resistant coated steel.
- Removable oven baffle provides easy cleaning.
- Heavy-duty 3/4 hp, two-speed motor on each oven provides fan speed for high volume production or delicate baking.
- Easy to clean porcelain enamel interior is standard.
- 10kW element.
- Durable, low maintenance stainless steel door gaskets.

Each Platinum Series electric convection oven features solid welded construction and an angle iron frame. Oven interiors are constructed of porcelain enamel with coved corners, and a heavy duty, 14 gauge bottom liner. Each oven is supplied with six (6) chrome plated wire shelves with 2 removable side racks and 12 shelf positions spaced at 1-3/4" (43mm). Each oven is furnished with two interior lights, a 10,000 watt heating element and a heavy duty, 3/4 hp, two-speed fan motor. Controls include a 100°F to 500°F (38°C to 260°C) thermostat and a 60 minute, count-down timer. Each control features a oven cool-down function, oven-ready indicator light, and produces an audible signal when time has expired. Oven combination includes stacking hardware, riser vent kit and one set of 6" (152mm) legs with bullet feet.

MODEL 2-ASC-4E/STK: TWO STACKED OVENS WITH MANUAL CONTROL, PORCELAIN ENAMEL INTERIOR

MODEL 2-ASC-4E/STK/e: TWO STACKED OVENS WITH ELECTRONIC CONTROL AND FOOD PROBE, PORCELAIN ENAMEL INTERIOR



### FACTORY INSTALLED OPTIONS

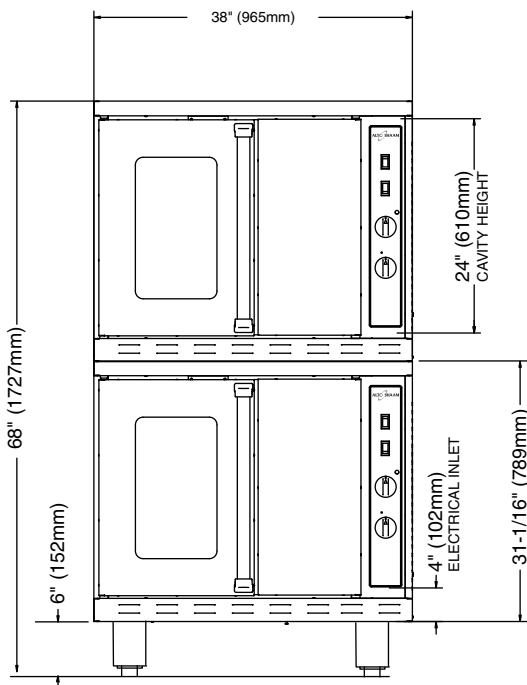
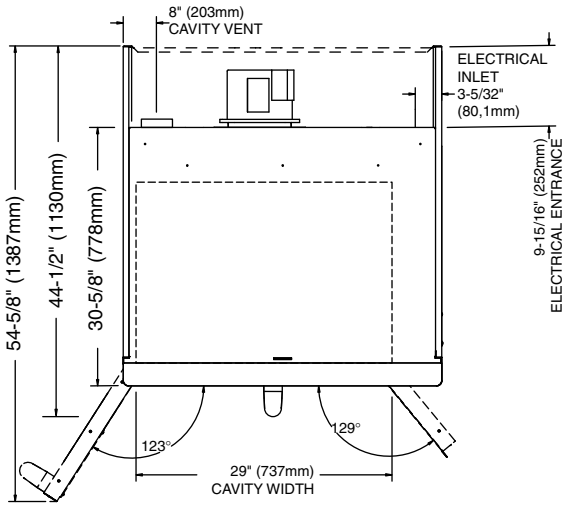
- Stainless steel oven interior

### ADDITIONAL FEATURES

- Oven combination is available with optional seismic feet or casters
- Easy access for bulb replacement

# 2-ASC-4E/STK

## STACKED ELECTRIC CONVECTION OVENS



<b>DIMENSIONS</b> H x W x D:
<b>OVERALL EXTERIOR:</b> 68" x 38" x 44-1/2" (1727mm x 965mm x 1130mm)
<b>INTERIOR PER OVEN:</b> 24" x 29-1/8" x 25" (610mm x 740mm x 635mm)

ELECTRICAL • EACH OVEN					
VOLTAGE	PHASE	CYCLE/HZ	AWG	AMPS	kW
208 (AGCY)	1	60	6	50.0	10.4
240 (AGCY)	1	60	6	43.3	10.4
208 (AGCY)	3	60	8	28.8	10.4
240 (AGCY)	3	60	8	25.0	10.4
480 (AGCY)	3	60	8	12.5	10.4
220 (AGCY)	1	50	6	40.0	8.7
<b>NO CORD AND PLUG</b>					

MINIMUM CLEARANCE REQUIREMENTS	
SIDES, LEFT AND RIGHT	2" (51mm)
BACK SIDE	0" (0mm)
FROM GREASE PRODUCING EQUIPMENT	6" (152mm)
RECOMMENDED SERVICE ACCESS RIGHT SIDE	20" (508mm)

PRODUCT/PAN CAPACITY • EACH OVEN
72 lb (33 kg) MAXIMUM — 45 qts (43 liters)
Twelve (12): 18" x 26" x 1" full-size sheet pans
Includes 6 chrome plated wire shelves with 2 removable side racks and 12 shelf positions spaced at 1-3/4" (43mm)

OPTIONS & ACCESSORIES	
<b>CASTER SET (4) 6" (152mm) HEIGHT</b> FOR MOBILE STACK APPLICATIONS <input type="checkbox"/> 2 rigid, 2 swivel w/brake	5003790
<b>LEG SET (4) 6" (152mm) HEIGHT</b> <input type="checkbox"/> with Seismic feet	5003795
<input type="checkbox"/> REAR ENCLOSURE PANEL, Stainless Steel	5005876
<input type="checkbox"/> SHELF	SH-26795

WEIGHT • EACH OVEN	
NET: 393 lb (178kg)	SHIP: 535 lb (243kg)
PLUS APPROX. 5 lb (2kg) FOR STACKING COMPONENTS (NET WT.)	
CRATE DIMENSIONS:	45" L x 52" W x 75" H. (1143mm x 1321mm x 1905mm)

**INSTALLATION REQUIREMENTS**

- Appliance must be installed level and must not be installed in any area where it may be affected by steam, grease, dripping water, high temperatures, or any other severely adverse conditions.
- Mobile appliances must be secured to the building structure by means of a restraining device (NOT FACTORY SUPPLIED).
- Hood installation is recommended (CHECK LOCAL CODES).



W164 N9221 Water Street • P.O. Box 450 • Menomonee Falls, Wisconsin 53052-0450 • U.S.A.  
PHONE: 262.251.3800 800.558.8744 U.S.A./CANADA FAX: 262.251.7067 800.329.8744 U.S.A. ONLY

www.alto-shaam.com