

ADVANTAGE™ AD HAND & HAIR DRYER SPECIFICATIONS

NEW!



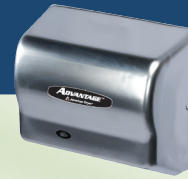
White ABS



White Steel



Black Graphite



Satin Chrome



Stainless Steel

THE **ADVANTAGE SERIES** IS THE PERFECT REPLACEMENT FOR THE TRADITIONAL HAND AND HAIR DRYER WITH MORE POWER & FEATURES IN A COMPACT DESIGN.

FEATURES:

- DRIES IN 25 SECONDS
- UNIVERSAL VOLTAGE
- FIXED NOZZLE
- 5 YEAR WARRANTY

Construction Features:

UNIVERSAL VOLTAGE – The new **ADVANTAGE AD** series can be connected to any voltage from 100 - 240 volts, 50/60Hz. The dryer configures itself to your voltage, making installation easier.

HEAVY DUTY ONE-PIECE COVER OPTIONS

- Flame retardant white ABS
- Steel with white epoxy finish (M)
- Steel with black graphite epoxy finish (BG)
- Steel with satin chrome finish (C)
- Stainless Steel with #4 brush finish (SS)

VANDAL RESISTANT – Tamper resistant screws secure cover to base. Air intake vents are shielded for additional safety.

MOTOR – Heavy duty universal motor. 1/8 HP, 4,800 RPM. Automatic thermal protector.

AUTOMATIC SENSOR – Ultra energy efficient microprocessor-controlled sensor turns dryer on when hands are under the outlet for up to 35 seconds. **Stand by power is only one watt.** RoHS compliant lead-free design.

HEATING ELEMENT – Constructed of NiChrome resistance wire with thermal protector. Heating element operates in the black range for maximum life.

specifications **ADVANTAGE**

AIR FLOW	180 CFM (Cubic Feet per Min.)
AIR VELOCITY	7,300 LFM (Linear Feet per Min.)
AIR TEMP	120°F at 72°F Ambient
SOUND LEVEL	67dB (Quietest in its class)
DIMENSIONS SURFACE	10-1/8"W x 9-3/8"H x 5-5/8"D

WARRANTY:

5-year limited warranty.
Includes **same day** factory repair or part replacement.
See owner's manual for details.

ADVANTAGE MODEL REFERENCE CHART

ABS White	Steel White	Black Graphite	Steel Chrome	Stainless Steel
AD90	AD90-M	AD90-BG	AD90-C	AD90-SS

ELECTRICAL

Universal Voltage
100-240 V 50/60 Hz
12.5 A max. @ 120 V
6.5 A max. @ 240 V

Hair drying with 80 second cycle add (H) after model number.
For ADA accessories, visit americandryer.com

NEW

ACCESSORIES



ADA-WG*
WALL GUARD



ADA-RK*
RECESS KIT



AP
ADAPTER PLATE

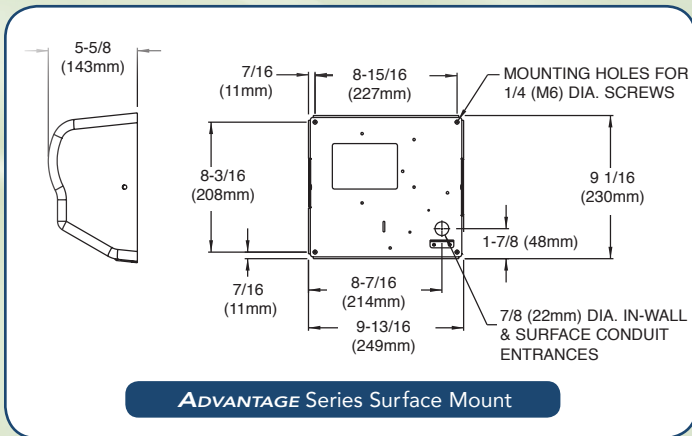
* Not for use with HAIR dryers
For ADA Accessories, visit americandryer.com

ACCESSORIES



ADA-WG WALL GUARD	ADA-RK RECESS KIT	AP ADAPTER PLATE
Accessories Reference Chart		
ADA-WG*	ADA Compliant seamless stainless steel wall guard	
ADA-RK*	ADA Compliant seamless stainless steel recess kit	
AP	Stainless steel universal adapter plate	
* Not for use with HAIR dryers For more information, visit americandryer.com		

ADVANTAGE™ SERIES MOUNTING DIAGRAM



Recommended Mounting Heights from Bottom of Dryer to Finished Floor

	Men	Women	Children	Disabled
All Hand Dryers	44"	42"	32" - 42"	36"
Advantage HAIR Dryer	74"	68"	48" - 68"	48"



American Dryer, Inc.
33067 Industrial Road | Livonia, MI 48150 | U.S.A.
Toll Free 800.485.7003 U.S. | Ph: 734.421.2400 | Fax 734.421.5580

Web: www.americandryer.com
Email: sales@americandryer.com
© American Dryer, Inc. All Rights Reserved
Revised July 2013

SAVE 95% VERSUS PAPER TOWELS

ADVANTAGE Series Hand dryers achieve up to a 95% cost savings over paper towels. These savings are realized by eliminating the maintenance and operating expenses associated with paper or linen towels.

"Our school saved over \$21,000 last year with American Dryer!"

COST ANALYSIS FOR A PUBLIC SCHOOL

Paper Towel Usage	800 CASES
Total Paper Costs	\$24,000
Hand Dryer Operating Costs	\$2,453
ANNUAL SAVINGS	\$21,547
Payback Time	11 MONTHS

COST ANALYSIS FOR A RESTAURANT

Paper Towel Usage	90 CASES
Total Paper Costs	\$2,025
Hand Dryer Operating Costs	\$96
ANNUAL SAVINGS	\$1,929
Payback Time	12 MONTHS

GENERAL INFORMATION

DRYER PLACEMENT:

Dryers should be placed at least 2 feet apart and at least 12" from washbasin. Do not install dryer over washbasin. Automatic dryers should be at least 18" above any projection which may interfere with the operation of the automatic sensor. In congested areas the dryers should be located to create a flow from the washbasin to dryer to exit. Recommended mounting heights are shown in the table below.

DRYER INSTALLATION:

Dryers must be installed by a licensed electrician. A single phase dedicated 15 amp or 20 amp electrical line is required. Dryer must be properly grounded. One side of dryer should be mounted to a stud. All surface mount dryers are provided with conduit entrances for both in-wall and surface wiring.

QUANTITY ESTIMATE, HAND DRYER:

Average traffic washroom.....1 dryer per 2 washbasins
Heavy traffic washroom.....1 dryer per washbasin
54" wash fountain.....4 dryers per sink

SHIPPING WEIGHT: AD 8 lbs, AD-M/BG/C/SS 10 lbs

Printed on Recycled Paper

