

Slimline

Spec Sheet No. SL- 5

Job Name _____

Item # _____ Qty. _____

Model # _____

Uni-Serv Speed Bar

Non-Cold Plate

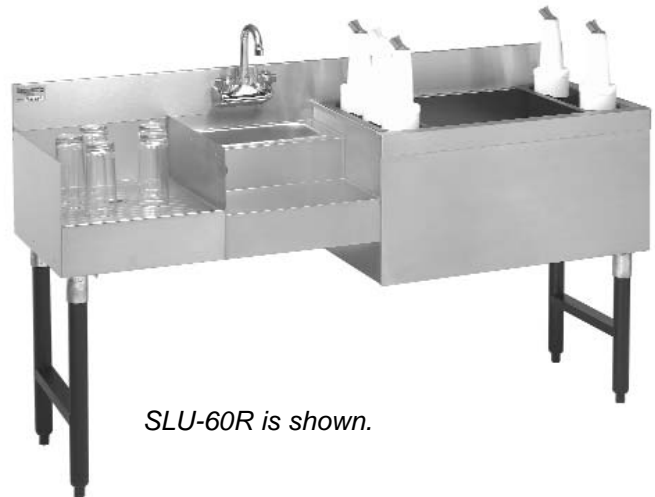
SLU-60R

SLU-60L

Cold Plate Model

SLU-60L-7

SLU-60R-7



SLU-60R is shown.

Specifications

•**Sink Bowl:** 6"L x 11"W x 6"D 20 gauge 300 series stainless steel seamless deep drawn.

•**Recess Step:** 22 gauge 300 series stainless steel.

•**Glass Shelf:** 22 gauge 300 series stainless steel.

•**Ice Bin:** 22 gauge 300 series stainless steel.

•**Front Apron:** 22 gauge 300 series stainless steel.

•**Backsplash:** 22 gauge 300 series stainless steel.

•**Insulation:**
2 lb. density styrofoam - non cold plate.
2 lb. density foam-in-place - cold plate.

•**Bottle Rack:** (2) Injection molded plastic.

•**Under Structure:** 22 gauge galvaneal fronts and backs. 11 gauge electrogalvaneal leg channel.

•**Legs:** 1-⁵/₈" O.D. 18 gauge galvanized with electro static black powder coat and black plastic adjustable bullet feet. To include stainless steel legs add the suffix -SS.(Optional)

•**Electrical:** 15 amp - 120V duplex receptacle.

•**Plumbing:** Ice Bin - 1" I.P.S. drain
Glass Shelf - 1" I.P.S. drain.
Sink - 1" I.P.S. drain.

•**Faucet:** 4" on center splash mount with gooseneck swivel spout.

•**Cold Plate*:** Cast aluminum with 7 circuits sealed into the bottom. Tubing to have 5 syrup and 2 water lines with ⁵/₁₆" diameter stainless steel bump and swedge ends. *Only on -7 models.



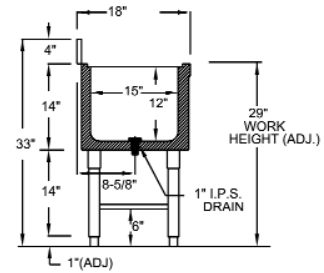
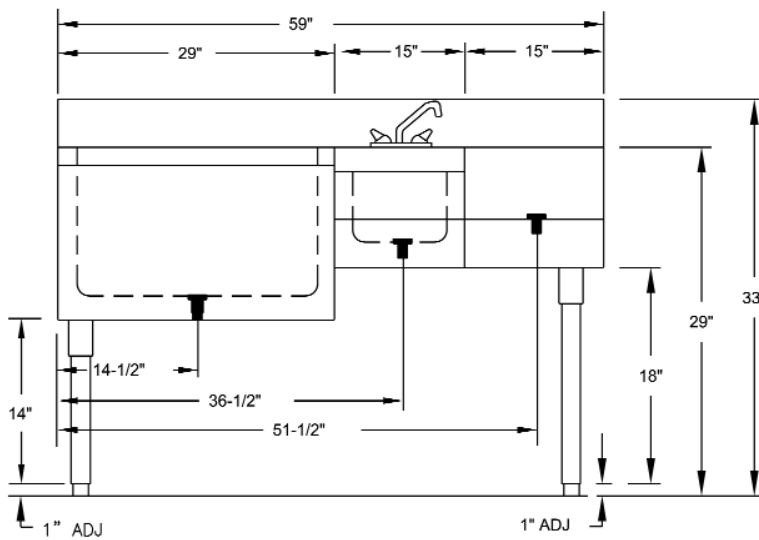
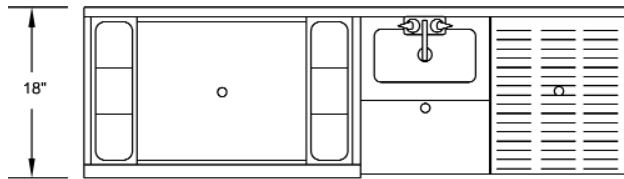
Supreme Metal

Toll Free: 800-645-2526

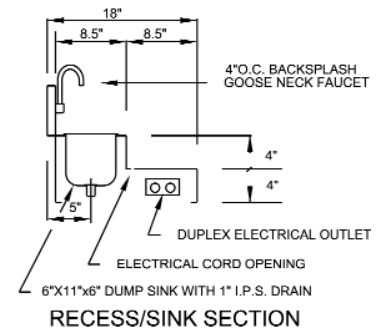
Fax: 770-740-6010

www.suprememetal.com

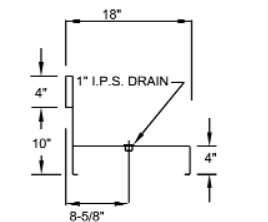
Slimline



ICE CHEST SECTION



RECESS/SINK SECTION



GLASS SHELF SECTION

Model Number	Overall Width	Ice Bin Location	Ice Capacity	Packaged Weight	Packaged Cubic Feet
SLU-60L	59"	Left	98 lbs.	100 lbs.	22
SLU-60R	59"	Right	98 lbs.	100 lbs.	22
7 Circuit Cold Plate Units					
SLU-60L-7	59"	Left	98 lbs.	135 lbs.	22
SLU-60R-7	59"	Right	98 lbs.	135 lbs.	22

SupremeMetal is constantly engaged in a program of improving their products. We reserve the right to change our specifications without prior notice.