



HYPLUS PRESSURE BOILER

MODEL CNEB/1

HyPlus cabinet base electric boiler.

PROJECT NAME:

LOCATION:

ITEM NO:

QTY:

MODEL NO:

AIA NO:

SIS NO:

CONSTRUCTION: Cabinet base shall be manufactured of stainless steel with louvered lift off front panel for access to boiler. Cabinet exterior shall be uniformly polished to a #3 finish with control face plates of smudge resistant polyester film.

CERTIFICATIONS: Cabinet-mounted boiler shall be ASME Code constructed and National Board registered for operation up to 15 PSI. Electric boiler shall be UL listed. Unit shall be designed and manufactured to meet regulatory known health department sanitation codes.

CONTROLS: Electric boiler shall be supplied with power ON switch, RESET light, start switch, low water sensor, pop safety valve, water level sight glass on front panel and an outside cabinet mounted pressure gauge.

PERFORMANCE FEATURES: Unit shall shut off if water level is low or the unit builds up too much pressure. When the power switch is turned "OFF" the boiler automatically drains after the water has cooled to 170 degrees F. Boiler shall be of 24, 36 or 48kw providing 2.2, 3.5 or 4.7 BHP of steam respectively (please specify).

INSTALLATION: Unit requires 208, 240 or 480 volt hard wired electrical connection. Unit requires 1/2" NPT cold water supply line and 1-1/4" free venting drain.

STEAM SOURCE FOR EQUIPMENT: Boiler is provided with a 1/2" NPT power take off valve. To ensure proper performance boiler must be properly sized to meet BHP requirements of equipment to be powered. Appropriate steam traps and piping must be professionally installed.

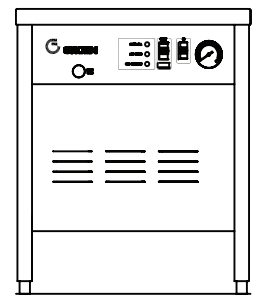
WATER SUPPLY REQUIREMENTS:

Water Pressure:	30-60 PSI
PH:	7 to 9
Hardness:	less than 60 ppm
TDS:	30-60 ppm
Chlorine & Chloramine:	less than 0.1 ppm
Total Chloride:	less than 30 ppm
Silica:	less than 12 ppm
Undissolved Solids:	less than 5 micron

ORIGIN OF MANUFACTURE:

Designed and manufactured in the United States.

Electric boiler in stainless steel cabinet.
(model CNEB/1 shown)



OPTIONS/ACCESSORIES:

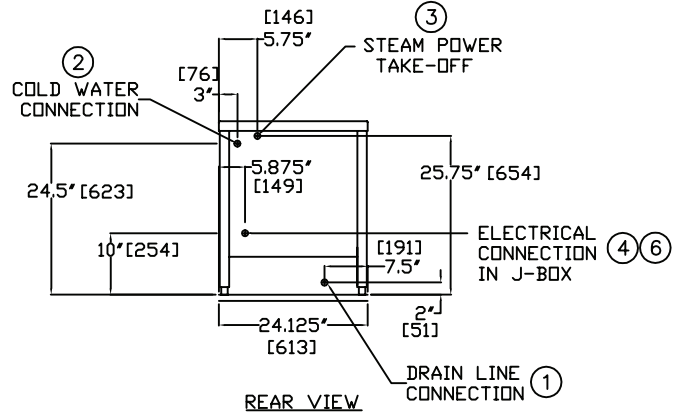
- Prison Package
- Delimer/Descaler
- Degreaser
- Field Drain Tempering Kit
- Interconnecting Piping 12'
- Interconnecting Piping 6'
- Flanged Feet
- Puresteam Water Treatment System (extends warranty (1) year)
- Puresteam Replacement Cartridge
- Pre-filter System
- Dual Water Connection



REVA

SERVICE CONNECTIONS AND NOTES:

- ① DRAIN CONNECTION: 1-1/4" NPT
- ② COLD WATER SUPPLY: 1/2" NPT
- ③ STEAM POWER TAKE-OFF: 1/2" NPT
- ④ MAIN ELECTRICAL CONNECTION: 1-31/32" DIA. HOLE (REF. 3/4" CONDUIT KNOCK-OUT)
- ⑤ DO NOT INSTALL UNIT OVER DRAIN OR FLOOR SINK AS HUMIDITY OR STEAM MAY DAMAGE ELECTRICAL COMPONENTS.
- ⑥ AUX. ELECTRICAL CONNECTION: 1-31/32" DIA. HOLE (REF. 1-1/2" CONDUIT KNOCK-OUT) FOR 208V/240V (48KW UNITS) ONLY



SPECIFY VOLTAGE REQUIREMENTS

- 208v/60/3
- 240v/60/3
- 480v/60/3

	208v/60/3	240v/60/3	480v/60/3	BHP
24KW	67 AMPS	58 AMPS	29 AMPS	2.2
36KW	100 AMPS	87 AMPS	44 AMPS	3.5
48KW	134 AMPS	116 AMPS	58 AMPS	4.7

SPECIFY WATTAGE REQUIREMENTS

- 24KW
- 36KW
- 48KW

