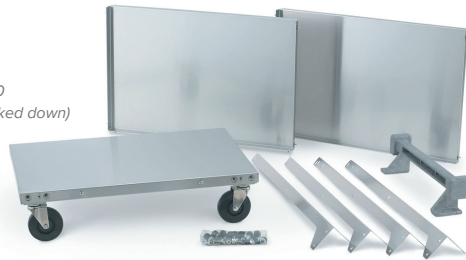


Stainless Steel Assembled and Knocked-Down Utility Carts

- Heavy-duty welded construction
- Three stainless steel shelves
- ABS handle helps prevent damage to walls and doors
- Rated load capacity is weight distributed evenly on all shelves
- Swivel casters provide quiet and steady transport
- Height between shelves: 12" (30 cm) – 97140 is 12½" (31.3 cm)
- Knock-down design minimizes shipping costs



97320
(knocked down)



97320
(shown assembled)



97120

| ITEM # | DESCRIPTION | CAPACITY LB (KG) | CASTER SIZE IN (CM) | MAXIMUM DIMENSIONS (L X W X H): IN (CM) | SHELF SIZE IN (CM) | CASE LOT |
|--------|-----------------------------|---------------------|------------------------|--------------------------------------------|------------------------|----------|
| 97120* | Medium-duty, assembled | 300 (135) | 3½ (9) | 27½ x 15½ x 32½ (70 x 40 x 84) | 15½ x 24 (39.4 x 60.9) | 1 |
| 97121 | Medium-duty, assembled | 300 (135) | 3½ (9) | 30⅞ x 17¾ x 33¾ (79 x 45 x 86) | 17¾ x 27 (45 x 69) | 1 |
| 97125 | Heavy-duty, assembled | 400 (180) | 4 (10) | 27½ x 15½ x 32½ (70 x 40 x 84) | 15½ x 24 (39.4 x 60.9) | 1 |
| 97126 | Heavy-duty, assembled | 400 (180) | 4 (10) | 30⅞ x 17¾ x 33¾ (79 x 45 x 86) | 17¾ x 27 (45 x 69) | 1 |
| 97140 | Extra-heavy-duty, assembled | 500 (225) | 4 (10) | 39½ x 21 x 33¾ (100 x 54 x 84) | 21 x 35 (54 x 90) | 1 |
| 97320 | Medium-duty, knocked-down | 300 (135) | 3½ (9) | 27½ x 15½ x 32½ (70 x 40 x 84) | 15½ x 24 (39.4 x 60.9) | 1 |
| 97326 | Heavy-duty, knocked-down | 400 (180) | 4 (10) | 30⅞ x 17¾ x 33¾ (79 x 45 x 86) | 17¾ x 27 (45 x 69) | 1 |

*Shippable via FedEx® or UPS® Note: For replacement part information, refer to VOLLRATH.com.

Money Saver Knocked-Down (K.D.) Cart

- Chrome-plated tubular frame
- Stainless steel 20-gauge shelves
- 4" (10 cm) casters provide quiet and steady transport
- Overall height: 36½" (92.7 cm)
- Height between shelves: 8½" (22 cm)
- Shippable via FedEx or UPS®



97105

| ITEM # | DESCRIPTION | CAPACITY: LB (KG) | SHELF DIMENSIONS: IN (CM) | CASE WEIGHT: LBS (KG) | SHIPPING CUBE | CASE LOT |
|--------|-------------|-------------------|---------------------------|-----------------------|---------------|----------|
| 97105 | 3-shelf | 400 (180) | 24 x 16 (61 x 41) | 36 (16.3) | 1.904 | 1 |
| 97106 | 3-shelf | 500 (225) | 33 x 21 (85 x 54) | 49.6 (22.5) | 2.283 | 1 |

Note: For replacement part information, refer to VOLLRATH.com.