

GLASS AND CHEMICAL STORAGE CABINETS

CABINETS WITH SINK



MODELS

- 7057-1
- 7057-3



Perlick Features

- Wet waste sink with removable dump box
- NSF listed, commercial grade hot/cold water faucet (must be ordered separately)
- Convenient chemical storage compartment with convenient removable water tight pan that keeps chemical containers off the floor.
- Free-standing station can be used wherever efficient waste disposal, glass handling or chemical storage is needed.



GENERATIONS OF
EXCELLENCE

Form No. SB06
Rev. 09.19.2011

Perlick[®]

8300 West Good Hope Road • Milwaukee, WI 53223 • Phone 414.353.7060 • Fax 414.353.7069
Toll Free 800.558.5592 • E-Mail perlick@perlick.com • www.perlick.com

Size and Specifications

Cabinets with Sink

Job _____

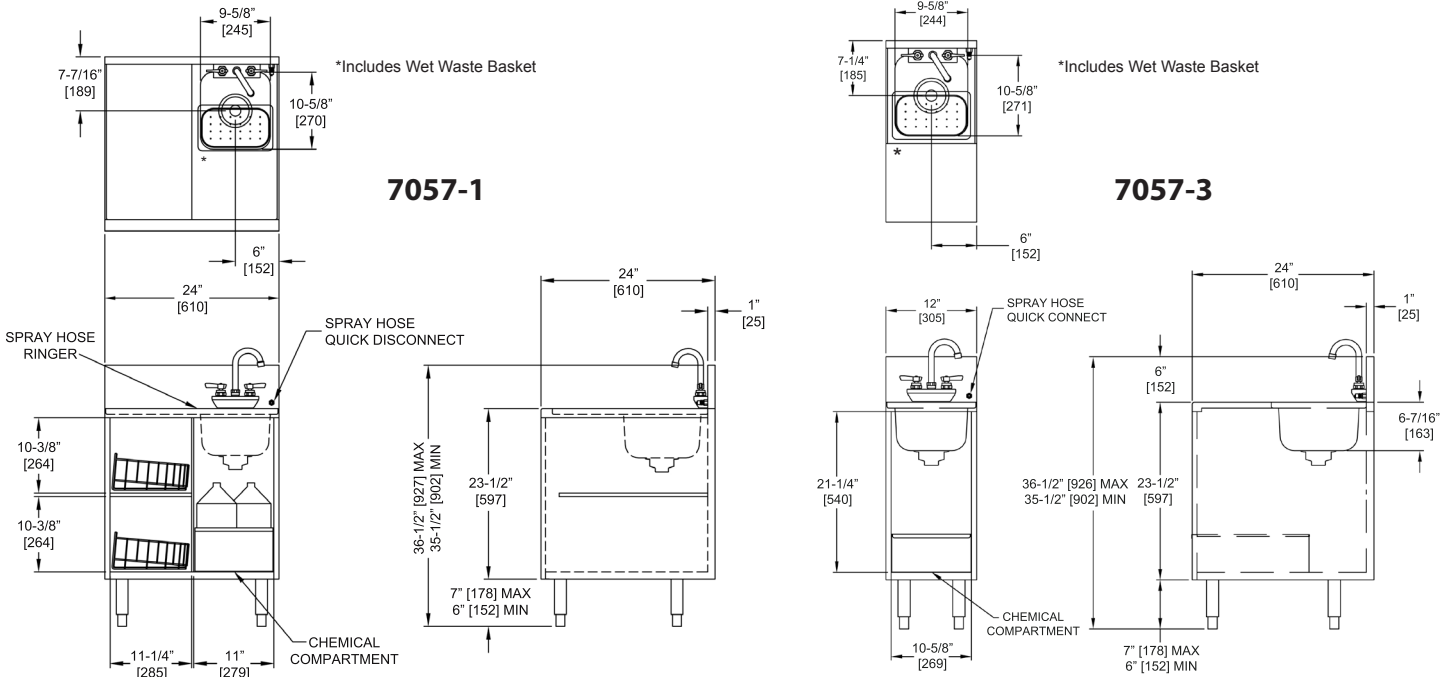
Area _____

Item No. _____

Model No. _____



MODEL NOS.	7057-1	7057-3
LENGTH IN. (mm)	24" (610)	12" (305)
DEPTH IN. (mm)	24" (610)	
HEIGHT IN. (mm)	36-1/2" (926) max.–35-1/2" (901) min.	
SHIP WT. lbs. (kg)	91 (42)	58 (26)
EXTERIOR	All exterior parts are made from stainless steel	
BACKSPASH	Stainless steel 6" with 1" return at top, mechanically fastened and sealed with steel support brackets	
TOP	All horizontal and vertical edges 1/4" radius with balled corners. Underside reinforced with welded brackets.	
SINK	All horizontal and vertical edges 1-3/4" radius with balled corners. Furnished with 1-1/2" stainless steel drain socket and duo-strainer. 10-5/8"x9-5/8"x6". Underside sound deadened.	
WATER FAUCET	Chrome plated, hot and cold, goose-neck faucet. Heavy-duty all brass construction, Must be ordered separately . Lead free faucet also available.	
SPRAY HOSE	Black, plastic spray head with four foot reinforced vinyl hose and quick disconnect fitting	
CHEMICAL COMPARTMENT	Removable stainless steel chemical pan	
LEGS	1-5/8" tubular, stainless steel with 1" adjustable stainless steel foot	
PLUMBING	Drain connection– 1-1/2" NPS Male. Hot and cold water connection– 3/8" O.D. copper supply tubes. Spray Hose– 3/8" O.D. copper supply tube.	
OPTIONAL ACCESSORIES	Glass racks (Part No. 50470-2)	N/A



**Faucet shown for clarity;
must be ordered separately*

Form No. SB06
09.19.2011



8300 West Good Hope Road • Milwaukee, WI 53223 • Phone 414.353.7060 • Fax 414.353.7069
Toll Free 800.558.5592 • E-Mail perlick@perlick.com • www.perlick.com

Perlick is committed to continuous improvement. Therefore, we reserve the right to change specifications without prior notice