

GLASS CHILLERS



MODELS

- FR24 SERIES
- FR36 SERIES
- FR48 SERIES
- FR60 SERIES



FR24



FR36



FR48

Perlick Features

- Heavy-duty construction
- 2" foamed-in-place insulation provides energy savings and durability
- Revolutionary insulation that has zero ozone depletion potential and zero global warming potential.
- Stainless steel interior standard
- Stainless or black vinyl coated exteriors
- Plug-in installation; no condensate plumbing required
- Quiet running, high efficient, balanced refrigeration system
- 24" front-to-back dimension matches depth of underbar stainless steel
- Reinforced door mullion will not bend or sag
- Dent-resistant heavy gauge doors
- Adjustable thermostat from -10° to 10°F; factory set at 0°
- Exclusive manual 6-hour defrost system prevents interior ice buildup
- Door frame heater ensures easy sliding doors
- Floor racks standard; shelving must be ordered separately if needed (2 shelves recommended)
- Optional third shelf for three, four and foot foot models adds 25% more glass storage



Form No. 120303
Rev. 02.21.2012



8300 West Good Hope Road • Milwaukee, WI 53223 • Phone 414.353.7060 • Fax 414.353.7069
Toll Free 800.558.5592 • E-Mail perlick@perlick.com • www.perlick.com

Size and Specifications

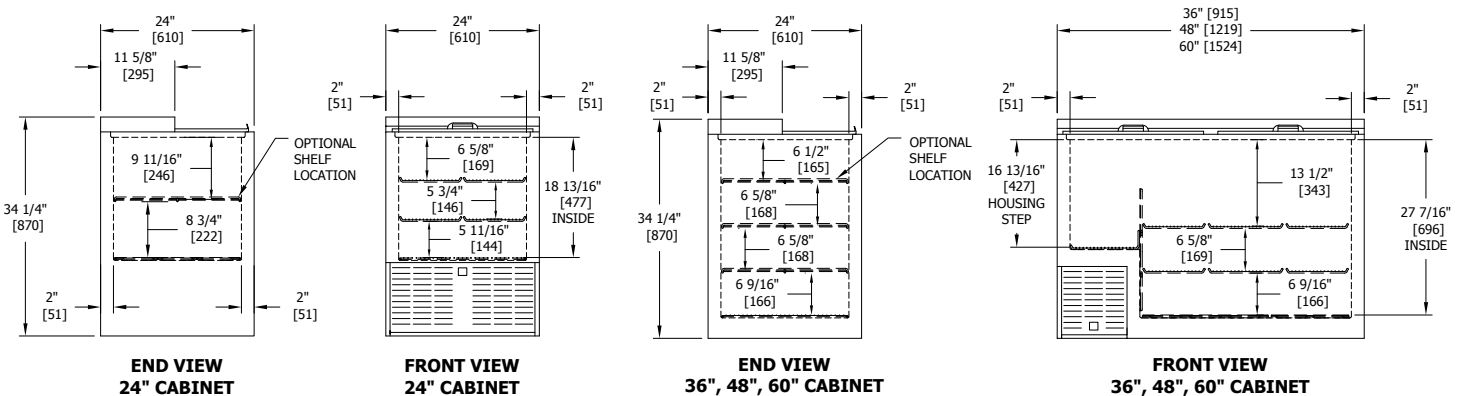
Glass Chillers



Job _____
 Area _____
 Item No. _____
 Model No. _____

MODEL NO.	FR24	FR36	FR48	FR60	
CABINET DIMENSIONS	Length - Inches (mm)	24" (610)	36" (915)	48" (1219)	60" (1524)
	Depth - Inches (mm)	24" (610)	24" (610)	24" (610)	24" (610)
	Height - Inches (mm)	34-1/4" (870)	34-1/4" (870)	34-1/4" (870)	34-1/4" (870)
INTERIOR CUBIC FOOT (m ³)	3.75 (0.10)	7.83 (0.22)	11.68 (0.33)	15.53 (0.44)	
PLATE CAPACITY*	135 Plates	215 Plates	300 Plates	400 Plates	
GLASS CAPACITY* (w/ 2 Optional Shelves)	90 Glasses	142 Glasses	214 Glasses	286 Glasses	
GLASS CAPACITY* (w/ 3 Optional Shelves)	N/A	172 Glasses	273 Glasses	363 Glasses	
CONDENSER UNIT H.P.	1/3	1/3	1/3	1/3	
RUNNING LOAD - AMPS	5.8	6.8	6.2	7.1	
SHIP WT. Lbs. (kg)	190 (86)	245 (111)	265 (120)	350 (159)	
INTERIOR	All models have stainless steel walls and floor				
EXTERIOR	Choice of black, stainless steel and all stainless. All tops are stainless steel. Black Option: Front and ends are black vinyl coated steel, back and bottom are galvanized. Stainless Steel Option: Front and ends are stainless steel, back and bottom are galvanized. All Stainless Option: Front, ends, back and bottom are stainless steel.				
DOORS (SLIDING)	Stainless steel top and bottom pans. Die cast handle.				
REFRIGERATION	R134a expansion valve system with hermetic condensing unit. Pulls out for service and cleaning.				
ELECTRICAL	115V, 60Hz., 1 Phase AC. Furnished with 6 foot NEMA 5-15P rubber plug-in cord (115V model only). Also available in 230V, 50HZ., 1 Phase AC. Carries CE marking of conformity.				
PLUMBING	None required. Moisture drains to self-evaporating condensing pan in machinery compartment.				
INSULATION	2" Foamed-in-place polyurethane insulation.				
TEMPERATURE RANGE	Adjustable from -10° to 10°F.				
VENTILATION	FR24 model is front vented. All other models require 2" clearance from wall either on left end or back of cabinet for proper air flow.				
DEFROST SYSTEM	Solid-state, push-button defrost system, manually initiated at the end of each day, automatically terminates after six hours. Evaporator automatically defrosts every 4 hours for approximately 20 minutes (time/temperature terminated).				
OPTIONAL ACCESSORIES	<ul style="list-style-type: none"> • Flat shelving • Divider shelving • Roller basket shelving • Set of 4 casters w/ brakes • 2', 3', 4' and 5' bottle rail (field installed) • Interior light 				

* Capacity calculations based on use of 3" dia. glass and 9-1/2" dia. x 1/2" thick plate.



Form No. 120303
 Rev. 02.21.2012



8300 West Good Hope Road • Milwaukee, WI 53223 • Phone 414.353.7060 • Fax 414.353.7069
 Toll Free 800.558.5592 • E-Mail perlick@perlick.com • www.perlick.com

Perlick is committed to continuous improvement. Therefore, we reserve the right to change specifications without prior notice