



The Signature of Quality

FEDERAL INDUSTRIES

A Standex Company
215 Federal Avenue
Belleville, WI 53508-9201

Phone: 800-356-4206
Fax: 608-424-3234
Email: geninfo@federalind.com
Website: www.federalind.com

Project Name: _____

Item #: _____

Model #: _____ Qty: _____

Approval: _____

AIA#

SIS#

ELEMENTS™ REFRIGERATED SELF-SERVE HIGH PROFILE MERCHANDISER

Designed with impulse sales in mind. Get maximum return with presentation and value in mind without sacrificing performance.



MODEL	DIMENSIONS (Includes End Panels)
<input type="checkbox"/> ERSSHP378SC5	36.5 x 34.25 x 78 (in) 927 x 902 x 1981 (mm)
<input type="checkbox"/> ERSSHP478SC5	47 x 34.25 x 78 (in) 1194 x 902 x 1981 (mm)
<input type="checkbox"/> ERSSHP678SC5	71 x 34.25 x 78 (in) 1803 x 902 x 1981 (mm)

STANDARD FEATURES

Model Features

- Adjustable black metal shelves with price tag molding. Shelves can be flat or slanted.
- Black exterior finish.
- Black powder coated interior.
- Front air intake & Front/Rear Discharge
- Energy saving night curtain.
- Air Filter
- Adjustable Leg Levelers

Refrigeration

- Electronic temperature controls maintain 38°-40° F / 3.3°-4.4°C case temperature.
Note: Case temperature will vary if the air curtain is disrupted.
- Cord and plug (NEMA L14-20P)
- Thermometer
- R449a Refrigerant

Shelving

- Adjustable black metal shelves price tag molding. Shelves can be flat or slanted.

Lighting

- Top mounted LED light and LED vertical lights.
- DLC Certified, IP66 rated.

Agency Approvals

- UL Safety and UL Sanitation listed
- DOE 2017 Compliant

OPTIONAL ACCESSORIES

- Optional Field Install Caster Kit.



WARRANTY*
One year Parts and Labor
2nd thru 5th year part
only service compressor
(U.S.A and Canada)

Note: Information is subject to change at any time.
Visit www.federalind.com for the most current specs.

Revised 02/18/2020

AIA#

ELEMENTS™ REFRIGERATED SELF-SERVE HIGH PROFILE MERCHANDISER

SIS#

Product Specifications

Intended Environment: Type I - Designed to operate in maximum ambient conditions of 75°F (24°C) and 55% relative humidity unless noted otherwise in system information below.

Zone	Intended Product To Be Displayed	Avg Prod Temp °F/°C
All	Packaged Refrigerated Products	38°F / (3.3°C)

DIMENSION: xx"/(mm)

DIMENSION TOLERANCE +/- 0.25 (6.4)

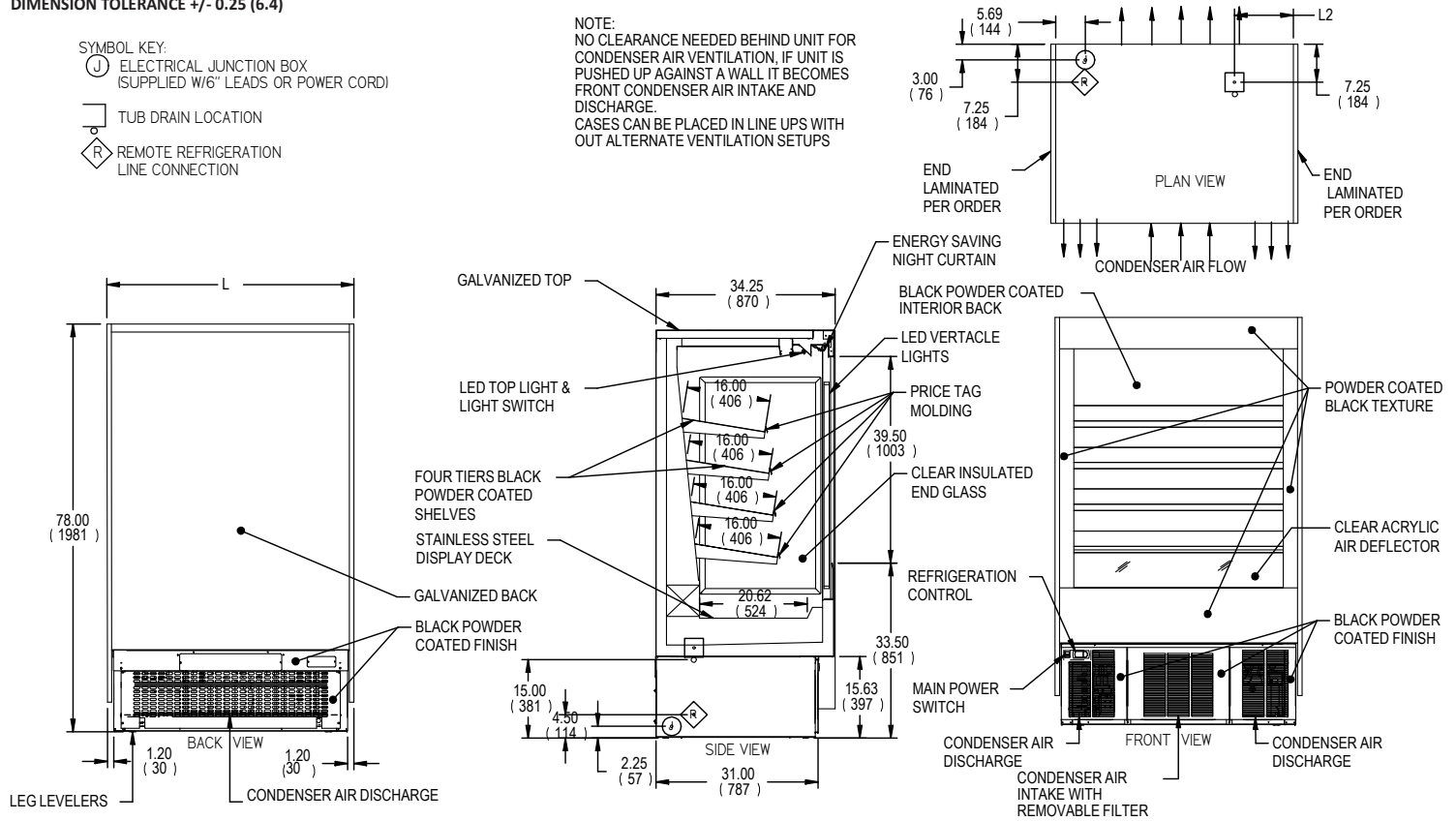
SYMBOL KEY:

Ⓝ ELECTRICAL JUNCTION BOX
(SUPPLIED W/6" LEADS OR POWER CORD)

Ⓜ TUB DRAIN LOCATION

Ⓡ REMOTE REFRIGERATION
LINE CONNECTION

NOTE:
NO CLEARANCE NEEDED BEHIND UNIT FOR
CONDENSER AIR VENTILATION, IF UNIT IS
PUSHED UP AGAINST A WALL IT BECOMES
FRONT CONDENSER AIR INTAKE AND
DISCHARGE.
CASES CAN BE PLACED IN LINE UPS WITH
OUT ALTERNATE VENTILATION SETUPS



E3935 REV

MODEL	DIMENSIONS				SHIPPING WHT		TIER	SELF CONTAINED 2-WIRE PLUS GROUND 208-240/60/1	NEMA PLUG
	L	D	H1	UNITS	LBS	KILO			
ERSSHP378SC5	36	34.25	78	in.	785	356	4	1/2 HP - 10 AMPS	NEMA 6-20P
	914	895	1981	mm.					
ERSSHP478SC5	47.25	34.25	78	in.	875	397	4	3/4 HP - 13 AMPS	NEMA 6-20P
	1200	895	1981	mm.					
ERSSHP678SC5	71.25	34.25	78	in.	1170	531	4	1 HP - 15 AMPS	NEMA 6-20P
	1810	895	1981	mm.					

- Case temperature will vary if the air curtain is disrupted.
- Electrical Requirement - The minimum circuit ampacity and maximum fuse size is 20 amps.
A 208-240 volt, 60 hertz, 1 phase, 3 wire plus ground power supply.
- Refrigerated cases are designed to operate in a maximum of 75°F (24°C) ambient and 55% relative humidity.
- Due to continuing engineering improvements, specifications are subject to change without notice.



The Signature of Quality®

FEDERAL INDUSTRIES

A Standex Company

215 Federal Avenue, Belleville, Wisconsin 53508-9201

Phone: 800-356-4206

Fax: 608-424-3234

Email: Geninfo@Federalind.com

Website: Federalind.com