



*The Signature of Quality*

### FEDERAL INDUSTRIES

A Standex Company  
215 Federal Avenue  
Belleville, WI 53508-9201

Phone: 800-356-4206  
Fax: 608-424-3234  
Email: geninfo@federalind.com  
Website: www.federalind.com

Project Name: \_\_\_\_\_

Item #: \_\_\_\_\_

Model #: \_\_\_\_\_ Qty: \_\_\_\_\_

Approval: \_\_\_\_\_

AIA#

SIS#

## CHOCOLATE & CONFECTIONERY CASE

### CLIMATE CONTROLLED

MODEL	DIMENSIONS ( Includes End Panels )
<input type="checkbox"/> FCCR4	48 x 24 x 48 (in) 1219 x 610 x 1219 (mm)
<input type="checkbox"/> FCCR5	60-3/4 x 24 x 48 (in) 1543 x 610 x 1219 (mm)
<input type="checkbox"/> FCCR6	72 x 24 x 48 (in) 1829 x 610 x 1219 (mm)

### NON-REFRIGERATED

MODEL	DIMENSIONS ( Includes End Panels )
<input type="checkbox"/> FCC4	48 x 24 x 48 (in) 1219 x 610 x 1219 (mm)
<input type="checkbox"/> FCC5	60-3/4 x 24 x 48 (in) 1543 x 610 x 1219 (mm)
<input type="checkbox"/> FCC6	72 x 24 x 48 (in) 1829 x 610 x 1219 (mm)

Blend elegant styling, superb merchandising flexibility, and craftsmanship to maximize profits. Designed for continuous case line-ups.



### STANDARD FEATURES

#### Model Features

- Hinged, curved front safety glass tilts back for easy cleaning.
- Reflective rear sliding service doors with lock.
- Mirrored interior ends.
- All welded base construction with laminated exterior.
- Gold trim standard. Silver trim optional.
- Removable sliding rear doors, shelf lights, shelf supports, and shelves.
- Rear storage area with lock.
- Easily accessible control panel.
- White display deck.

#### Added features for climate-controlled case.

- Condensate evaporator provided for a totally self-contained system.
- Customer adjustable temperature and humidity controls balance case environment to prevent discoloration, dehydration, and loss of gloss.
- Climate-controlled rear storage area with lock.
- R513a Refrigerant

#### Added features for non-refrigerated cases.

- Vent system to reduce heat build-up from the lights.

#### Shelving

- Three tiers of adjustable tempered glass shelves.

#### Lighting

- 3500K LED top and individual shelf lights. Lights are independently wired.
- DLC Certified, IP66 rated

#### Agency Approvals

- UL Safety and UL Sanitation Listed.  
DOE 2017 Compliant.

### OPTIONAL ACCESSORIES

- Special Exterior Finishes
- Top Rear Wrapping Board
- Silver Trim
- Casters or Legs
- Cord and Plug



WARRANTY\*  
One year Parts and Labor  
2nd thru 5th year part  
only service compressor  
(U.S.A and Canada)

Note: Information is subject to change at any time.  
Visit [www.federalind.com](http://www.federalind.com) for the most current specs.

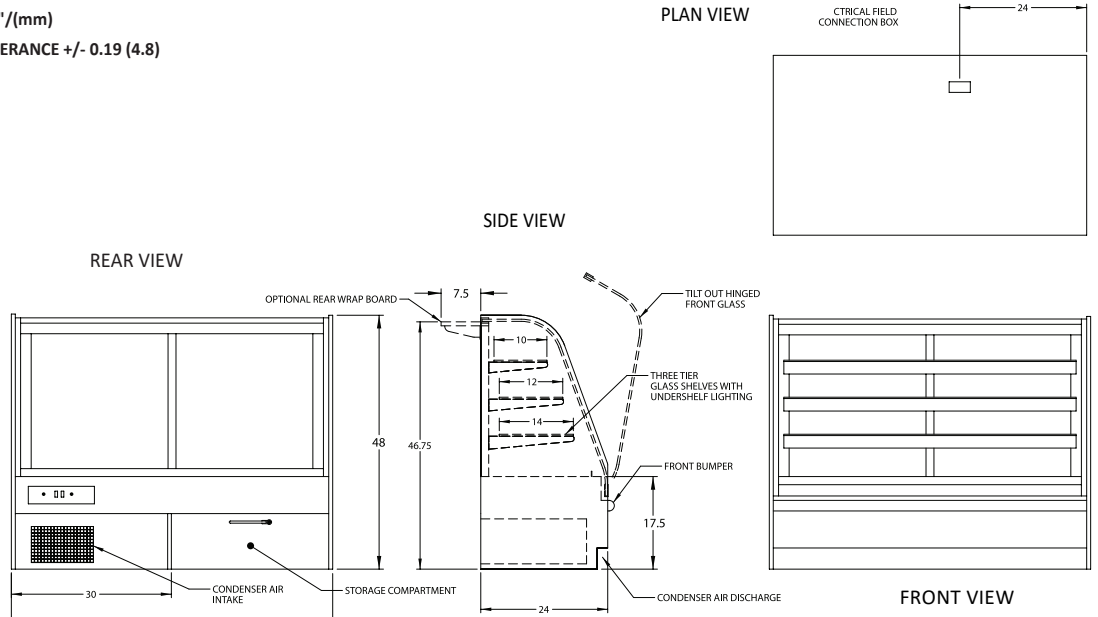
Revised 02/17/2020

AIA#	<b>CHOCOLATE &amp; CONFECTIONERY CASE</b>
SIS#	<b>Product Specifications</b>

Intended Environment: Type I - Designed to operate in maximum ambient conditions of 75°F (24°C) and 55% relative humidity unless noted otherwise in system information below.

Zone	Intended Product To Be Displayed	Avg Prod Temp °F/°C
All	Packaged Refrigerated Products	38°F / (3.3°C)

**DIMENSION: xx"/(mm)**  
**DIMENSION TOLERANCE +/- 0.19 (4.8)**



MODEL	DIMENSIONS*				SHIPPING WHT		MAX. CAPACITY CANDY TRAYS	REMOTE 120/60/1 REAR MOUNT
	L	D	H1	UNITS	LBS	KILO		
CLIMATE CONTROLLED								
FCCR-4	48	24	48	in.	635	288	16	9 AMPS
	1219	619	1219	mm.				
FCCR-5	60.75	24	48	in.	750	340	28	9 AMPS
	1543	619	1219	mm.				
FCCR-6	72	24	48	in.	850	386	32	10 AMPS
	1829	619	1219	mm.				
NON-REFRIGERATED								
FCC-4	48	24	48	in.	585	131	16	2 AMPS
	1219	619	1219	mm.				
FCC-5	60.75	24	48	in.	640	290	28	2 AMPS
	1543	619	1219	mm.				
FCC-6	72	24	48	in.	695	315	32	2 AMPS
	1829	619	1219	mm.				

- Standard Tray Sizes: 7 x 8 x 1-1/4; 7 x 10 x 1-1/4; 7 x 14 x 1-1/4
- Due to continuing engineering improvements, specifications are subject to change without notice.

DOE 2017 Energy Efficiency Compliant



**FEDERAL INDUSTRIES**  
 A Standex Company  
 215 Federal Avenue Belleville, Wisconsin 53508-9201

**Phone:** 800-356-4206  
**Fax:** 608-424-3234  
**Email:** Geninfo@Federalind.com  
**Website:** Federalind.com