

Project	Quantity	Item #
Model Specified:		CSI Section 11400

## Wine Refrigerator Hinged Glass Door Models/Self-Contained

## One & Two Section Models, 26" Deep



**Model RH126W-WR02**  
(shown with optional casters)



1-Section Full Length Door, Hinged Left	RH126W-WR01
1-Section Full Length Door, Hinged Right	RH126W-WR02
2-Section Full Length Door, Hinged Left/Right	RH226W-WR01

Traulsen's 26" deep wine refrigerators are ideal for use in front of house applications where storage and display of fine wine products requires the very best.

Featuring stainless steel construction, hinged glass doors and modern LED lighting, these high quality cabinets provide an attractive, durable platform, which enhances visibility of your wine selection in the bar or dining area.

Each model is equipped with a full compliment of specially designed wine racks. These slightly incline the bottles to keep the cork moist, limit sedimentation, and make reading the labels easier. Preset from the factory to operate at a 53-57°F serving temperature, their Traulsen Smart Control allows precise adjustment to suit all types of wines.

## Standard Product Features

- Traulsen's Smart Control With LED Display
- Stainless Steel Exterior & Interior
- Adjustable For Different Wine Temps, Factory Preset Temperature At 53°F to 57°F
- Full Length Hinged Glass Doors With Locks
- Self-Closing Doors With Stay Open Feature At 120°F
- Guaranteed For Life Cam-Lift Hinges
- LED Lights With On/Off Switch
- Stainless Steel Breaker Caps
- 11-15 Wine Bottles Per Rack, Eight Racks Per Section
- Magnetic Snap-In EZ-Clean Door Gasket(s)
- Stainless Steel One-Piece Louver Assembly
- 9' Cord & Plug Attached
- Set of Four (4) 6" High Adjustable Stainless Steel Legs
- Three Year Parts And Labor Warranty
- Five Year Compressor Warranty

## Options & Accessories

- Stainless Steel Finished Back With Rear Louvers
- Kool Klad Exterior Laminate Decor
- Set of Four (4) 6" High Casters In Lieu of Legs
- Set of Four (4) 4-5/8" High Casters In Lieu of Legs
- 4-1/2" High Stainless Steel Base In Lieu of Legs
- 6" High Stainless Steel Kickplate (for use with standard legs)



Listed by Underwriters Laboratories Inc., to U.S. and Canadian safety standards and Listed by NSF International.

Approval: \_\_\_\_\_

**TRAUlsen**  
4401 BLUE MOUND RD.  
PHONE 1 (800) 825-8220  
Website: [www.traulsen.com](http://www.traulsen.com)

FT. WORTH, TX 76106  
FAX-MKTG. 1 (817) 624-4302

Project	Quantity	Item #
Model Specified:		CSI Section 11400

## Specifications

### Construction, Hardware and Insulation

Cabinet exterior front, one piece sides, louver assembly are constructed of 20 gauge stainless steel with #4 finish. Cabinet interior is constructed of stainless steel. The exterior cabinet top, back and bottom are constructed of heavy gauge aluminized steel. A set of four (4) adjustable 6" high stainless steel legs are included.

Hinged glass doors are equipped with a, removable plug cylinder locks and guaranteed for life cam-lift, gravity action, self-closing metal, glide hinges with stay open feature at 120°. Doors have seamless, polished metal corners.

Gasket profile and Santoprene® material simplify cleaning and increase overall gasket life. Anti condensate heaters are located behind each door opening.

Cabinet is insulated with an average of 2" thick high density, non-CFC, foamed in place polyurethane.

DIMENSIONAL DATA	RH126W	RH226W
Net capacity cu. ft.	19.1 (541 cu l)	40.8 (1156 cu l)
Length - overall in.	29 <sup>7</sup> / <sub>8</sub> (75.9 cm)	58 (147.3 cm)
Depth - overall in.	29 (73.6 cm)	29 (73.6 cm)
Depth - less handle in.	27 <sup>3</sup> / <sub>4</sub> (69.4 cm)	27 <sup>3</sup> / <sub>4</sub> (69.4 cm)
Depth - over body in.	26 (66.0 cm)	26 (66.0 cm)
Depth - door open 90° in.	51 <sup>1</sup> / <sub>16</sub> (131.3 cm)	51 <sup>1</sup> / <sub>16</sub> (131.3 cm)
Clear door width in.	21 <sup>1</sup> / <sub>2</sub> (54.6 cm)	21 <sup>1</sup> / <sub>2</sub> (54.6 cm)
Clear full-door height in.	57 <sup>5</sup> / <sub>8</sub> (146.3 cm)	57 <sup>5</sup> / <sub>8</sub> (146.3 cm)
Height - overall on 6" legs <sup>3</sup>	83 <sup>1</sup> / <sub>4</sub> (211.5 cm)	83 <sup>1</sup> / <sub>4</sub> (211.5 cm)
Bottle Capacity Per Section <sup>4</sup>	88-120	176-240
No. Standard Racks Per Section	8	16
ELECTRICAL DATA		
Voltage	115/60/1	115/60/1
Feed wires with Ground	3	3
Full load amperes	8.0	8.5
REFRIGERATION DATA		
Refrigerant	R-450A	R-450A
Refrigerant Charge Amount	14 oz	24 oz
BTU/HR H.P.	2220( <sup>1</sup> / <sub>2</sub> HP)	2220( <sup>1</sup> / <sub>2</sub> HP)

### NOTES

NOTE: Figures in parentheses reflect metric equivalents.

1= For shipping weights and dimensions please refer to spec sheet form TR35875.

3= Based on a 90 degree F ambient and 20 degree F evaporator. For information on remote models, please refer to form TR35837.

3= 12" Top clearance preferred for optimum performance and service access.

4= Actual capacity may vary depending upon bottle dimensions.

### Refrigeration System

A top mounted, self-contained, balanced refrigeration system using environmentally friendly, non-flammable R-450A refrigerant is conveniently located behind the one piece louver assembly. It features an easy to clean front facing condenser, thermostatic expansion valve, air-cooled hermetic compressor, large, high humidity evaporator coil located outside the food zone and a top mounted non-electric condensate evaporator. Biased return air duct protects against introduction of warm kitchen air, promoting even temperature maintenance and efficient operation. A 9' cord and plug is provided. Standard operating temperature is 53 to 57°F, adjustable for different wine temperatures.

### Controller

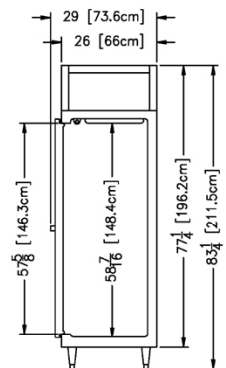
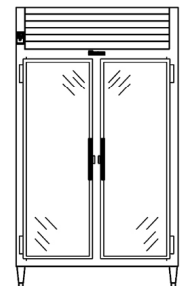
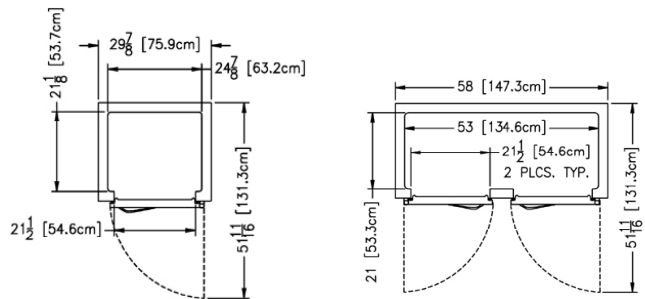
Traulsen's Smart Control features advanced control algorithms and sophisticated diagnostic capabilities. Smart sensors will adapt the operation of the refrigeration system to a variety of environments and usage patterns. The Smart Control offers a complete set of visual alarms designed to alert the user to critical events. In the event of an alarm, a dedicated Alarm LED will illuminate, informing the user of the critical event and describing the event in the large, easy to read full text display.

### Interior

Standard interior arrangements include (8) wine racks per section, bottle capacity 11-15 wine bottles per rack<sup>4</sup>.

### Warranties

Both a three year parts and labor warranty and a five year compressor warranty are provided standard.



### Equipped With One NEMA 5-15 P Plug

NOTE: Full load amps and plug style may vary depending on electrical options chosen and condensing unit employed.

NOTE: When ordering please specify: Voltage, Hinging, Door Size, Options and any additional warranties.

Continued product development may necessitate specification changes without notice.

Part No. TR35948 (REV. 01-07-19)

TRAULSEN  
4401 BLUE MOUND RD.  
PHONE 1 (800) 825-8220  
Website: [www.traulsen.com](http://www.traulsen.com)

FT. WORTH, TX 76106  
FAX-MKTG. 1 (817) 624-4302

**Traulsen**