



Your Solutions Partner

Specifications

F.O.B Sedalia, Missouri 65301



390-25
(Shown with optional tray slide)

OPTIONS:

- Trayslides
- Kick plates
- 5" casters, 2 swivel w/locks
- Cutouts in top
- Drop brackets on tray slide
- Sliding doors
- Door locks
- Shorten drip trough
- Veneered plastic laminate panels on body
- Special powder coat painted body
- Duplex outlet
- 6' cord and plug
- Body latches
- Carving/tray shelves boards
- Stainless steel dish shelf
- Tier of stainless steel angle sides
- Open base - omit undershelves
- Special lengths

AGENCY LISTINGS:



DUKE MANUFACTURING CO.
2305 N. Broadway
St. Louis, MO 63102

800.735.3853 Toll Free
314-231-1130 In Missouri
314.231.5074 Fax
www.dukemfg.com

SS-DM-00014-ASC-10

Approval Stamp(s):

PRODUCT INFORMATION:

PROJECT: _____
ITEM: _____
QUANTITY: _____

MODEL:

AeroServ Serving Systems Urn Stand Units

- 389-25** 32" length unit
- 390-25** 46" length unit

TOP:

- 20 gauge, 300 Series stainless steel\
- Stainless steel drip trough on operator or customer side
- 1" cast brass drain and plug
- Removable stainless steel grid

BODY:

- Paint grip or stainless steel
- Choice of (12) powder coat paint colors (must choose one)
 - #217105 - Designer White
 - #217103 - Natural Almond
 - #217150 - Orange
 - #217154 - Racing Red
 - #217107 - Hollyberry Red
 - #217120 - Sky Blue
 - #217127 - Fence Green
 - #217152 - Stone Gray
 - #217102 - Silver Hammer
 - #217113 - Brown Kickplate
 - #217101 - Semi-Gloss Black
 - #217125 - Textured Black
- Flanged or channeled edges
- Open at operator's side
- Mounted on 6" stainless steel legs with adjustable feet

SHORT FORM SPECIFICATIONS:

Duke AeroServ Serving Systems - Urn Stand Units - Top shall be 20ga s/s, 300 series Stainless Steel flanged down edges against body, 4" wide s/s trough, s/s removable anti-splash grill, 1" brass drain, 20ga s/s body & under shelves, 6"H s/s legs & adjustable feet

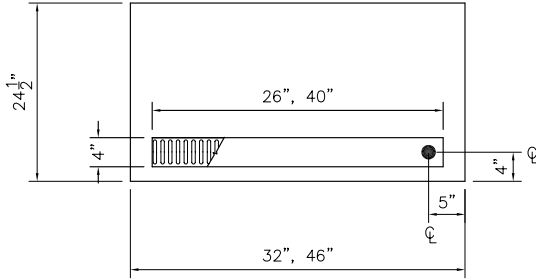
AeroServ

AEROSERV SERVING SYSTEMS

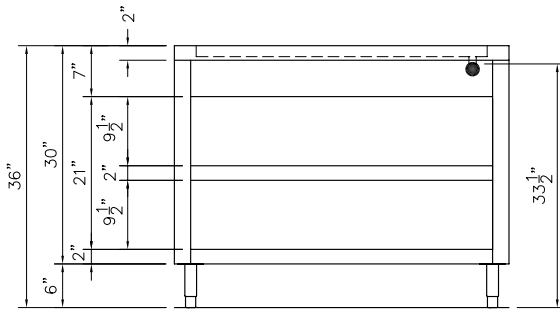
Urn Stand

- 389-25** 32" length unit
- 390-25** 46" length unit

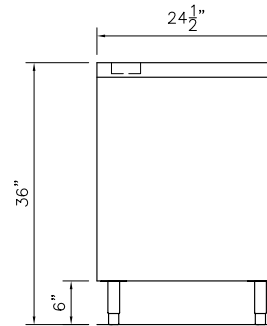
LEGEND
● - DRAIN LOCATION



TOP VIEW



FRONT VIEW



RIGHT SIDE VIEW

DIMENSIONS:

Freight Class: 150

Model	Length		Width		Height		Cube ft. crated	Weight	
	in.	cm	in.	cm	in.	cm		lbs	kg
389-25	32	81.3	24-1/2	62.2	36	91.4	27.6	217	98.6
390-25	46	116.8	24-1/2	62.2	36	91.4	37.7	274	124.6



DUKE MANUFACTURING CO.

2305 N. Broadway
St. Louis, MO 63102

800.735.3853 Toll Free
800.231.1130 In Missouri
314.231.5074 Fax
www.dukemfg.com

Specification subject to change