



"Your Solutions Partner"

# Specifications

F.O.B. Sedalia, Missouri 65301



**AHC-7M**  
Shown with optional Corian® top.

### OPTIONS:

- 8" deep cold pan
- Ice cooled
- Corian® top with cutouts
- Stainless steel legs
- 220v - 50 Hz compressor
- Condensate evaporator - **COND-EVAP**
- Designer sneeze guards (**TS530-xx Series**)
- EconoMate Style Sneeze Guards - **AECY**
- 3-bar tray slides on hinged brackets - **AHC-xM-TSHD**
- 3-bar tray slides on fixed brackets - **AHC-xM-TSFX**
- Heritage Buffet tray slides - 12"W, 3 rubbing tracks, S/S hinged brackets
- Enclosed storage
- Fluorescent lights beneath buffet shelf
- Canopy with brackets only
- Veneer panels
- Solid tray slides - **SOLID-HD/FX**
- Laminated tray slides
- Kickplates

**DUKE MANUFACTURING CO.**  
2305 N. Broadway  
St. Louis, MO 63102

800.735.3853 Toll Free  
314.231.1130 In Missouri  
314.231.5074 Fax  
www.dukemfg.com

Approval Stamp(s):

### PROJECT INFORMATION:

PROJECT: \_\_\_\_\_  
ITEM: \_\_\_\_\_  
QUANTITY: \_\_\_\_\_

### MODEL:

## Duke - Salad Bars Mechanically Assisted Ice

- AHC-5M** 74"L cold pan
- AHC-6M** 88"L cold pan
- AHC-7M** 102"L cold pan
- AHC-8M** 116"L cold pan

### TOP:

- Heavy gauge, 300 Series stainless steel
- Edges flanged down into stainless steel liner

### BODY:

- Fully enclosed
- Paint grip or stainless steel
- Choice of (12) powder coat paint colors (must choose one):
  - #217105 - Bright White
  - #217103 - Natural Almond
  - #217150 - Orange Red
  - #217154 - Racing Red
  - #217107 - Hollyberry Red
  - #217120 - Sky Blue
  - #217127 - Fence Green
  - #217152 - Stone Gray
  - #217102 - Duke Silver
  - #217113 - Brown Kickplate
  - #217101 - Semi-Gloss Black
  - #217125 - Textured Black
- Reinforced as required
- 5" diameter, NSF approved polyurethane casters, two w/brakes

### MECHANICAL ASSISTED ICE PAN:

- Heavy gauge stainless steel
- 5" deep x 19-7/8" front to back
- 2" styrene insulation on ends
- 1" urethane on bottom and sides
- Drain and plug, ball valve and hose

### REFRIGERATION:

- Refrigerant coil - R134A
- Condensing unit, 120 volt, single phase
- Controls, electric cord and plug
- Removable stainless steel louvered grille for compressor compartment

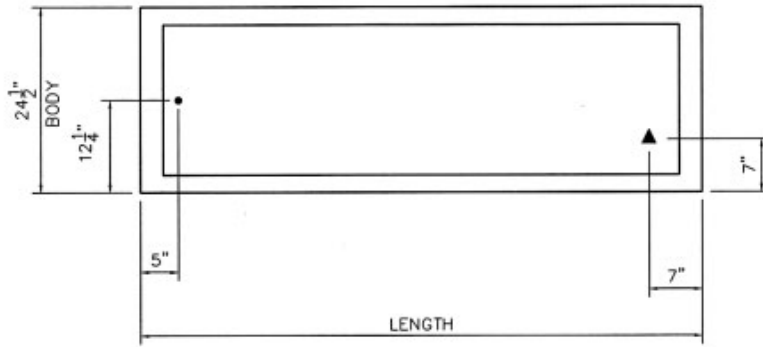
### SHORT FORM SPECIFICATIONS:

**Duke - Salad Bars.** Top shall be constructed of heavy gauge, 300 Series stainless steel, with edges flanged down into stainless steel cold pan liner. Body to be fully enclosed, formed from heavy gauge, cold-rolled, paint-grip steel. Body shall be paint-grip steel with powder coat paint or stainless steel, as specified by customer. Body shall be local reinforcements as required. Mechanically assisted ice pan to have heavy gauge stainless steel construction. Cold pan shall be 5" deep by 19-7/8" front to back. Unit shall be insulated on four sides with 2" styrene on ends and on bottom and sides with 1" urethane. Liner to be complete with drain and plug, ball valve and hose. Unit equipped with refrigerant coil, condensing unit, controls and electric cord and plug. Compressor compartment shall have removable stainless steel louvered grille located at one end of salad bar. Unit to be mounted on 5" diameter, NSF approved, polyurethane casters, two with brakes, all non-marking.



**DUKE - SALAD BARS  
MECHANICALLY ASSISTED ICE**

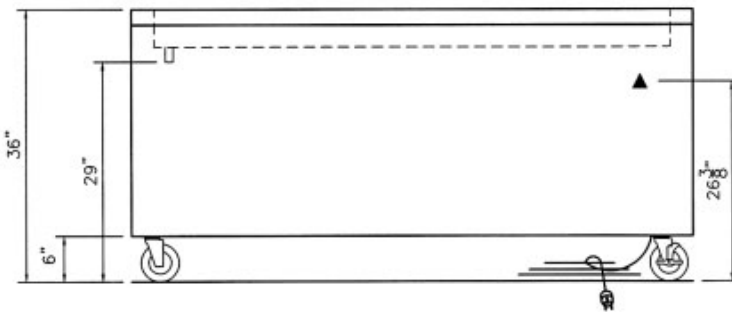
- AHC-5M** 74"L cold pan
- AHC-6M** 88"L cold pan
- AHC-7M** 102"L cold pan
- AHC-8M** 116"L cold pan



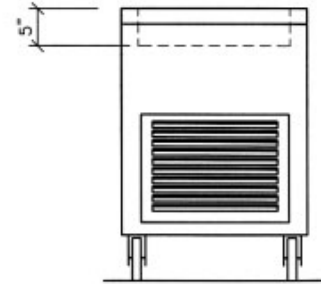
LEGEND	
▲	ELECTRICAL CONNECTION
●	DRAIN LOCATION

TOP VIEW

FRONT VIEW



SIDE VIEW



**SPECIFICATIONS:**

Model	Length		Body Width		Height w/o canopy		Cold Pan Size in.			Cube ft. crated	Weight	
	in.	cm	in.	cm	in.	cm	L	W	D		lbs.	kg
AHC-5M	74	188.0	24-1/2	62.2	36	91.4	68	19-7/8	5	42.0	500	227.3
AHC-6M	88	223.5	24-1/2	62.2	36	91.4	82	19-7/8	5	49.8	580	263.6
AHC-7M	102	259.1	24-1/2	62.2	36	91.4	96	19-7/8	5	57.5	660	300.0
AHC-8M	116	294.6	24-1/2	62.2	36	91.4	110	19-7/8	5	65.2	740	336.4

**ELECTRICAL SPECIFICATIONS:**

Model	Condensing Unit			NEMA
	HP	Amps	Volts	
AHC-5M	1/4	5.2	120	5-15
AHC-6M	1/4	5.2	120	5-15
AHC-7M	1/4	5.2	120	5-15
AHC-8M	1/4	5.2	120	5-15



**"Your Solutions Partner"**

**DUKE MANUFACTURING CO.**  
2305 N. Broadway  
St. Louis, MO 63102

800.735.3853 Toll Free  
314.231.1130 In Missouri  
314.231.5074 Fax  
www.dukemfg.com

Specifications subject to change