



"Your Solutions Partner"

# Specifications

F.O.B. Sedalia, Missouri 65301



**ACU-32SS**  
with optional casters



**ATU-32SS**  
with optional casters

### OPTIONS:

- Tray slides - **A3BTS-HD/FX, ASOLID-HD/FX**
- Duplex outlet - **ACMOD-15, -16, -17, -18**
- 6' cord and plug - **ACORD**
- Special corner angles
- Veneered plastic laminate panels on body
- Powder coat paint colors
- 5" swivel casters, 2 w/locks - **AACA-SW**
- Kickplates
- Body latches - **14695**
- Cutouts - **ACMOD-8, -9, -10, -11**
- Carving boards/shelves

### AGENCY LISTING:



**DUKE MANUFACTURING CO.**  
2305 N. Broadway  
St. Louis, MO 63102

800.735.3853 Toll Free  
314.231.1130 In Missouri  
314.231.5074 Fax  
www.dukemfg.com

Approval Stamp(s):

### PROJECT INFORMATION:

PROJECT: \_\_\_\_\_  
ITEM: \_\_\_\_\_  
QUANTITY: \_\_\_\_\_

### MODEL:

## AeroServ Serving Systems Corner & Triangle Units

- ACU-32** Square unit
- ATU-32** Triangular unit - 45° or 90°

### TOP:

- 20 gauge, 300 Series stainless steel
- Sound-deadening vinyl foam tape

### BODY:

- Paint grip or stainless steel
- Choice of (12) powder coat paint colors (must choose one):
 

<input type="checkbox"/> #217105 - Bright White	<input type="checkbox"/> #217103 - Natural Almond
<input type="checkbox"/> #217150 - Orange Red	<input type="checkbox"/> #217154 - Racing Red
<input type="checkbox"/> #217107 - Hollyberry Red	<input type="checkbox"/> #217120 - Sky Blue
<input type="checkbox"/> #217127 - Fence Green	<input type="checkbox"/> #217152 - Stone Gray
<input type="checkbox"/> #217102 - Duke Silver	<input type="checkbox"/> #217113 - Brown Kickplate
<input type="checkbox"/> #217101 - Semi-Gloss Black	<input type="checkbox"/> #217125 - Textured Black
- Mounted on 6" stainless steel legs with adjustable feet
- Triangles must permanently attach to adjacent unit
- Welded together with local reinforcements

### SHORT FORM SPECIFICATIONS:

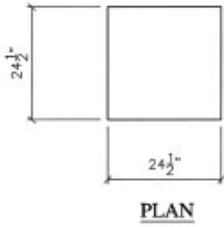
#### Duke AeroServ Serving Systems - Corner & Triangle Units.

Top shall be constructed of 20 gauge, 300 Series stainless steel with edges flanged down 2" against body at 90°, on all four sides. Vinyl foam tape shall be used between top and body for sound-deadening. Body to be free standing and formed of heavy gauge steel with specified powder coat paint color or 300 Series stainless steel. Body shall be mounted on 6" stainless steel legs with adjustable feet. When ordering, please provide rough sketch position of unit in line-up, and indicate which side is to be operator's side. Triangle units - must specify 45° or 90°. Must add **"PG"** to model number for Paint Grip Bodies; **"SS"** for Stainless Steel Bodies.

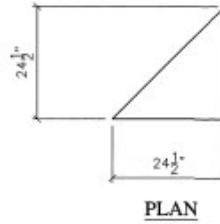
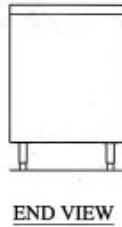
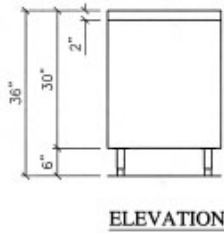
# AeroServ

## AEROSERV SERVING SYSTEMS CORNER & TRIANGLE UNITS

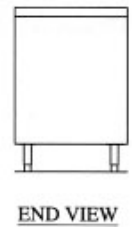
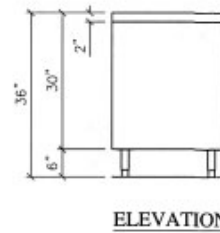
- ACU-32** Square unit
- ATU-32** Triangular unit - 45° or 90°



**ACU-32**



**ATU-32**



**DIMENSIONS:**

Freight Class: 100

Model	Length		Width		Height		Cube ft. crated	Weight	
	in.	cm	in.	cm	in.	cm		lbs.	kg
ACU-32	24-1/2	62.2	24-1/2	62.2	36	91.4	33.9	175	79.6
ATU-32	24-1/2	62.2	24-1/2	62.2	36	91.4	33.9	175	79.6



**"Your Solutions Partner"**

**DUKE MANUFACTURING CO.**  
2305 N. Broadway  
St. Louis, MO 63102

800.735.3853 Toll Free  
314.231.1130 In Missouri  
314.231.5074 Fax  
[www.dukemfg.com](http://www.dukemfg.com)

Specifications subject to change  
KaTom Restaurant Supply, Inc.

04/02

Printed in U.S.A.  
© 2002, Duke Manufacturing Co.

A.I.A. File No. 35-C-13

Catalog No. ASC-CORNER

AEROSERV SERVING SYSTEMS - CORNER & TRIANGLE UNITS