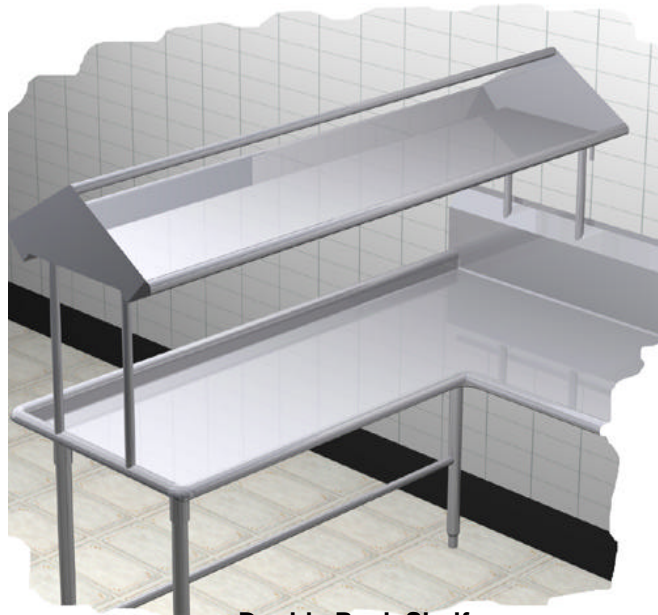


# Duke Specifications



"Your Solutions Partner"

F.O.B. St. Louis, Missouri 63102



**Double Rack Shelf**

**MODIFICATIONS:**

- Drainhole (for both units) - **DH-1**
- Flanged feet (for tables with casters - **SK-19**)
- Stainless steel welded lengthwise crossrail (both units) - **SK-58**
- Casters (for tables with legs) - **STC-1**

Special modifications may be added; consult the Accessories and Modifications specification sheet.

**AGENCY LISTING:**



**DUKE MANUFACTURING CO.**  
**2305 N. Broadway**  
**St. Louis, MO 63102**

**800.735.3853 Toll Free**  
**314.231.1130 In Missouri**  
**314.231.5074 Fax**  
**www.dukemfg.com**

**PROJECT INFORMATION:**

PROJECT: \_\_\_\_\_  
 ITEM: \_\_\_\_\_  
 QUANTITY: \_\_\_\_\_

**MODEL:**

**Duke Dishtables**  
**Rack Shelves**

**Double Service Rack Shelf**

- SDD-48** 48" length
- SDD-60** 60" length
- SDD-72** 72" length
- SDD-96** 96" length
- SDD-120** 120" length

**SHELF:**

- 14 gauge, 300 Series stainless steel
- "V" shaped edge front and rear
- 14 gauge, 300 Series, solid ends
- 1" OD tubular rack rest welded to ends

**UPRIGHTS:**

- 16 gauge stainless steel
- 1" OD
- Welded to S/S channel underbracing under shelf

**SHORT FORM SPECIFICATIONS:**

Duke Aerohot Dishables - Double Service Rack Shelf. Shelf to be constructed of 14 gauge, 300 Series stainless steel with "V" shaped edge on front and rear. 14 gauge, 300 Series stainless steel solid ends with 1" OD tubular rack rest welded to the ends. Uprights to be of 16 gauge stainless steel, 1" OD, welded to stainless steel channel underbracing under shelf.



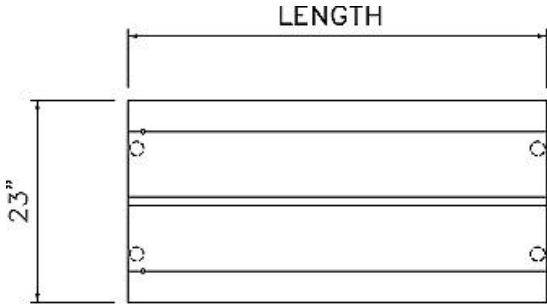
**DUKE DISHTABLES**  
**Rack Shelves -**  
**Double Service Rack Shelf**

- | Model                                   | Length      |
|---|-------------|
| <input type="checkbox"/> <b>SDD-48</b>  | 48" length  |
| <input type="checkbox"/> <b>SDD-60</b>  | 60" length  |
| <input type="checkbox"/> <b>SDD-72</b>  | 72" length  |
| <input type="checkbox"/> <b>SDD-96</b>  | 96" length  |
| <input type="checkbox"/> <b>SDD-120</b> | 120" length |

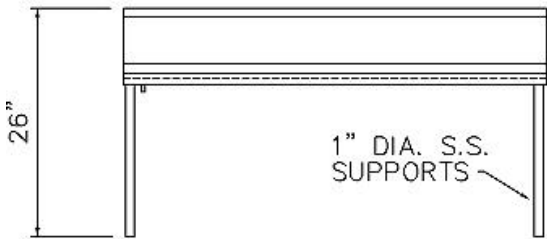
A.I.A. File No. 35-C-13

Catalog No. DISHRACKDBL

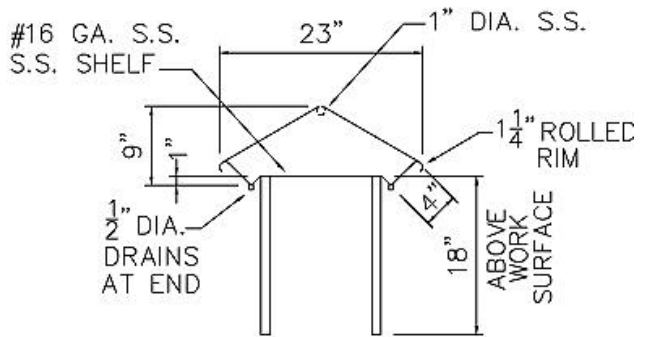
DUKE DISHTABLES - RACK SHELVES - DOUBLE



TOP VIEW



FRONT VIEW



RIGHT SIDE

**Double Service Solid Rack Shelves**

Model	Length		Weight		Cube ft. crated
	in.	cm	lbs.	kg	
SDD-48	48	121.9	80	36.3	16.0
SDD-60	60	152.4	95	43.1	20.0
SDD-72	72	182.9	110	49.9	24.0
SDD-96	96	243.8	140	63.5	32.0
SDD-120	120	304.8	170	77.1	40.0



"Your Solutions Partner"

**DUKE MANUFACTURING CO.**  
 2305 N. Broadway  
 St. Louis, MO 63102

800.735.3853 Toll Free  
 314.231.1130 In Missouri  
 314.231.5074 Fax  
[www.dukemfg.com](http://www.dukemfg.com)

Specifications subject to change

KaTom Restaurant Supply, Inc.

8/00

Printed in U.S.A.  
 ©2000, Duke Manufacturing Co.