



# Super HalfVac<sup>®</sup> PRO

## HIPSTYLE REDEFINED

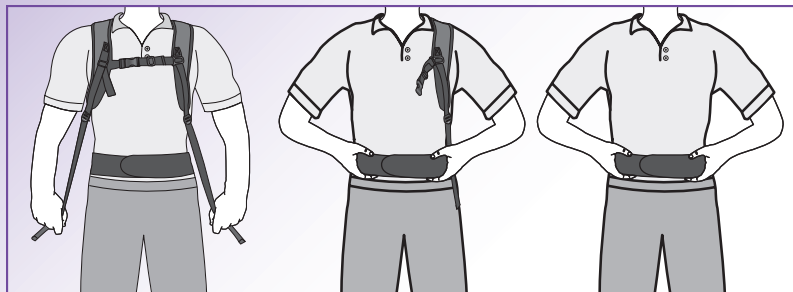
The Next Generation of versatility and performance in a lightweight, compact size.

# COMPACT VERSATILITY FOR EVERY USER

Wear it Well: Comfort, Cleaning Efficiency and Productivity

## WEAR OPTIONS

Three times the adaptability.



1 Wear with 2 straps and waist belt.

2 Wear with 1 strap and waist belt.

3 Wear with waist belt only.

## TAKE ON ANY TASK

Compact power to clean better.

The redesigned Super HalfVac Pro has become an instant hit with cleaning professionals for its efficiency, effectiveness and ease of use. The compact, lightweight design ensures worker comfort while providing the power and performance of a larger machine. The sleek hipstyle vacuum features a versatile carrying and harness system for maximum productivity and functionality.

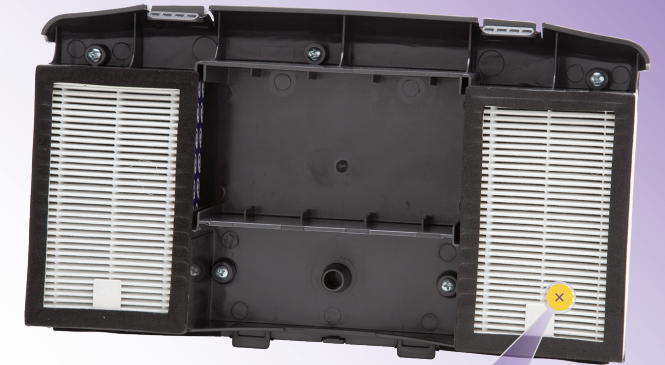


**HIPSTYLE OR BACKPACK**  
Versatile harness can be worn with or without shoulder straps depending on user preference.

**LUMBAR SUPPORT**  
Ergonomic, padded waist belt provides lower-back support for a balanced, comfortable fit.

**MAXIMUM PERFORMANCE**  
Sleek switch box design provides the user natural reach and quick access to the power button.

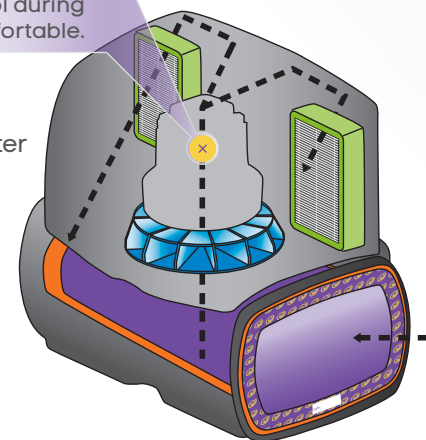
**PERFECT FOR SMALLER USERS**  
The lightweight Super HalfVac Pro has a low profile and comfortably fits smaller frames.



**HEALTHIER AIR**  
Four Level® Filtration w/HEPA captures and contains particulate, so allergy and asthma triggers are removed from the indoor environment.

**SELF-COOLING**  
Airflow is directed so that the Super HalfVac Pro's ultra-powerful motor remains cool during operation, keeping the operator comfortable.

- 1 Intercept Micro Filter
- 2 Micro Cloth Filter
- 3 Dome Filter
- 4 Dual HEPA Filter



---> Direction of Airflow

# THE PROTEAM DIFFERENCE.

## Productivity Reigns

Lightweight design allows for optimum mobility. Sweeping side-to-side vacuuming motion cleans more square footage in less time than a canister or upright vacuum. This ergonomically designed vacuum is up to the toughest cleaning challenges. Hipstyle design is a great entry point to show reluctant users the productivity and comfort benefits of backpack vacuums.

## Cost of Ownership - Built to Last

For 25 years, ProTeam has designed vacuums with durability and quality in mind. These vacuums are low maintenance and long lasting, with multi-year warranties to back them up.



	Super HalfVac PRO
Weight	10.5 lbs
Airflow	106 CFM
Static Lift	97 in
Power	1050 W
Amperage	8.5 A
Decibel	66 dBA
Capacity	6 qt. / 6.6 L
Four Level Filtration w/ HEPA	1060 sq. in total area
HEPA Filtration	99.97% at .3 microns
Warranty	3 years - parts, labor 1 year - motor 3 years - molded body parts
Certification	UL Listed to US and Canadian safety standards.

PERFORMANCE SPECS BASED ON MOTOR SPECS



[www.pro-team.com](http://www.pro-team.com)



866.888.2168 | [customerservice.proteam@emerson.com](mailto:customerservice.proteam@emerson.com)