

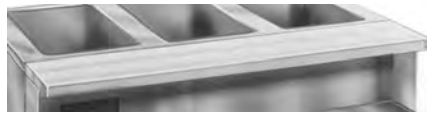


Profit from the Eagle Advantage®

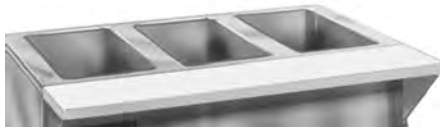
Specification Sheet



thermoplastic cutting board



hardwood cutting board



Richlite® heat-resistant cutting board



buffet shelf

Richlite® Heat-Resistant Cutting Boards

- 8" (203mm) wide, 1/8" (13mm) thick.
- High heat-resistant up to 360°F.
- 18 gauge stainless steel mounting brackets.

model #	for model	length		weight	
		in.	mm	lbs.	kg
RLB-2	HT2	33"	838	14	6.3
RLB-3	HT3	48"	1219	18	8.2
RLB-4	HT4	63½"	1613	21	9.5
RLB-5	HT5	79"	2007	24	10.9
RLB-6	HT6	94½"	2400	31	14.1

Buffet Shelves

- 15" (381mm)-wide, 18 gauge stainless steel shelf located 20" (508mm) above surface.
- Offered with clear polycarbonate sneeze guard on one or both sides, with or without infrared bullet lamps.

Buffet Shelves with Sneeze Guard...						Buffet Shelves with Sneeze Guard and Infrared Bullet Lamps...							
		...on one side		...on both sides				...on one side		...on both sides			
length	weight	lbs.	kg	model #	weight	lbs.	kg	model #	weight	lbs.	kg	model #	
													in.
33"	838	27	12.2	BS1-HT2	36	16.3	BS2-HT2	38	17.2	BS1-HT2-IL	46	20.9	BS2-HT2-IL
48"	1219	38	17.2	BS1-HT3	48	21.8	BS2-HT3	48	21.8	BS1-HT3-IL	62	28.1	BS2-HT3-IL
63½"	1613	58	26.3	BS1-HT4	68	30.8	BS2-HT4	76	34.5	BS1-HT4-IL	78	35.4	BS2-HT4-IL
79"	2007	83	37.6	BS1-HT5	93	42.2	BS2-HT5	114	51.7	BS1-HT5-IL	116	52.6	BS2-HT5-IL
94½"	2400	104	47.2	BS1-HT6	114	51.7	BS2-HT6	130	59.0	BS1-HT6-IL	132	59.9	BS2-HT6-IL

EAGLE GROUP

100 Industrial Boulevard, Clayton, DE 19938-8903 USA
 Phone: 302-653-3000 • Fax: 302-653-2065
 www.eaglegrp.com

Foodservice Division: Phone 800-441-8440
 MHC/Retail Display Divisions: Phone 800-637-5100

For custom configuration or fabrication needs, contact our SpecFAB® Division.
 Phone: 302-653-3000 • Fax: 302-653-3091 • e-mail: specfab@eaglegrp.com

AUTOQUOTES



EG30.20A Rev. 04/12

Spec sheets available for viewing, printing or downloading from our online literature library at www.eaglegrp.com

Eagle Foodservice Equipment, Eagle MHC, SpecFAB®, and Retail Display are divisions of Eagle Group. ©2012 by the Eagle Group

KaTom Restaurant Supply, Inc.

Item No.: _____
 Project No.: _____
 S.I.S. No.: _____

Hot Food Table Accessories— Cutting Boards, Shelves

MODELS:

- | | | | |
|---------------------------------|---------------------------------|--------------------------------|---------------------------------|
| <input type="checkbox"/> 353996 | <input type="checkbox"/> 353985 | <input type="checkbox"/> WB-* | <input type="checkbox"/> SS-* |
| <input type="checkbox"/> 353997 | <input type="checkbox"/> 353986 | <input type="checkbox"/> RLB-* | <input type="checkbox"/> SSP-* |
| <input type="checkbox"/> 353998 | <input type="checkbox"/> 353987 | <input type="checkbox"/> TS-* | <input type="checkbox"/> DSSP-* |
| <input type="checkbox"/> 353999 | <input type="checkbox"/> 353988 | <input type="checkbox"/> TSL-* | |
| <input type="checkbox"/> 354066 | <input type="checkbox"/> 355196 | | |

* See charts for full model numbers.

Thermoplastic Cutting Boards

- 8" (203mm) wide, 1/8" (13mm) thick.
- Polyethylene cutting board supported by stainless steel frame.
- 18 gauge stainless steel mounting brackets.

model #	for model	length		weight	
		in.	mm	lbs.	kg
353996	HT2	33"	838	12	5.4
353997	HT3	48"	1219	17	7.7
353998	HT4	63½"	1613	23	10.4
353999	HT5	79"	2007	30	13.6
354066	HT6	94½"	2400	37	16.8

Hardwood Cutting Boards

- 8" (203mm) wide, 1 1/4" (32mm) thick.
- Laminated hardwood cutting board.
- Available on stationary stainless steel or chrome-plated drop brackets.

with Stationary Brackets		with Drop Brackets		length		weight	
model #	for model	model #	for model	in.	mm	lbs.	kg
WB-HT2	HT2	WB-DB-HT2	HT2	33"	838	14	6.3
WB-HT3	HT3	WB-DB-HT3	HT3	48"	1219	18	8.2
WB-HT4	HT4	WB-DB-HT4	HT4	63½"	1613	21	9.5
WB-HT5	HT5	WB-DB-HT5	HT5	79"	2007	24	10.9
WB-HT6	HT6	WB-DB-HT6	HT6	94½"	2400	31	14.1



Profit from the Eagle Advantage®

Item No.: _____
 Project No.: _____
 S.I.S. No.: _____

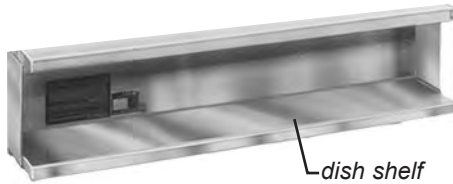
Hot Food Table Accessories



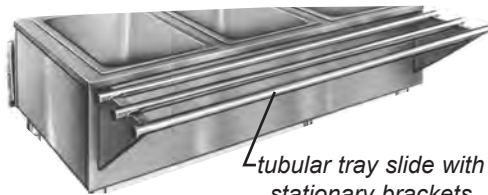
serving shelf



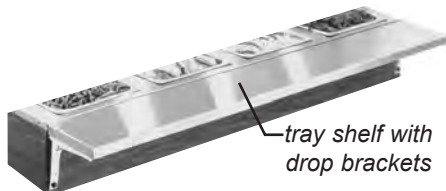
deluxe serving shelf



dish shelf



tubular tray slide with stationary brackets



tray shelf with drop brackets

Serving Shelves

- 18 gauge stainless steel serving shelf.
- Serving height is 13½" (343mm).
- ¼" (6mm) clear Acrylite® front panel or open front available.

...with Open Front		...with Acrylite® Front Panel		length		weight	
10" (254mm) wide	model #	18" (457mm) wide	model #	in.	mm	lbs.	kg
	SS-HT2		SSP-HT2	33"	838	20	9.0
	SS-HT3		SSP-HT3	48"	1219	25	11.3
	SS-HT4		SSP-HT4	63½"	1613	35	15.9
	SS-HT5		SSP-HT5	79"	2007	40	18.1
	SS-HT6		SSP-HT6	94½"	2400	55	24.9

Deluxe Serving Shelves

- 14½" (368mm)-wide, 18 gauge stainless steel serving shelf.
- Front sloped back to allow better view of product.
- ⅜" (5mm)-thick clear polycarbonate front and end panels.

model #	for model	length		weight	
		in.	mm	lbs.	kg
DSSP-HT2	HT2	33"	838	27	12.2
DSSP-HT3	HT3	48"	1219	37	16.8
DSSP-HT4	HT4	63½"	1613	47	21.3
DSSP-HT5	HT5	79"	2007	55	24.9
DSSP-HT6	HT6	94½"	2400	69	31.3

Dish Shelves

- 8" (203mm)-wide, 1¼" (32mm)-thick shelf.
- 18 gauge stainless steel construction.
- Removable without the use of tools.

model #	for model	length		weight	
		in.	mm	lbs.	kg
353985	HT2	33"	838	6	2.7
353986	HT3	48"	1219	7	3.2
353987	HT4	63½"	1613	11	5.0
353988	HT5	79"	2007	14	6.4
355196	HT6	94½"	2400	20	9.0

Tray Slides / Shelves

- Stainless steel stationary brackets or chrome-plated drop brackets.
- Suitable for field mounting.

				Tubular Tray Slides		Solid Tray Shelves	
				10½" (267mm)-wide, three tube-type stainless steel		10" (254mm)-wide, stainless steel shelf.	
				w/Stationary Brackets	w/Drop Brackets	w/Stationary Brackets	w/Drop Brackets
length		weight		model #	model #	model #	model #
in.	mm	lbs.	kg				
33"	838	14	6.3	TSL-HT2	TSL-DB-HT2	TS-HT2	TS-DB-HT2
48"	1219	18	8.2	TSL-HT3	TSL-DB-HT3	TS-HT3	TS-DB-HT3
63½"	1613	21	9.5	TSL-HT4	TSL-DB-HT4	TS-HT4	TS-DB-HT4
79"	2007	24	10.9	TSL-HT5	TSL-DB-HT5	TS-HT5	TS-DB-HT5
94½"	2400	31	14.1	TSL-HT6	TSL-DB-HT6	TS-HT6	TS-DB-HT6

EAGLE GROUP

100 Industrial Boulevard, Clayton, DE 19938-8903 USA

Phone: 302-653-3000 • Fax: 302-653-2065 • www.eaglegrp.com

Foodservice Division: Phone 800-441-8440

MHC/Retail Display Divisions: Phone 800-637-5100

Printed in U.S.A.
 ©2012 by Eagle Group

Rev. 04/12

Spec sheets available for viewing, printing or downloading from our online literature library at www.eaglegrp.com

Although every attempt has been made to ensure the accuracy of the information provided, we cannot be held responsible for typographical or printing errors. Information and specifications are subject to change without notice. Please confirm at time of order.