

D**DIRECT STEAM FULL JACKETED
STATIONARY PEDESTAL KETTLE**

JOB NAME: _____

ITEM NO.: _____

NO. REQUIRED: _____

MODELS

- F-80PF** - 80 gallon (303 liter), direct steam, stationary, fully jacketed, pedestal base kettle

DESCRIPTION

Will be a Market Forge direct connected stationary steam jacketed kettle.

Kettle will be constructed of welded satin finish stainless steel, type 304. A 316 stainless steel liner for high acid content products is standard for 20 gallon kettle. A double wall interior around the kettle will form a full steam jacket. The kettle bottom will be of elliptical design for superior heat circulation.

The pedestal base shall have four 7/16" (11mm) holes evenly spaced for securing unit to the floor. Kettle shall have a hinged flat split stainless steel cover

Unit will include as standard a Steam Control Kit, a hinged cover and a 2" draw-off valve with strainer and a safety relief valve.

OPERATION WILL BE BY

Direct steam at a minimum of 5 PSI (34 KpA) and a maximum of 25 psi (172 kPa) is required.

SHIPPING WEIGHT

- F-80LF** - 380 lbs (172 kg)

**OPTIONS & ACCESSORIES**

(at additional charge)

- Pantry Faucet & Kettle Fillers
 - Single pantry kettle filler
 - Double pantry kettle filler
 - Single pantry faucet with swing spout
 - Double pantry faucet with swing spout
- Strainers
 - Perforated strainer for draw-off valve
 - Solid disc for draw-off valve
 - Strainer hook
- Measuring
 - Etched gallon markings
 - Etched litre markings
 - Graduated measuring strip
- Prison package, s/s plate over tangent draw-off valve, tamper proof screws, chrome plated steam control, lockable s/s spring assist hinged cover, reinforcement bar, step up platform
- Type 316 stainless steel liner for high acid content products (30F through 60F gallon)
- 35 psi (241 kPa) high pressure operation for higher cooking temperature
- 3" (76 mm) draw-off valve
- Triple basket assembly
- Pressure reducing valve
- Draw-off valve hose kit with 8' (2.44m) hose

FOOD SERVICE EQUIPMENT
 Full Jacketed Stationary Pedestal Kettles
**MARKET FORGE**

D

DIRECT STEAM FULL JACKETED STATIONARY PEDESTAL KETTLE

DETAILS & DIMENSIONS

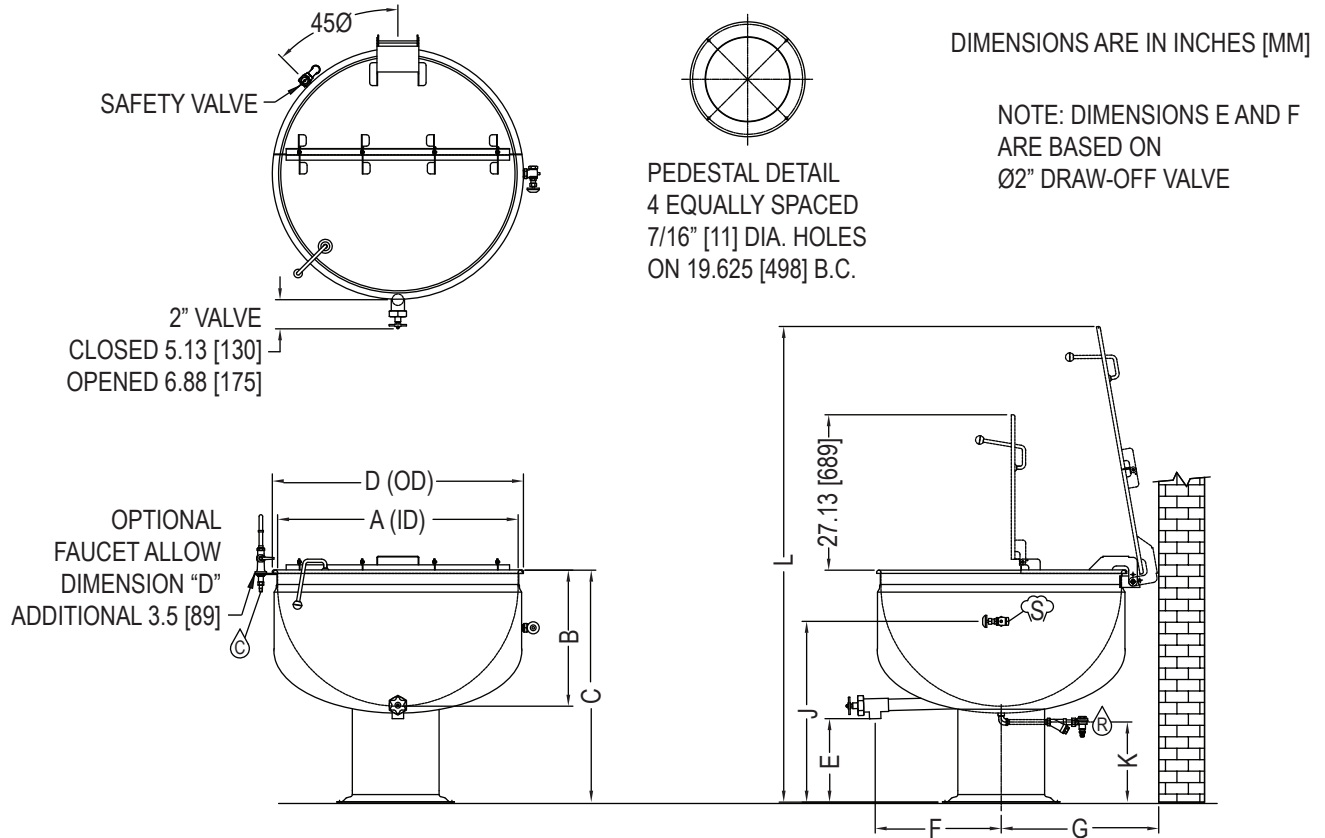
DIMENSIONS

MODEL	A	B	C	D	E	F	G	J	K	L
F-80PF	42 [1067]	23.75 [603]	40.5 [1029]	43.88 [1114]	14.13 [359]	22 [559]	27.5 [699]	35.5 [902]	14 [356]	82.88 [2105]

SERVICE CONNECTIONS

S	Steam Supply - 3/4" (19mm) NPT, 25 PSI max.(35 PSI optional)
C	Cold Water - 3/8" O.D. tubing to kettle fill faucet (optional)
R	Condensate Return - 1/2" (13mm) NPT

FOOD SERVICE EQUIPMENT
 Full Jacketed Stationary Pedestal Kettle



The manufacturer reserves the right to modify materials and specifications without notice.