

D

**TILTING PEDESTAL BASE
DIRECT STEAM KETTLE**

JOB NAME: _____

ITEM NO.: _____

NO. REQUIRED: _____

MODELS

- FT-20P - 20 gallon (76 liter), direct steam, tilting pedestal base
- FT-30P - 30 gallon (114 liter), direct steam, tilting pedestal base
- FT-40P - 40 gallon (152 liter), direct steam, tilting pedestal base
- FT-60P - 60 gallon (227 liter), direct steam, tilting pedestal base
- FT-80P - 80 gallon (303 liter), direct steam, tilting pedestal base

DESCRIPTION

Will be a Market Forge direct steam connected, tilting pedestal steam jacketed kettle constructed of welded satin finish stainless steel, type 304. A double wall kettle interior will form a steam jacket around the lower 2/3 of the kettle. The kettle bottom will be of elliptical design for superior heat circulation. The FT-20, 30 & 40 Gallon Pedestal Tilting Kettles come standard with a 316 type stainless steel inner liner. The FT-60 & 80 Gallon Kettles come standard with a 304 type stainless steel inner liner with the option to upgrade to 316 type stainless steel.

Mounting frame of tubular stainless steel pipe will be formed in a yoke fixed to a cylindrical pedestal base. Pedestal base will have four 7/16" (11mm) holes evenly spaced for securing unit to floor.

Trunnion mounts will support the kettle to allow tilting 90°. Tilting mechanism with high position hand wheel and steam control valve will be mounted on the right side frame member. Gearbox housing and hand wheel will be of stainless steel. Operation will be self-locking for positive stop action.

Unit will include as standard a steam control kit (STA-2), which includes a Steam Trap, Check Valve, and a Line Strainer.

OPERATION WILL BE BY

Direct steam source at a minimum of 5 PSI (34kPa) and a maximum of 30 PSI (241kPa). Kettles are built as standard with a MAWP of 35 PSI.

STEAM FLOW REQUIREMENTS

34 lbs. (15.5 kg) steam pre hour or 1 BHP per 20 gallons (76 liters) pf kettle capacity.

MODEL	BHP/HR	LBS STEAM/HR
FT-20P	1.0	34.5
FT-30P	1.5	52.0
FT-40P	2.0	69.0
FT-60P	3.0	103.5
FT-80P	4.0	138.0

SHIPPING WEIGHT

- FT-20P - 225 lbs (102 kg)
- FT-30P - 275 lbs (125 kg)
- FT-40P - 300 lbs (136 kg)
- FT-60P - 315 lbs (143 kg)
- FT-80P - 325 lbs (147 kg)



FT-40P shown

OPTIONS & ACCESSORIES

(at additional charge)

- **Covers**
 - One-piece lift-off stainless steel cover
 - One-piece spring assist hinged stainless steel cover
- **Pantry Faucets**
 - 12" double pantry faucet w/swing spout & bracket
 - 12" single pantry faucet w/swing spout & bracket
 - 18" double pantry faucet w/swing spout & bracket
 - 18" single pantry faucet w/swing spout & bracket
 - Double kettle filler
 - Single kettle filler
 - Double faucet spray hose kit w/bracket & plumbing
 - 60" water hose with quick disconnect
 - Faucet bracket
- **Draw-off Valves**
 - 2" (50mm) draw-off valve with strainer
 - 3" (76mm) draw-off valve with strainer
- Tri-basket strainer
- Etched Gallon Markings
- BFT (Ball Float Trap)
- PRV (Pressure Reducing Valve)
- Pan Support
- Graduated measuring stick
- Wall models (consult factory)
- Type 316 stainless steel liner (for high acid content)
- Prison package includes: s/s plate over tangent draw-off valve, tamper proof screws, chrome plated steam control, lockable s/s spring assist hinged cover, reinforcement bar



D

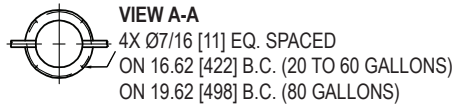
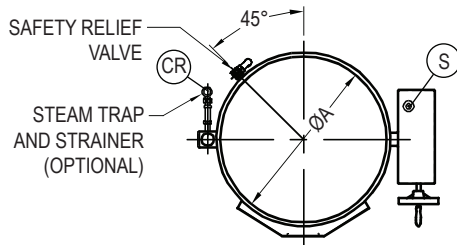
TILTING PEDESTAL BASE DIRECT STEAM KETTLE

DETAILS & DIMENSIONS

DIMENSIONS

MODEL	A	B	C	D	E	F	G	H	J	K	L	M	N (2")	N (3")
FT-20P	21 [533]	18 [457]	37 [940]	34.75 [883]	14.75 [375]	20 [508]	135 [343]	41 [1041]	15.25 [387]	20.5 [521]	59.5 [1151]	17.5 [445]	16.75 [425]	16.25 [413]
FT-30P	24 [610]	20 [508]	37 [940]	37.75 [959]	16.25 [413]	21.5 [546]	14 [356]	43 [1092]	13.25 [337]	20 [508]	62.5 [1587]	17.5 [445]	14.75 [375]	14.25 [362]
FT-40P	26 [660]	22.5 [572]	37 [940]	39.75 [1010]	17.25 [438]	22.5 [572]	15.5 [394]	45 [1143]	10.75 [273]	18.5 [470]	64 [1626]	17.5 [445]	12.25 [311]	11.75 [298]
FT-60P	29.5 [749]	26 [660]	40.5 [1029]	43 [1092]	18.87 [479]	24.13 [613]	17.5 [445]	48 [1219]	10.25 [260]	19.25 [489]	74 [1879]	17.5 [445]	14.25 [362]	13.75 [349]
FT-80P	33 [838]	28 [711]	42.5 [1080]	46.5 [1181]	20.63 [524]	25.88 [657]	19 [483]	52 [1067]	9.75 [248]	20.5 [521]	76 [1930]	20.5 [521]	12.25 [311]	11.75 [298]

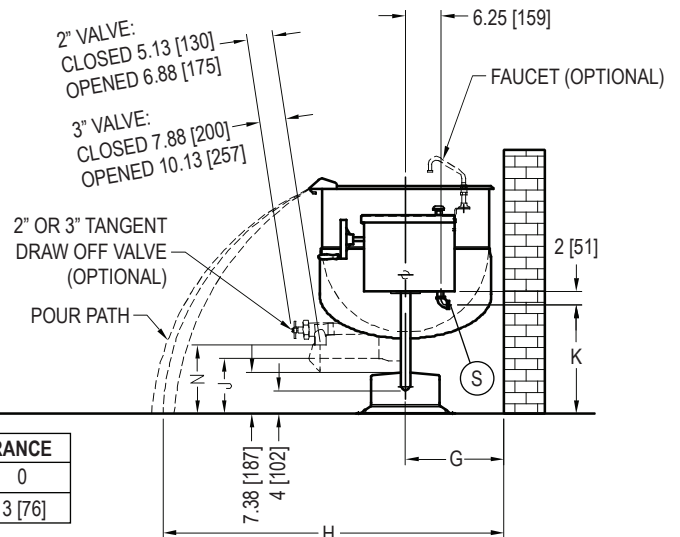
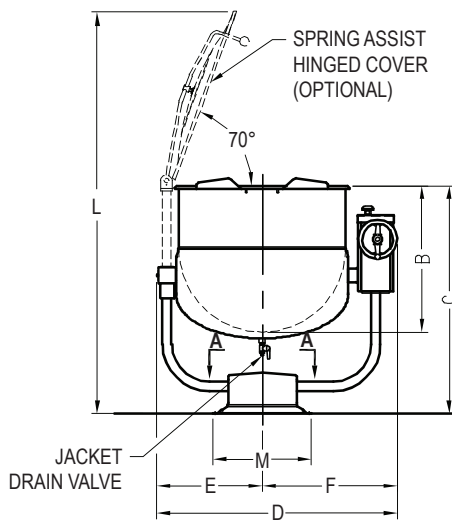
DIMENSIONS ARE IN INCHES [MM]



SERVICE CONNECTIONS

S	Steam Supply - 3/4" NPS (19mm) at 5-30 PSI (0.3-2.1 kg/cm ²). Optional 5-45 PSI (0.3-3.1 kg/cm ²).*
CW	Cold Water - 5/8" O.D. Tubing (Optional)
HW	Hot Water - 5/8" O.D. Tubing (Optional)
CR	Condensate Return - 1/2" NPS (13mm)†

* Pressure reducing valve is required if incoming pressure exceeds rating at kettle.



MIN. CLEARANCE	
SIDES	0
BACK	3 [76]

The manufacturer reserves the right to modify materials and specifications without notice.

FOOD SERVICE EQUIPMENT
Tilting Pedestal Kettle