

# E

## ELECTRICALLY OPERATED STEAM BOILER

JOB NAME: \_\_\_\_\_  
 ITEM NO.: \_\_\_\_\_  
 NO. REQUIRED: \_\_\_\_\_

- MODELS:**
- |                                  |                                  |
|----------------------------------|----------------------------------|
| <input type="checkbox"/> M24E24A | <input type="checkbox"/> M36E24A |
| <input type="checkbox"/> M24E36A | <input type="checkbox"/> M36E36A |
| <input type="checkbox"/> M24E42A | <input type="checkbox"/> M36E42A |
| <input type="checkbox"/> M24E48A | <input type="checkbox"/> M36E48A |

### DESCRIPTION:

The Market Forge CSD-1 compliant electrically operated steam boiler is mounted in a polished stainless steel cabinet base of modular design to match other Market Forge cooking equipment. Equipped with 6" (152mm) stainless steel legs, adjustable bullet feet, reinforced stainless steel counter top and single lift off front panel. No connection or piping extends beyond either end of the cabinet, and all piping is enclosed. Frame construction is 8 gauge stainless steel, type 409.



M24E42A



M36E24A

MODEL	WIDTH	KW	MODEL	WIDTH
M24E24A	24" (610mm)	24	M36E24A	36" (914mm)
M24E36A	24" (610mm)	36	M36E36A	36" (914mm)
M24E42A	24" (610mm)	42	M36E42A	36" (914mm)
M24E48A	24" (610mm)	48	M36E48A	36" (914mm)

Unit is automatically filled with cold water and brought to pressure when the power and heat switches are turned on and automatically drained, under pressure, when the power switch is turned off. Cold water drained under pressure shall automatically exhaust steam before releasing it to the drain.

Boiler has manual drain capability as standard. Access port for Total Concept and PM Plus delimer, descaler and corrosion inhibitor and a single check valve to the boiler feed are included.

**Note:** Boiler is suitable for operation at any pressure from 5-15 PSI (0.4 kg/cm<sup>2</sup>). If two operating pressures are required, such as 5 PSI to one unit and 15 PSI to another specify pressure reducing valve to provide 5 PSI (0.4 kg/cm<sup>2</sup>) operation.

The only available space to supply utilities to the boiler is the 6" (152mm) space between the floor and the cabinet.

### OPERATION SHALL BE BY:

Electrically powered, A.S.M.E. constructed and National Board Registered, MAWP 15 PSI (1kg/cm<sup>2</sup>) boiler equipped for operation with:

- |                                    |                               |                              |                               |
|------------------------------------|-------------------------------|------------------------------|-------------------------------|
| <input type="checkbox"/> 24kW, 3ph | <input type="checkbox"/> 208V | <input type="checkbox"/> 240 | <input type="checkbox"/> 480V |
| <input type="checkbox"/> 36kW, 3ph | <input type="checkbox"/> 208V | <input type="checkbox"/> 240 | <input type="checkbox"/> 480V |
| <input type="checkbox"/> 42kW, 3ph | <input type="checkbox"/> 208V |                              |                               |
| <input type="checkbox"/> 48kW, 3ph |                               | <input type="checkbox"/> 240 | <input type="checkbox"/> 480V |

### STANDARD FEATURES:

- CSD-1 Compliant.
- Pressure Gauge.
- Cold Water Condenser.
- Water Strainer.
- Automatic Water Level Control.
- Air Vent.
- One Power Supply.
- Low Water Cut-off.
- Water Gauge Glass.
- Operating and High Limit Pressure Controls.
- Safety Relief Valve and Cathodic Descaler.
- Boiler is Insulated as Standard.
- Totally Serviceable from the Front.

### OPTIONAL AT EXTRA COST:

- Casters.
- KleenSteam Filter System.
- Flanged Feet.
- Prison Package (Consult Factory).
- Twin Check Valve.
- Steam Take-Off Kit.
- Pressure Reducing Valve.
- Total Concept Delimer- case of 4 or (1) 1-gallon bottle.
- One case of PM Plus (corrosion inhibitor).

The manufacturer reserves the right to modify materials and specifications without notice.

SPEC SHEET: S-4887A  
05/12

FOOD SERVICE EQUIPMENT  
Electric Boiler



Printed in U.S.A.

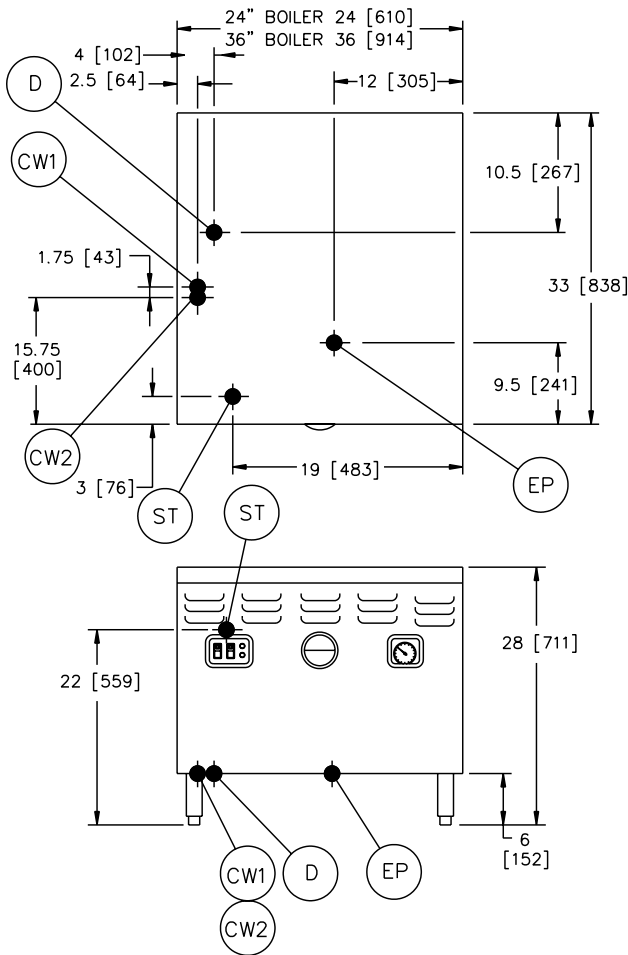
35 Garvey Street • Everett • MA • 02149  
 Tel: (617) 387-4100, (866) 698-3188 • Fax: (800) 227-2659, (617) 387-4456  
 custserv@mfi.com • www.mfi.com

**E****ELECTRICALLY OPERATED  
STEAM BOILER**

JOB NAME: \_\_\_\_\_

ITEM NO.: \_\_\_\_\_

NO. REQUIRED: \_\_\_\_\_

SPEC SHEET: S-4887A  
05/12FOOD SERVICE EQUIPMENT  
Electric Boiler**WARNING:**

**DO NOT UNDER ANY CIRCUMSTANCE  
CONNECT THE EXHAUST DRAIN LINE  
DIRECTLY TO A SEWER LINE.**

**DRAIN LINE INSTALLATION:** The drain port of the unit is marked with a colored tag and is located at the lower rear left side of the boiler as viewed from the front. This exhaust line may be left open if the boiler has to be situated in a tiled floor depression or a tiled curb section that is equipped with drain facilities. If this is not the case, then a 2" (51mm) NPT drain line must be connected to divert the exhaust to the floor drain. If it is necessary to use more than three elbows, increase the size of the waste line accordingly.

It is our policy to build equipment which is design certified by N.S.F., N.E.M.A. and C.S.A. However, a continuing program of product improvement makes it necessary to submit new models to the agencies as they are developed and consequently not all models bear the appropriate agency labels.

**SERVICE CONNECTIONS****Electrically Operated:**

EP	Power Supply - Use wire suitable for at least 90°C. Nominal amp per line wire:				
	Volts	24kW	36kW	42kW	48kW
		3pH	3pH	3pH	3pH
	208 (197-219)	66	100	117	--
	240 (220-240)	60	91	--	116
	480 (360-500)	32	47	--	58
	Details of other electrical systems available upon request.				
CW1	Cold Water - 3/8" (10mm) NPT for cold water to boiler. Cold water lines will have a maximum of 50 PSI (3.5kg/cw <sup>2</sup> ) and a minimum of 25 PSI (1.8 kg/cw <sup>2</sup> ) water pressure (Water may be filtered).				
CW2	Cold Water - 3/8" (10mm) NPT for cold water to condenser. Cold water lines will have a maximum of 50 PSI (3.5kg/cw <sup>2</sup> ) and a minimum of 25 PSI (1.8 kg/cw <sup>2</sup> ) water pressure.				
D	Drain - Pipe full 2" (50mm) I.P.S. to flush floor drain capable of receiving water flowing at a maximum rate of 5 gallons (19 liters) per minute. <b>DO NOT MAKE SOLID CONNECTION TO FLOOR DRAIN.</b>				
ST	Steam Take-off - Connection for operation of adjacent steam powered equipment.				

**Notes:** If equipment is installed where elevation exceeds 2,000 feet (609.6 meters) above sea level, specify installation altitude so that proper gas orifices can be provided.

The only available space to supply utilities to the gas boiler is the 6" (152mm) space between the floor and the cabinet.

Allow 3" (76mm) space from side wall and 6" (152mm) from rear wall if adjoining walls are combustible.

PVC & CPVC PIPE ARE NOT ACCEPTABLE MATERIALS FOR DRAINS.

**CAUTION:** Before connecting water to this unit, water supply should be analyzed to make sure hardness is no greater than 2.0 grains and pH level is within the range of 7.0-8.5. Water which fails to meet these standards should be treated by installation of water conditioner. **EQUIPMENT FAILURE CAUSED BY INADEQUATE WATER QUALITY IS NOT COVERED UNDER WARRANTY.**

**mf** **MARKET FORGE**  
INDUSTRIES INC.  
An Employee Owned Company  
"The Premier Steam Cooking Equipment Manufacturer"

**AutoQuotes**

35 Garvey Street • Everett • MA • 02149  
Tel: (617) 387-4100, (866) 698-3188 • Fax: (800) 227-2659, (617) 387-4456  
custserv@mfi.com • www.mfi.com