

G**24" RANGE
PREMIER SERIES**JOB NAME _____
ITEM NO. _____
NO. REQUIRED _____**MODEL:** MF-R4**SIZE:** 56 5/8" High x 24" Wide x 29 5/8" Front-to-Back
1438mm High x 610mm Wide x 752mm Front-to-Back

The Market Forge MF-R4 Range Series provides as standard many of the optional upgrades normally offered at a premium on other Range lines. Standard includes a stainless steel front, ledge, sides, backguard and shelf. T51 welds the stainless steel seams and edges so the Range looks as good as it performs.

The MF-R4 offers as standard, features that are first in the industry and innovations, such as:

- Chrome plated rack with support rack guides allowing up to four rack positions.
- Exclusive double-venting beneath stainless steel high back shelf to reduce heat build-up.
- New "No Burn-Zone" to reduce burn stains on stainless steel back.
- 6" stainless steel ledge for more usable working area.
- Largest restaurant range oven capacity; 20" x 15" x 26 1/2".
- Standard 35,000 BTU anti-clogging burner or 40,000 BTU on request, both with built-on pilot shield.
- Exclusive double-wall oven flame spreader with temperature diverters to increase even distribution of heat.

STANDARD FEATURES

- Stainless steel front, ledge, sides, backguard and shelf.
- 35,000 or 40,000 BTU lift-off burner heads for high performance cooking and easy cleaning.
- 12" x 12" heavy duty cast iron section grates remove easily and safely. Cast-in bowl directs heat to the cooking surface.
- Grate design allows pots to slide from section to section.
- 6" wide stainless steel landing ledge provides a functional working area.
- 20" wide oven is porcelainized on five contact surfaces for easy cleaning.
- Unique burner baffle distributes heat flow evenly throughout the 40,000 BTU oven.
- Oven door is removable for easy access.
- One year parts and labor warranty.

*MF-R4 On Optional Casters***OVEN SPECIFICATIONS**

Construction: 12 gauge construction with welded front frame. Fully insulated with non-sag fiberglass. Porcelainized oven interior includes: sides, rear, deck and door linings. Oven burner provides 40,000 BTU/hr. Equipped with one heavy-duty locking chrome plated rack.

Controls: Thermostat adjustable from 150°F to 500°F. 100% safety pilot with matchless, push button ignition.

Dimensions: 20" wide x 26 1/2" deep x 15" high.

OPTIONAL ITEMS: Extra chrome rack; reinforcement channels for mounting cheese melter/ salamander; thermostatic controls for griddles; grooved griddles; stainless steel stub backs; and casters.

The manufacturer reserves the right to modify materials and specifications without notice.

Spec No. S-4784
06/03FOOD SERVICE EQUIPMENT
Premier Series Range

MARKET FORGE
INDUSTRIES INC.
An Employee Owned Company

35 Garvey Street, Everett, MA 02149

Tel. (617) 387-4100, Facsimile: 617-387-4456 • 800-227-2659 (outside MA)
E-Mail: CUSTSERV@mfii.com • Website: www.mfii.com

DETAILS & DIMENSIONS

24" RANGE PREMIER SERIES

G

Gas: Manifold pressure is 5.0" W.C. for natural gas or 10.0" for propane gas. Manifold size is 3/4" NPT. 3/4" pressure regulator supplied with equipment to be installed at time of connection. Specify type of gas and elevation if over 2000 ft.

Clearance: For use only on non-combustible floors. Legs or casters are required for non combustibile floors; or 2" over-hang is required when curb mounted. Provide 0" clearance from non-combustible surfaces and 4" from back and 10" from sides, from combustible surfaces.

STANDARD EXTERIOR FINISH

Stainless Steel: Front oven door, sides, landing ledge, back guard with shelf, control panel and kick plate. Welded and finished stainless steel seams.

Control Knobs: Cool to the touch knobs.

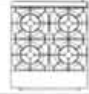
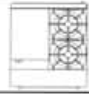

Legs: Chrome plated 6" legs with adjustable feet.

Top Grates: 12" x 12" lift-off sections, heavy duty cast iron. Cast-in bowl directs heat.

Griddles: Highly polished 3/4" plate with 3" wide grease trough. 20,000 BTU/hr burner for every 12" of griddle surface. Located on left side of range top. Manual controls are standard, thermostatic controls optional.

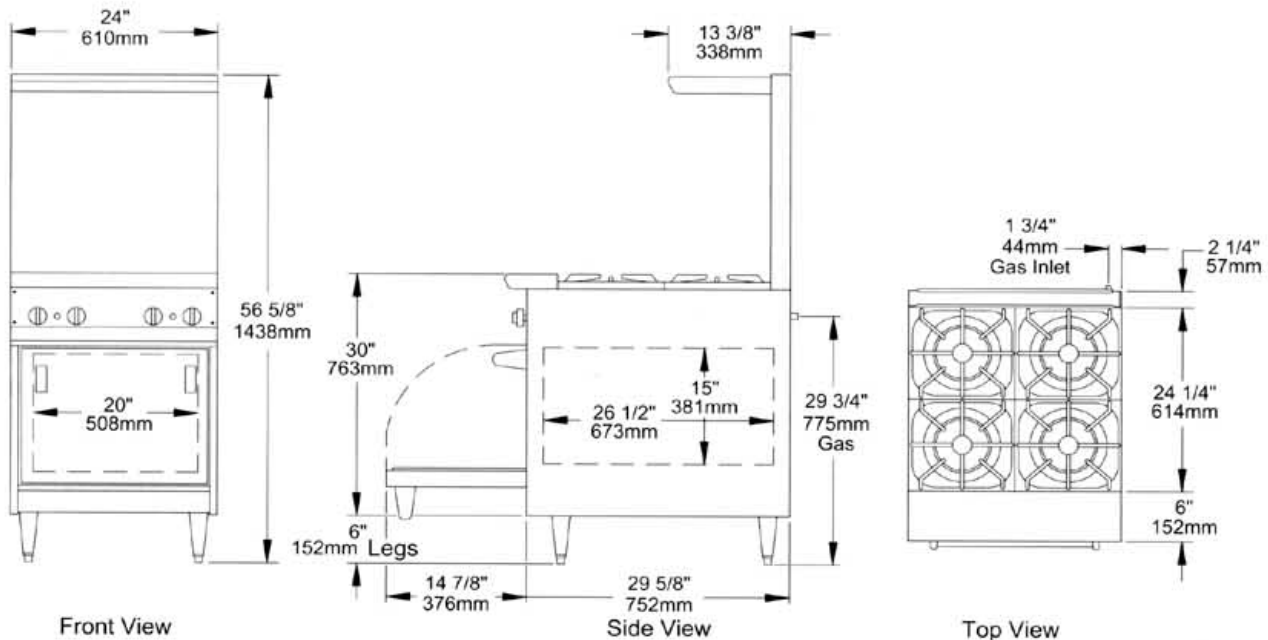
RANGETOPS

Open Burners: 35,000 or 40,000 BTU/hr. , lift-off burner heads. No gaskets, no screws. One standing pilot for each burner. Removable one piece drip tray.

Top Configuration	Model Number	Top	Base	Total BTU	Ship Weight (lbs)
	MF-R4 (Standard)	(4) Burners	20" Oven Base	170,000	480
	Option 1	12" Griddle (2) Burners	20" Oven Base	120,000	485
	Option 2	24" Griddle No Burners	20" Oven Base	70,000	500

Spec No. S-4784
06/03

FOODSERVICEEQUIPMENT
Premier Series Range



ETL Certified. AGA and NSF Standards.



PRINTED IN U.S.A.



MARKET FORGE
INDUSTRIES INC.
An Employee Owned Company

35 Garvey Street, Everett, MA 02149

Tel. (617) 387-4100, Facsimile: 617-387-4456 • 800-227-2659 (outside MA)

E-Mail: CUSTSERV@mfii.com • Website: www.mfii.com